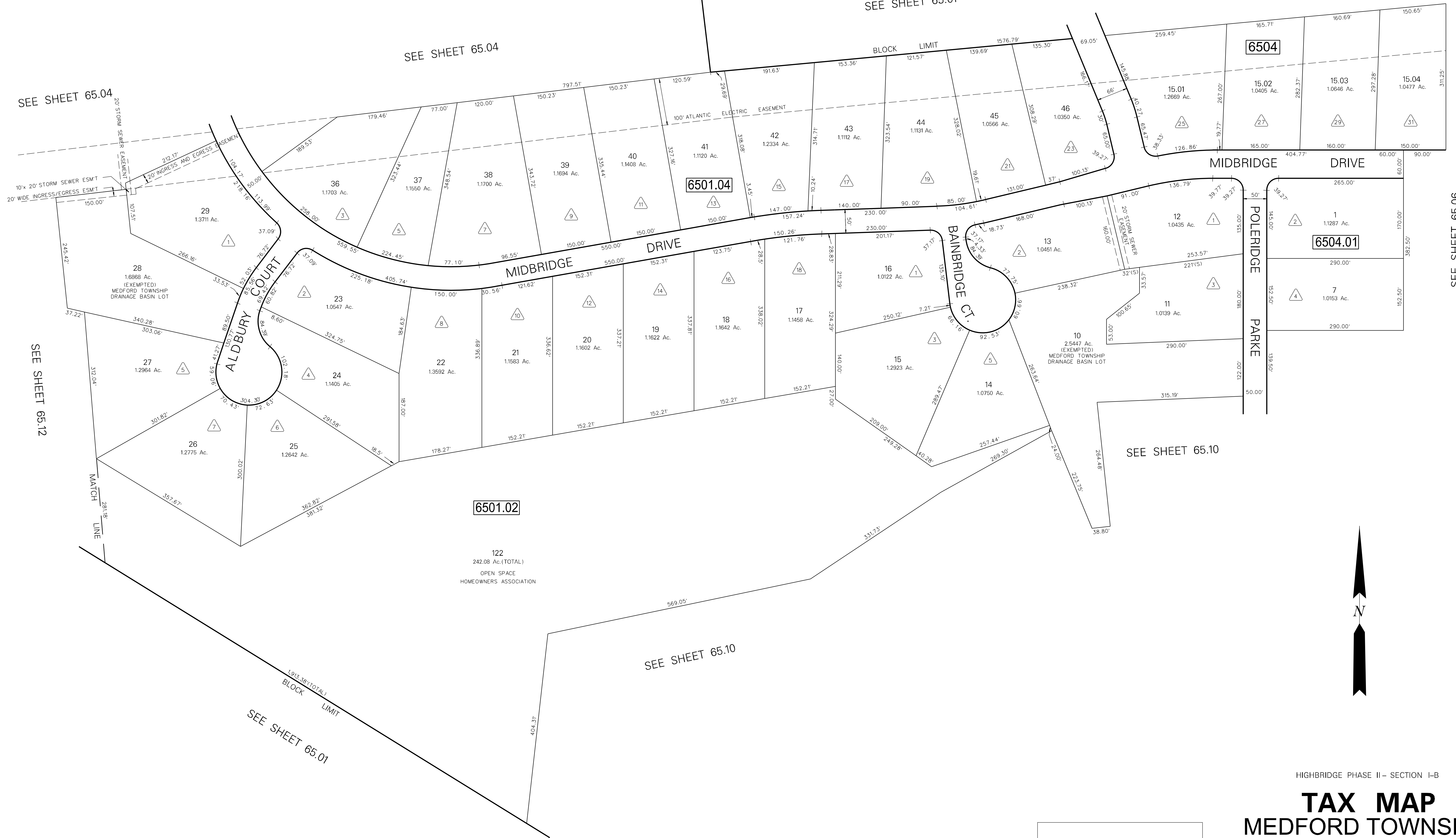


SEE SHEET 65.01

SEE SHEET 65.01

SEE SHEET 65.04

SEE SHEET 65.04



SEE SHEET 65.06

SEE SHEET 65.10

SEE SHEET 65.10

SEE SHEET 65.01

HIGHBRIDGE PHASE II - SECTION I-B

TAX MAP MEDFORD TOWNSHIP

BURLINGTON COUNTY, NEW JERSEY
SCALE: 1"=100' DATE: JAN., 1990

JOHN T. BUTLER
LICENSED LAND SURVEYOR No. 23938
ENVIRONMENTAL RESOLUTIONS, INC.
124 GAITHER DRIVE, SUITE 160, MT. LAUREL, NEW JERSEY

THIS SHEET WAS FORMALLY APPROVED ON MARCH 12, 1985
BY IVAN HAFTHOWITZ AND ASSIGNED SERIAL NUMBER 641

REVISION	DATE
11-12-01	REVISED LOT 122 OF BLOCK 6501.02
4-15-98	DIGITIZED TAX MAP 65.09

98 DENOTES HOUSE NUMBER

NOTE:
ALL ACREAGE GIVEN ON THIS MAP
DOES NOT INCLUDE ROAD AREAS.

NOTE:
THIS SHEET IS A DIGITIZED COPY OF THE TAX MAP ORIGINALLY PREPARED
BY JOHN T. BUTLER, DATE: JAN. 1990. THE ORIGINAL APPROVED MAP IS ON
FILE IN THE OFFICE OF THE TOWNSHIP ENGINEER.