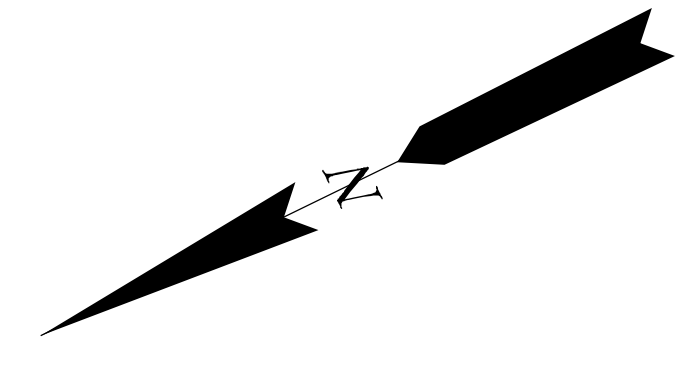


TAX MAP MEDFORD TOWNSHIP

BURLINGTON COUNTY, NEW JERSEY
SCALE: 1"=100' DATE: JAN., 1990

JOHN T. BUTLER
LICENSED LAND SURVEYOR No. 23938
ENVIRONMENTAL RESOLUTIONS, INC.
124 GAITHER DRIVE, SUITE 160, MT. LAUREL, NEW JERSEY

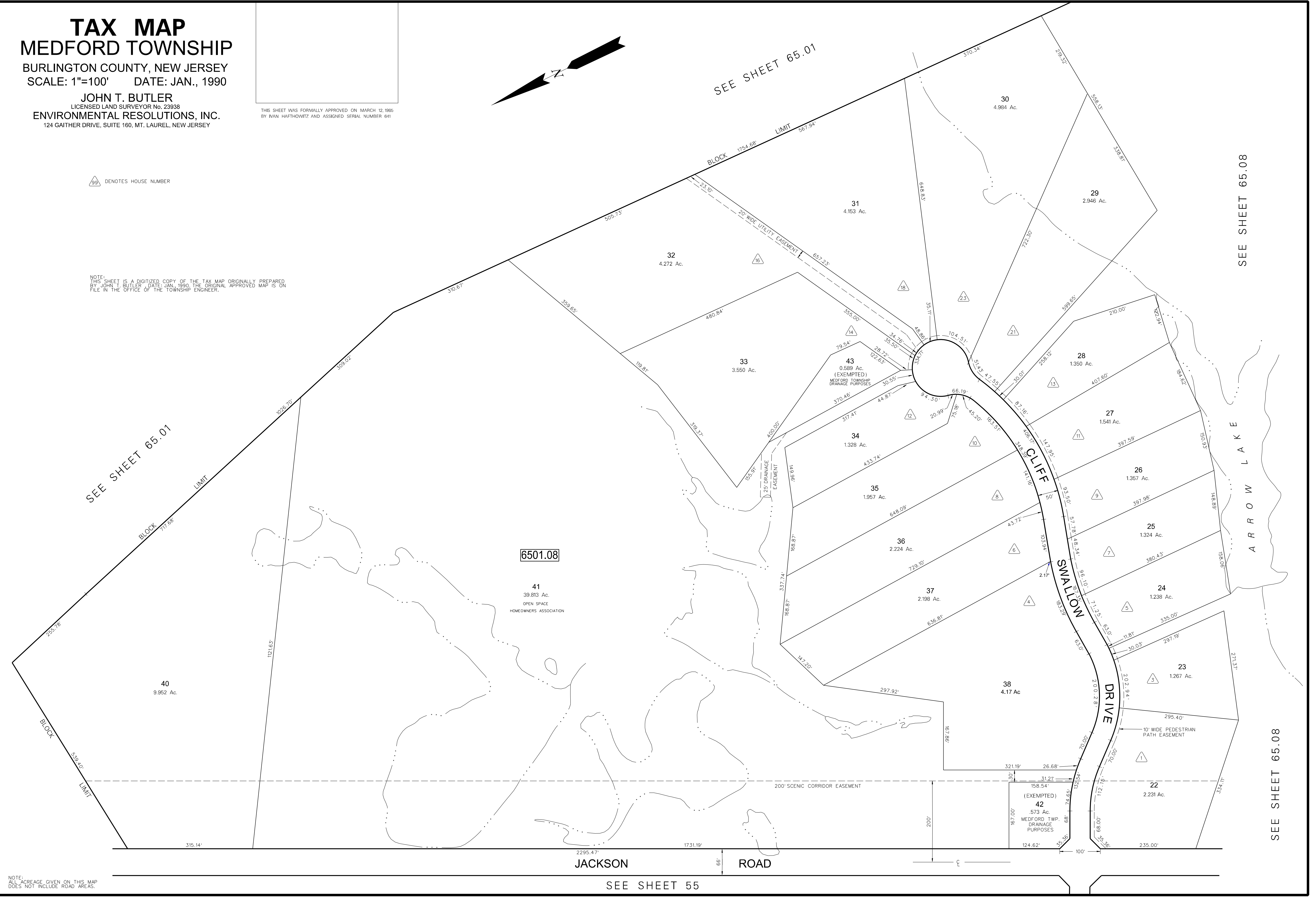
THIS SHEET WAS FORMALLY APPROVED ON MARCH 12, 1986
BY IVAN HAFTHOWITZ AND ASSIGNED SERIAL NUMBER 641



△ DENOTES HOUSE NUMBER

NOTE:
THIS SHEET IS A DIGITIZED COPY OF THE TAX MAP ORIGINALLY PREPARED
BY JOHN T. BUTLER, DATE: JAN., 1990. THE ORIGINAL APPROVED MAP IS ON
FILE IN THE OFFICE OF THE TOWNSHIP ENGINEER.

DATE	REVISION
12-31-2013	BLOCK 6501.08, CONSOLIDATED LOTS 38 & 39 TO LOT 38
4-15-98	DIGITIZED TAX MAP 65.07



SEE SHEET 55