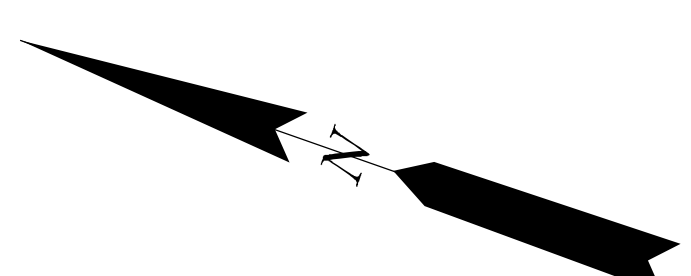
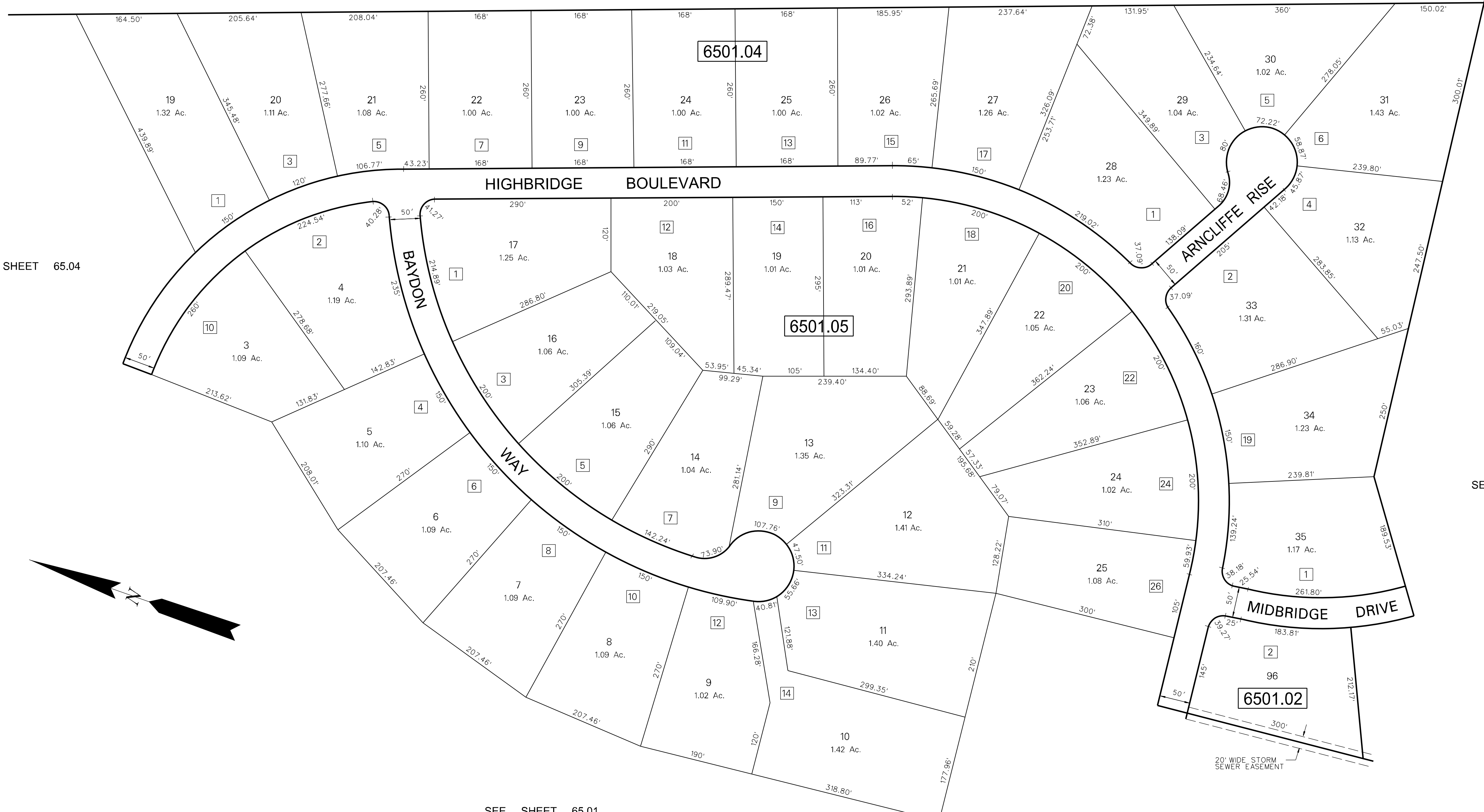


SEE SHEET 65.01

SEE SHEET 65.04

SEE SHEET 65.09

SEE SHEET 65.01



NOTES:

3 DENOTES ADDRESS NUMBER

ALL ACREAGE GIVEN ON THIS MAP DOES NOT INCLUDE ROAD AREAS.

THIS SHEET IS A DIGITIZED COPY OF THE TAX MAP ORIGINALLY PREPARED BY: HARRY O. BATEMAN. THE ORIGINAL IS ON FILE IN THE OFFICE OF THE TOWNSHIP ENGINEER

THIS SHEET WAS FORMALLY APPROVED ON MARCH 12, 1985 BY IVAN HAFTHOWITZ AND ASSIGNED SERIAL NUMBER 641

TAX MAP
MEDFORD TOWNSHIP
 BURLINGTON COUNTY, NEW JERSEY
 SCALE: 1"=100' DATE: NOV. 1987
 HARRY O. BATEMAN TOWNSHIP ENGINEER
 MT. LAUREL, NEW JERSEY

DATE	REVISION
9-25-08	DIGITIZED TAX MAP SHEET 65.04