

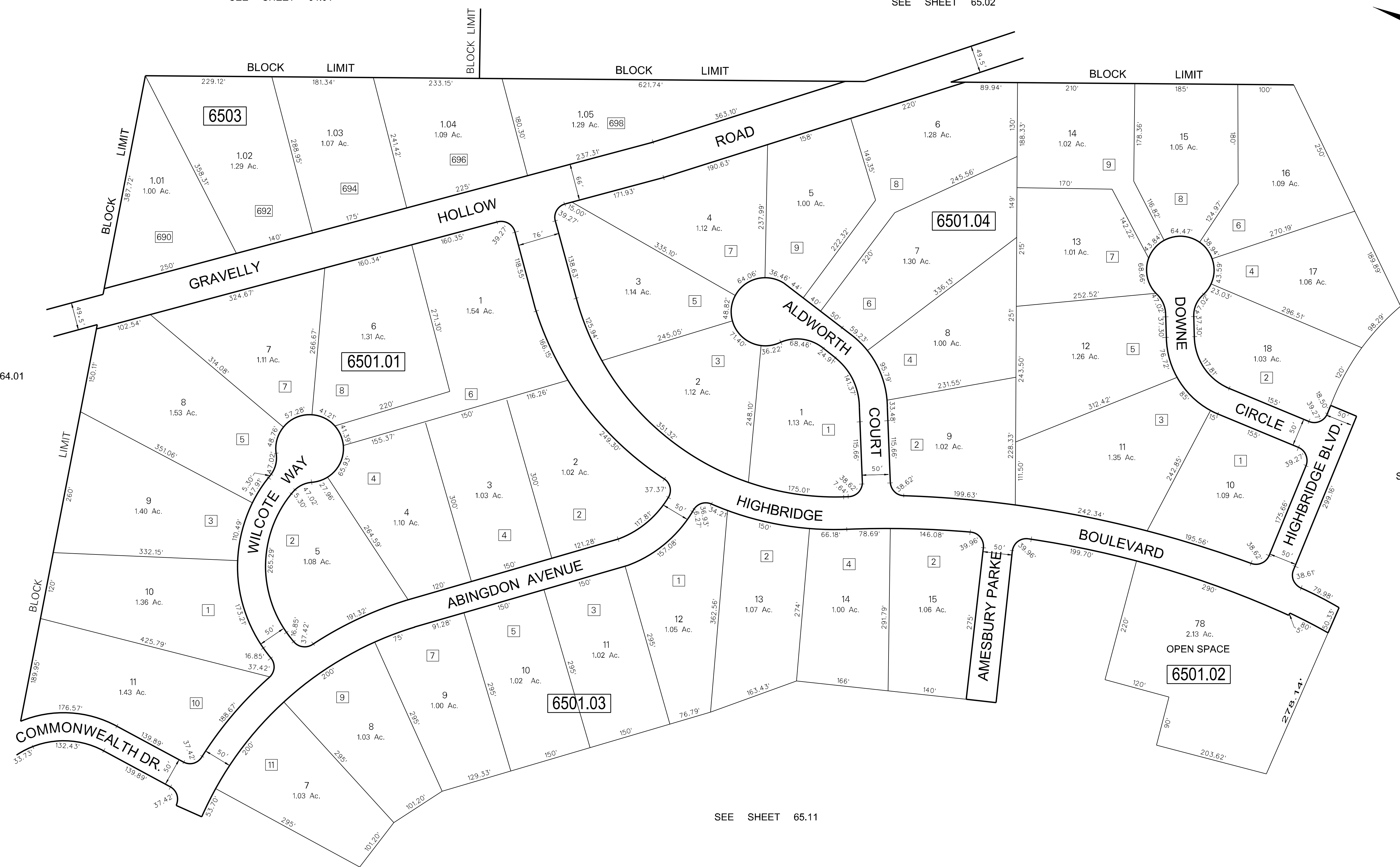
SEE SHEET 64.01

SEE SHEET 65.02

SEE SHEET 64.01

SEE SHEET 65.01

SEE SHEET 65.11



6-11-10	REVISED BLK 6501.04, LOT 6	
9-25-08	DIGITIZED TAX MAP SHEET 65.03	
	REVISION	
	DATE	

NOTES:

30 DENOTES ADDRESS NUMBER

ALL ACREAGE GIVEN ON THIS MAP DOES NOT INCLUDE ROAD AREAS.

THIS SHEET IS A DIGITIZED COPY OF THE TAX MAP ORIGINALLY PREPARED BY: HARRY O. BATEMAN. THE ORIGINAL IS ON FILE IN THE OFFICE OF THE TOWNSHIP ENGINEER

TAX MAP
MEDFORD TOWNSHIP
 BURLINGTON COUNTY, NEW JERSEY
 SCALE: 1"=100' DATE: NOV. 1986
 HARRY O. BATEMAN TOWNSHIP ENGINEER
 MT. LAUREL, NEW JERSEY

THIS SHEET WAS FORMALLY APPROVED ON MARCH 12, 1985 BY IVAN HAFTHOWITZ AND ASSIGNED SERIAL NUMBER 641