

NOTE:
RE: LOT 30 OF BLOCK 6602 & LOT 4.16 OF BLOCK 5507.01
THE OVERLAPPING LINES & DIMENSIONS SHOWN ARE PLOTTED IN
ACCORDANCE WITH THE METES & BOUNDS DESCRIPTIONS APPEARING
IN THE LAST DEED OF RECORD FOR EACH PARCEL & DO NOT PURPORT
TO REPRESENT TITLE OR OWNERSHIP STATUS IN ANY MANNER, THESE
SITUATIONS ARE SUBJECT TO SOLUTION BY THE PROPERTY OWNERS
CONCERNED.



SEE SHEET 55

BLOCK LIMIT

1205.63'(TOTAL)

30
27.14 Ac. ±
(TOTAL)
OPEN SPACE

MATCH LINE

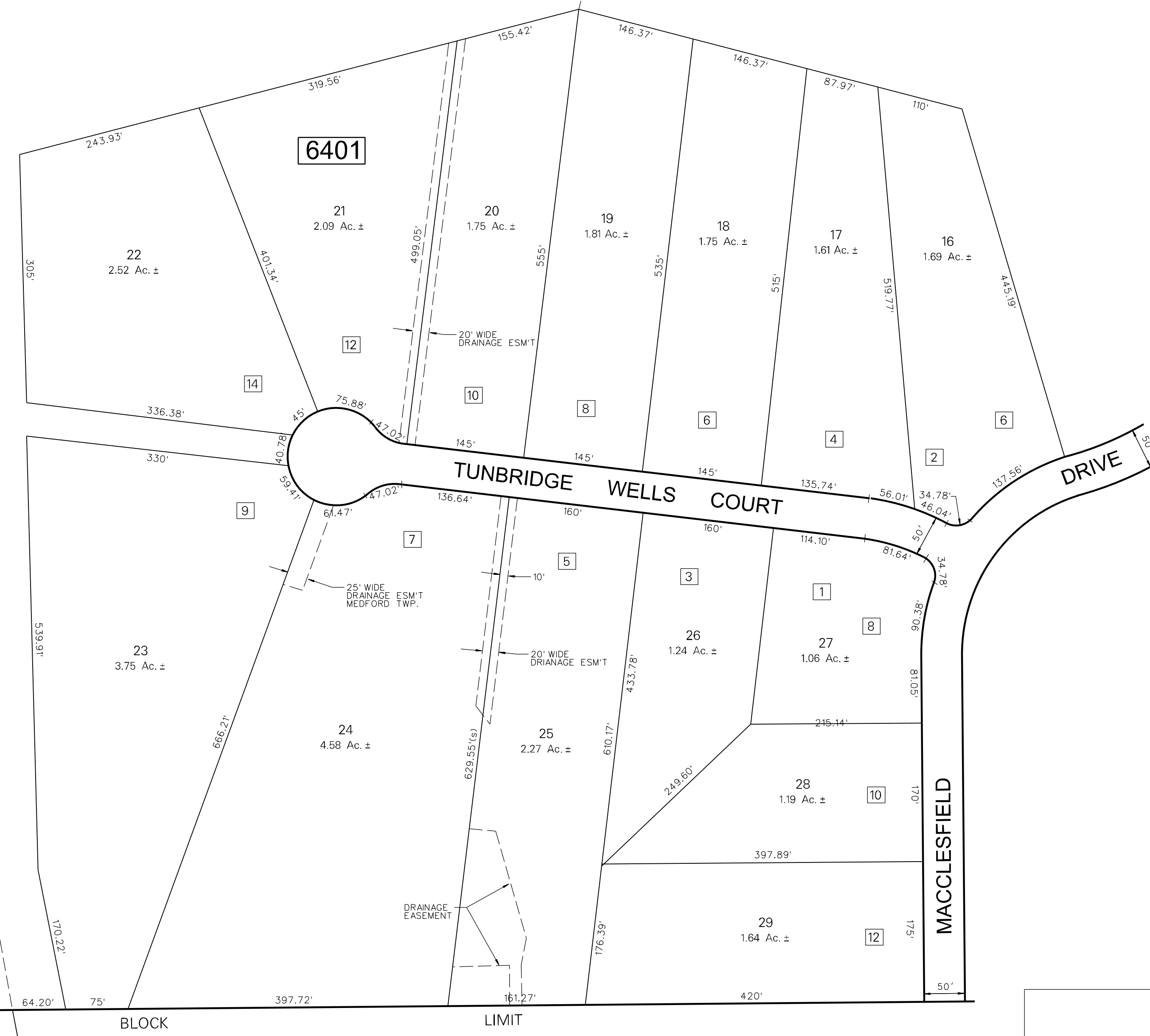
BLOCK

LIMIT

SEE SHEET 55

DEED OVERLAP - SEE NOTE
16.08 Ac. ±

SEE SHEET 64.04



NOTES:

3 DENOTES ADDRESS NUMBER

ALL ACREAGE GIVEN ON THIS MAP
DOES NOT INCLUDE ROAD AREAS.

THIS SHEET IS A DIGITIZED COPY OF THE TAX MAP ORIGINALLY
PREPARED BY: HARRY O. BATEMAN, THE ORIGINAL IS ON FILE IN
THE OFFICE OF THE TOWNSHIP ENGINEER

SEE SHEET 55

SEE SHEET 64.01

THIS SHEET WAS FORMALLY APPROVED ON MARCH 12, 1985
BY IVAN HATHOWITZ AND ASSIGNED SERIAL NUMBER 641

TAX MAP
MEDFORD TOWNSHIP
BURLINGTON COUNTY, NEW JERSEY
SCALE: 1"=100' DATE: OCT. 1985
HARRY O. BATEMAN TOWNSHIP ENGINEER
MT. LAUREL, NEW JERSEY

9-17-08	DATE
1	REVISION
DIGITIZED TAX MAP SHEET 64.06	