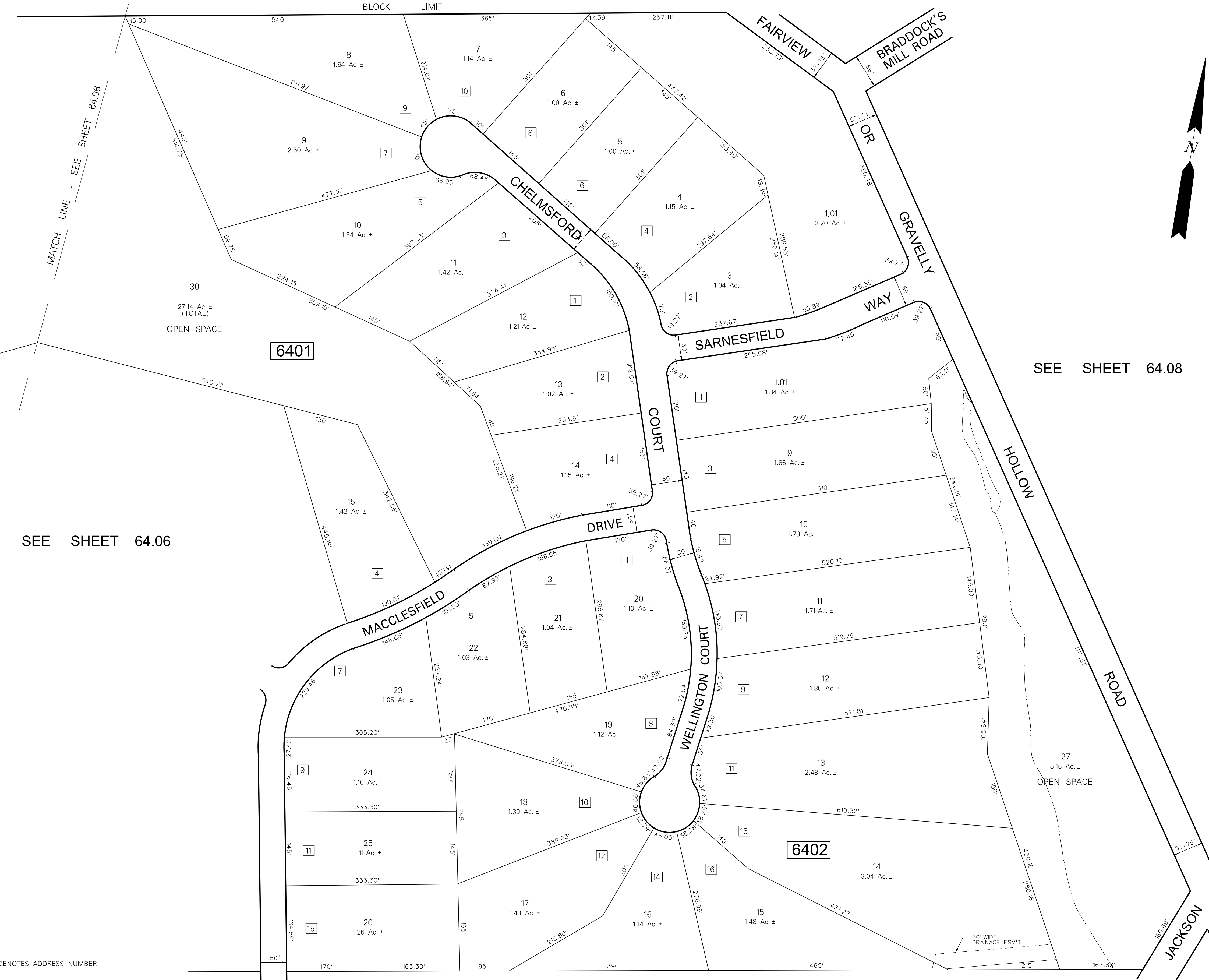


SEE SHEET 32.01



MATCH LINE - SEE SHEET 64.06

SEE SHEET 64.06

SEE SHEET 64.08

SEE SHEET 64.01

THIS SHEET WAS FORMALLY APPROVED ON MARCH 12, 1985
 BY IVAN HAFTHOWITZ AND ASSIGNED SERIAL NUMBER 641

TAX MAP
MEDFORD TOWNSHIP
 BURLINGTON COUNTY, NEW JERSEY
 SCALE: 1"=100' DATE: OCT. 1985
 HARRY O. BATEMAN TOWNSHIP ENGINEER
 MT. LAUREL, NEW JERSEY

9-17-08	DATE
1	REVISION
DIGITIZED TAX MAP SHEET 64.04	

NOTES:
 [3] DENOTES ADDRESS NUMBER
 ALL ACREAGE GIVEN ON THIS MAP DOES NOT INCLUDE ROAD AREAS.
 THIS SHEET IS A DIGITIZED COPY OF THE TAX MAP ORIGINALLY PREPARED BY: HARRY O. BATEMAN, THE ORIGINAL IS ON FILE IN THE OFFICE OF THE TOWNSHIP ENGINEER