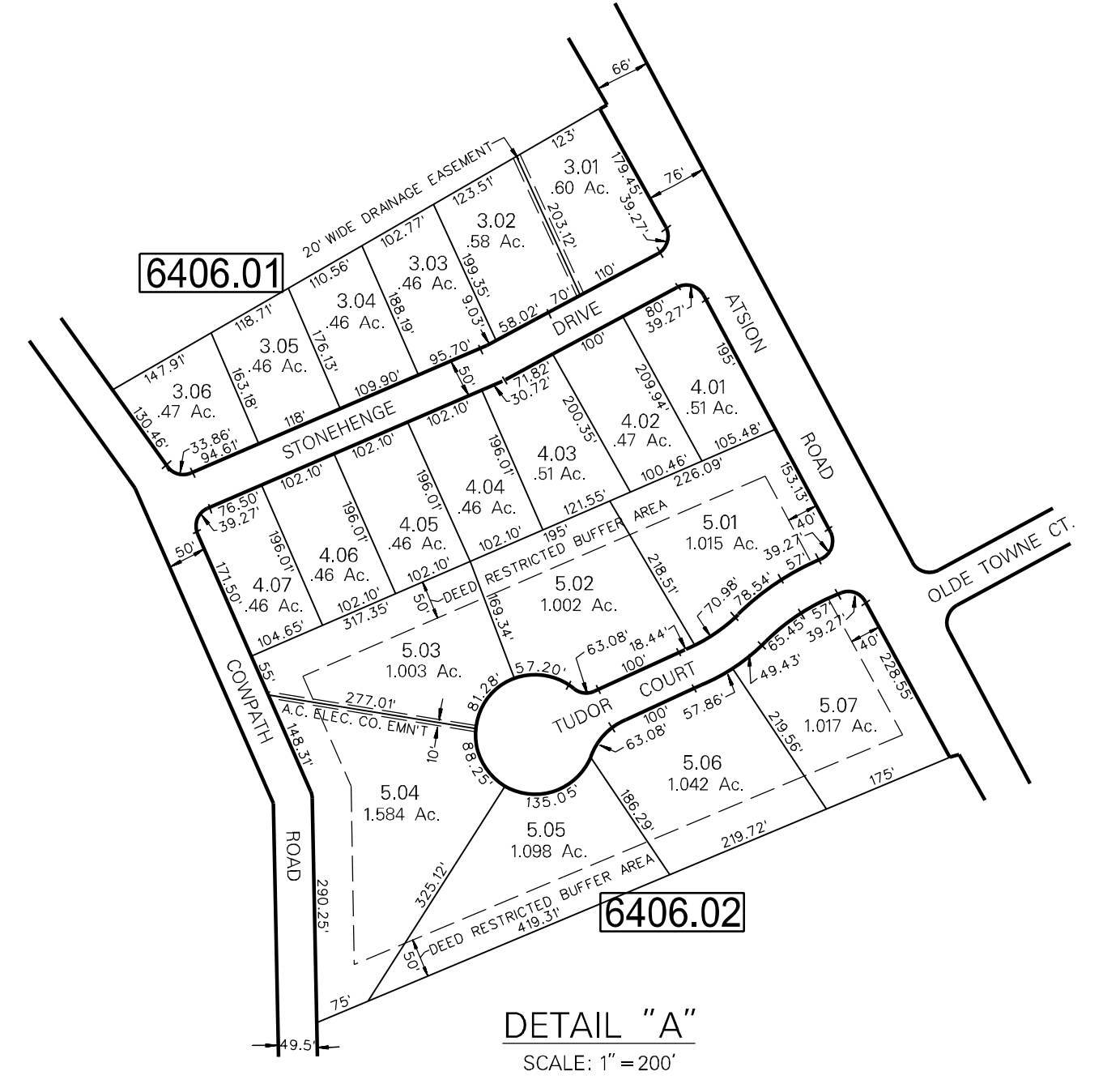


DATE	REVISION
11-4-76	SPLIT-OFF LOTS 3A-3E FROM LOT 3 & LOTS 4A-4F FROM LOT 4, B.LK. 6406; STONEHENGE, VACATED BRIDLE PATH BY ORD.; SEE NOTE
10-29-76	REVISED SIZES OF LOTS 80, B.LK. 6406
10-22-76	SPLIT-OFF LOT 80 FROM LOT 80, B.LK. 6406
2-11-76	REV. LOTS 9, 11, 12, 13 - B.LK. 6405, ACCORDING TO DEEDS
12-10-76	SPLIT-OFF LOT 2A FROM LOT 2, BLOCK 6404
11-6-74	SPLIT-OFF LOT 1A FROM LOT 1, BLOCK 6404
6-12-74	SPLIT-OFF LOT 1B FROM LOT 1, B.LK. 6403
7-9-73	ADDED OVERLAP DUE TO DEEDS, LOT 1, B.LK. 6406
6-19-73	SPLIT-OFF LOTS 6A, 6B, 6C FROM LOT 6, B.LK. 6406
11-22-72	SPLIT-OFF LOT 15A & LOT 15B FROM LOT 15, B.LK. 6406
10-18-72	SPLIT-OFF LOT 15A FROM LOT 15, B.LK. 6406
10-23-71	RD. WIDENED LOT 8, B.LK. 6406, AS REQUIRED BY DEED
DATE	REVISION
1-29-79	SPLIT-OFF LOTS 5A THRU 5F FROM LOT 5 "KINGSWOOD", B.LK. 6406
1-22-79	SPLIT-OFF LOT 1B FROM LOT 8B, B.LK. 6406
8-10-78	SPLIT-OFF LOT 1A FROM LOT 8C, B.LK. 6406
5-17-78	SPLIT-OFF FROM LOTS 10, 11, B.LK. 6405, LOTS 1 & 2, B.LK. 6405A - ADDED ONTO LOT 9, B.LK. 6405
2-21-78	SPLIT-OFF LOT 5A FROM LOT 5, B.LK. 6409
11-29-77	SPLIT-OFF LOTS 2C THRU 2I, B.LK. 6409 FROM LOT 2B, B.LK. 6409 - OLDE TOWNE
10-31-77	ADDED ON TO LOT 10 FROM LOT 8, B.LK. 6405 & REV'D SIZE OF REMAINING P/O LOT 8, B.LK. 6405
6-23-77	SPLIT-OFF LOT 2A FROM LOT 2, B.LK. 6409
6-20-77	SPLIT-OFF LOTS 3A THRU 3D FROM LOT 3, B.LK. 6402
	ADDED ADDITIONAL ACRES TO LOT 2, B.LK. 6402
DATE	REVISION
10-15-05	R.O.W. DEDICATION LOT 5.02 BLOCK 6404
9-05-01	SUBDIVIDED LOT 101 & 102 BLOCK 6406-01
7-13-01	REVISED LOT 15.01 BLOCK 6406-02
2-22-97	R.O.W. REVISED LOT 2.02, B.LK. 6409
2-14-97	DIGITIZED TAX MAP SHEET 64.01
6-6-96	ADDED EASEMENT TO LOT 7, B.LK. 6405-04
3-16-94	RECONFIGURATION LOTS 2, 03, 3, B.LK. 6407
3-2-94	ADDED SHEET 64.10
1-9-93	REVISED LOTS 15.01 & 18, B.LK. 6402-02
1-15-90	ADT. MACLESFIELD DR. & SPIRITUAL, B.LK. 6409
3-15-89	CHANGED WATERBERRY COVE CT. TO COVE LANE
1-8-88	GENERAL REVISIONS, B.LK. 6401, 6402, 6404
12-26-87	SPLIT-OFF LOT 7.01 FROM LOT 7, B.LK. 6404
12-24-87	REVISED B.LK. LIMIT BETWEEN SHT. 32.09 & B.LK. 6403
12-4-87	SUBDIVIDED LOTS 3A INTO 3.02 & REV. LOT 4.02, B.LK. 6404
11-12-86	ADDED WETHERSFIELD SECT. 2 & ADDED SHEET 64.07
	DEL. WELINGTON WOODS - SECT. 3, ADD. SHT. 64.06 - ADD. SECT. 3
DATE	REVISION
12-26-06	ADDED DEED RESTRICTION BUFFER AREA BLOCK 6406
03-28-06	ADDED HOUSE NUMBER LOT 13.01, BLOCK 6406-02
03-14-07	REVISED LOT 2.01 BLOCK 6402
08-17-07	REVISED B.LK. 6405-02, 6405-03 & 6405-04
11-08-07	SUBDIVIDED LOT 12, BLOCK 6406-02 INTO LOTS 12.01 & 12.02
01-17-11	REVISED LOT 4, BLOCK 6407
03-18-15	ADDED LOT NO. TO BLOCK 6406-01, LOT 2.01
01-27-16	SUBDIVIDED B.LK. 6406-02 INTO LOTS 7.01 & 7.02 AND B.LK. 6406-01 INTO LOTS 2.01 & 2.02



NOTES:

BRIDLE PATH BETWEEN ATSON ROAD & OLD GOSHEN ROAD VACATED BY MEDFORD TOWNSHIP ORD. #1976-12, 4-7-76.

LOT NUMBERS 3.01 THRU 3.06, BLOCK 6406-01, 4.01-4.07, BLOCK 6406-02 ARE LOT DESIGNATIONS OF FILED PLAN OF "STONEHENGE."

LOTS 3.01 THRU 3.11, BLOCK 6402 REFER TO FILED PLAN OF "LAUREL KNOLL."

LOT 8, BLOCK 6405 REFER TO FILED PLAN OF MEDFORD OAKS INDUSTRIAL PARK, SEC. 1.

LOTS 2.03 THRU 2.10, BLOCK 6409 REFER TO FILED PLAN OF "OLDE TOWNE."

LOTS 9.02 THRU 9.07, LOTS 10.01 THRU 10.03 & LOT 11, BLOCK 6405-01, LOTS 1 & 2, BLOCK 6405-01 REFER TO FINAL PLAN SEC. MEDFORD OAKS INDUSTRIAL PARK.

LOTS 5.01 THRU 5.07, BLOCK 6406-02 REFER TO FILED PLAN OF "KINGSWOOD."

LOTS 1 THRU 25, BLOCK 6405-02, LOTS 1 THRU 4, BLOCK 6405-03 AND LOTS 1 THRU 7, BLOCK 6405-04 REFER TO FINAL PLAT, "JACKSON WOODS."

LOTS 6.01 THRU 6.08, BLOCK 6406-02 REFER TO FINAL PLAT OF "KINGSWOOD SOUTH."

THIS SHEET WAS FORMALLY APPROVED ON MARCH 12, 1985 BY IAN HAFTHOWITZ AND ASSIGNED SERIAL NUMBER 641

TAX MAP

MEDFORD TOWNSHIP

BURLINGTON COUNTY, NEW JERSEY
 SCALE: 1"=400' DATE: JAN., 1959
 B. HAROLD WILLS TOWNSHIP ENGINEER
 MT. HOLLY, NEW JERSEY

NOTE:
 THIS SHEET IS A DIGITIZED COPY OF THE TAX MAP ORIGINALLY PREPARED BY B. HAROLD WILLS. DATE: JAN. 1959. THE ORIGINAL APPROVED MAP IS ON FILE IN THE OFFICE OF THE TOWNSHIP ENGINEER.

NOTE:
 ALL ACRES GIVEN ON THIS MAP DOES NOT INCLUDE ROAD AREAS.

⊙ - DENOTES HOUSE NUMBERS