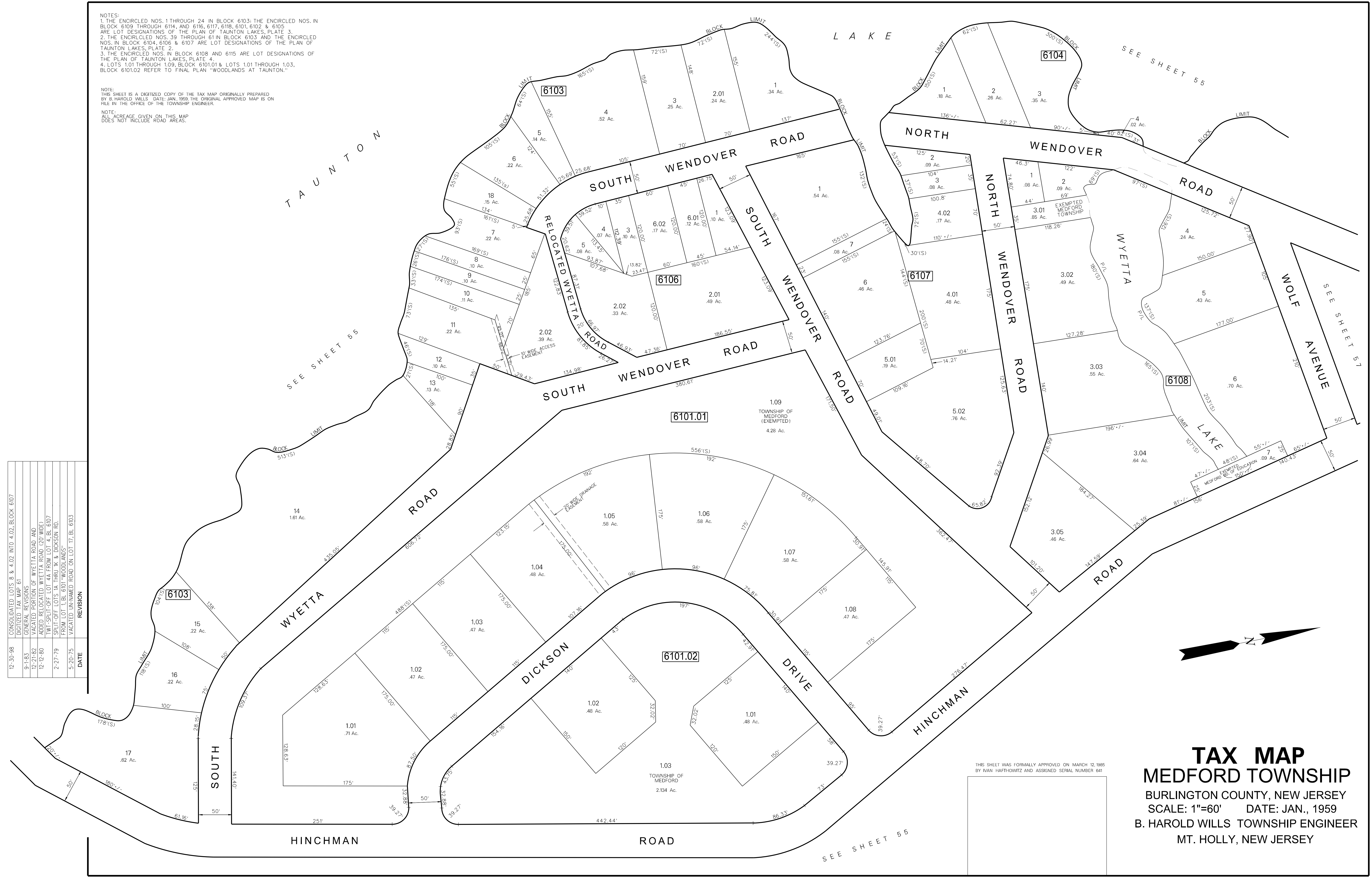


NOTES:
 1. THE ENCIRCLED NOS. 1 THROUGH 24 IN BLOCK 6103; THE ENCIRCLED NOS. IN BLOCK 6109 THROUGH 6114, AND 6116, 6117, 6118, 6101, 6102 & 6105 ARE LOT DESIGNATIONS OF THE PLAN OF TAUNTON LAKES, PLATE 3.
 2. THE ENCIRCLED NOS. 39 THROUGH 61 IN BLOCK 6103; AND THE ENCIRCLED NOS. IN BLOCK 6104, 6106 & 6107 ARE LOT DESIGNATIONS OF THE PLAN OF TAUNTON LAKES, PLATE 2.
 3. THE ENCIRCLED NOS. IN BLOCK 6108 AND 6115 ARE LOT DESIGNATIONS OF THE PLAN OF TAUNTON LAKES, PLATE 4.
 4. LOTS 1.01 THROUGH 1.09, BLOCK 6101.01 & LOTS 1.01 THROUGH 1.03, BLOCK 6101.02 REFER TO FINAL PLAN "WOODLANDS AT TAUNTON."

NOTE:
 THIS SHEET IS A DIGITIZED COPY OF THE TAX MAP ORIGINALLY PREPARED BY B. HAROLD WILLS DATE: JAN. 1959. THE ORIGINAL APPROVED MAP IS ON FILE IN THE OFFICE OF THE TOWNSHIP ENGINEER.

NOTE:
 ALL ACRESAGE GIVEN ON THIS MAP DOES NOT INCLUDE ROAD AREAS.

DATE	REVISION
12-30-98	CONSOLIDATED LOTS 8 & 4.02 INTO 4.02, BLOCK 6107
	DIGITIZED TAX MAP 61
	GENERAL REVISIONS
9-1-83	VACATED PORTION OF WYETTA ROAD AND
12-21-82	ADDED RELOCATED WYETTA ROAD (20' WIDE)
12-12-80	TWT-SPLIT-OFF LOT 4A FROM LOT 4, BL. 6107
2-27-79	SPLIT-OFF LOTS 1A THRU 'K' & DICKSON RD.
	FROM LOT 1, BL. 6101 "WOODLANDS"
5-20-75	VACATED UNNAMED ROAD ON LOT 17, BL. 6103



THIS SHEET WAS FORMALLY APPROVED ON MARCH 12, 1985 BY IVAN HAFTHOWITZ AND ASSIGNED SERIAL NUMBER 641

TAX MAP
MEDFORD TOWNSHIP
 BURLINGTON COUNTY, NEW JERSEY
 SCALE: 1"=60' DATE: JAN., 1959
 B. HAROLD WILLS TOWNSHIP ENGINEER
 MT. HOLLY, NEW JERSEY