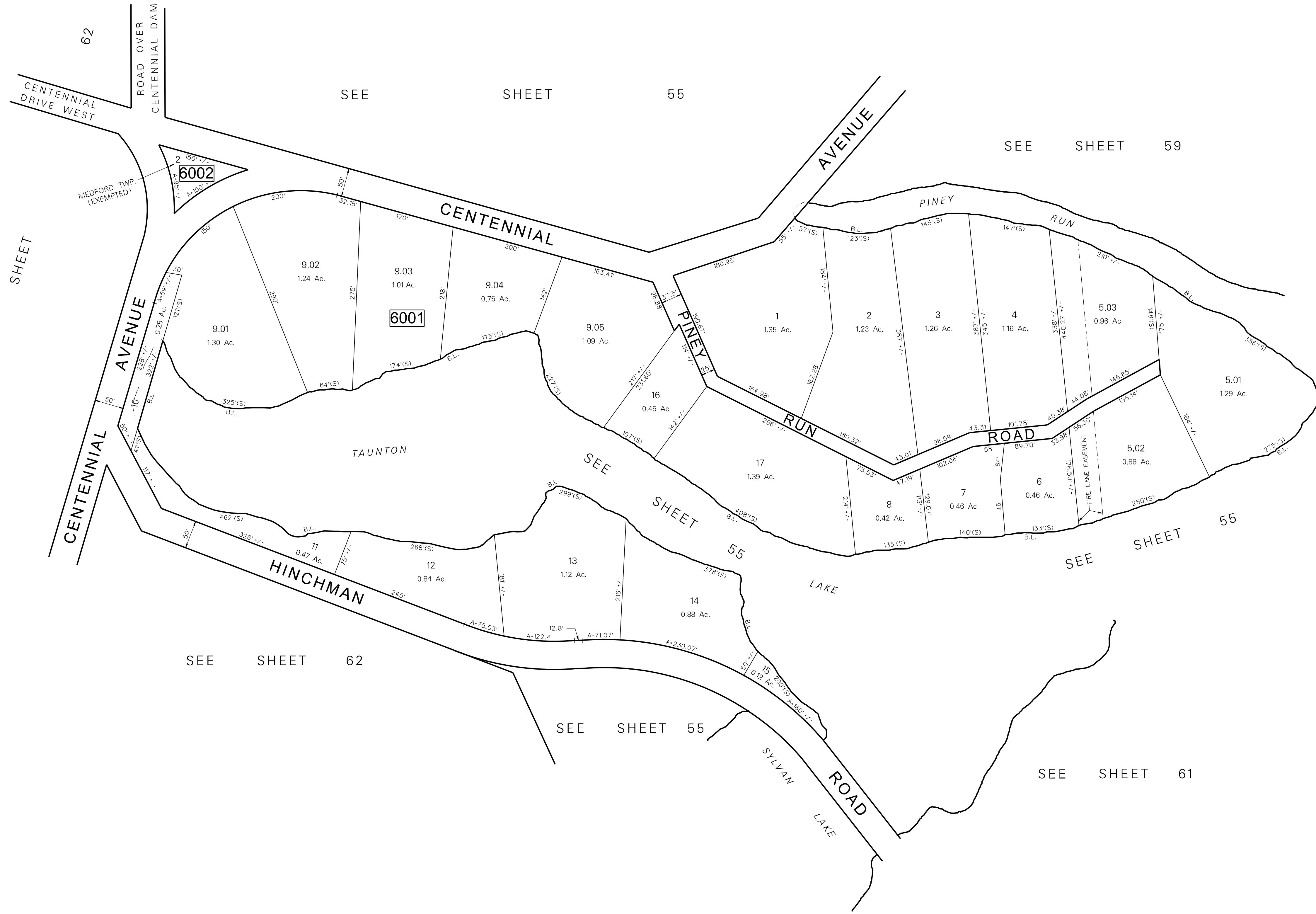


DATE	REVISION
5-22-01	GENERAL REVISIONS TO LOT 13, BLK 6001
5-22-01	DIGITIZED TAX MAP SHEET 60
12-23-87	SUBDIVIDED LOTS 1, 2 & 8, BLOCK 6001
9-1-83	GENERAL REVISION BY T.W.I.
5-20-77	CHANGED ROAD DISTANCES LOT 5B, BLOCK 6001
1-13-77	SPLIT OFF LOT 5B FROM 5, AND EXTENDED PINEY RUN RD., BLK. 6001
11-4-76	SPLIT OFF LOT A FROM LOT 5, BLOCK 6001
2-19-76	ENLARGED LOT 7 AREA & REDUCED LOT 6 AREA BY LOT LINE ADJUSTMENT; BLOCK 6001
6-18-73	REVISED LOTS 3 & 4; BLOCK 6001



NOTE:  
 PLAN OF TAUNTON LAKES, PLATE 7,  
 AND SUBDIVISION OF LANDS OF TAUNTON LAKES CO.-LOT 9, BLOCK 6001.

NOTE:  
 THIS SHEET IS A DIGITIZED COPY OF THE TAX MAP ORIGINALLY PREPARED  
 BY B. HAROLD WILLS DATE: JAN., 1959. THE ORIGINAL APPROVED MAP IS ON  
 FILE IN THE OFFICE OF THE TOWNSHIP ENGINEER.

THIS SHEET WAS FORMALLY APPROVED ON MARCH 12, 1966  
 BY IVAN HAFTHOWITZ AND ASSIGNED SERIAL NUMBER 641

**TAX MAP**  
**MEDFORD TOWNSHIP**  
 BURLINGTON COUNTY, NEW JERSEY  
 SCALE: 1"=100' DATE: JAN., 1959  
 B. HAROLD WILLS TOWNSHIP ENGINEER  
 MT. HOLLY, NEW JERSEY