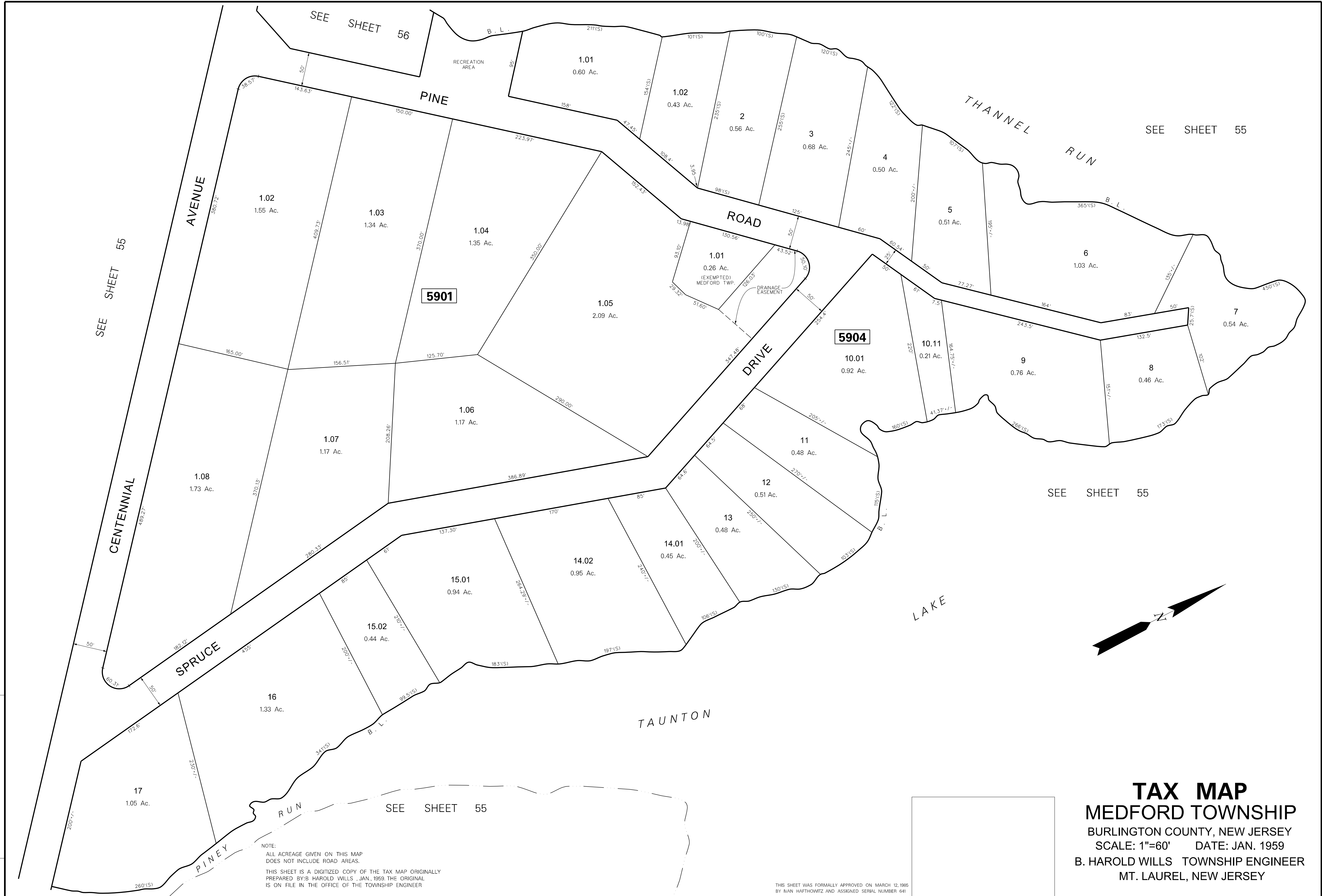


NO.	DATE	REVISION



NOTE:  
 ALL ACREAGE GIVEN ON THIS MAP  
 DOES NOT INCLUDE ROAD AREAS.  
 THIS SHEET IS A DIGITIZED COPY OF THE TAX MAP ORIGINALLY  
 PREPARED BY B. HAROLD WILLS, JAN. 1959. THE ORIGINAL  
 IS ON FILE IN THE OFFICE OF THE TOWNSHIP ENGINEER.

THIS SHEET WAS FORMALLY APPROVED ON MARCH 12, 1986  
 BY IVAN HAFTHOWITZ AND ASSIGNED SERIAL NUMBER 641

**TAX MAP**  
**MEDFORD TOWNSHIP**  
 BURLINGTON COUNTY, NEW JERSEY  
 SCALE: 1"=60' DATE: JAN. 1959  
 B. HAROLD WILLS TOWNSHIP ENGINEER  
 MT. LAUREL, NEW JERSEY