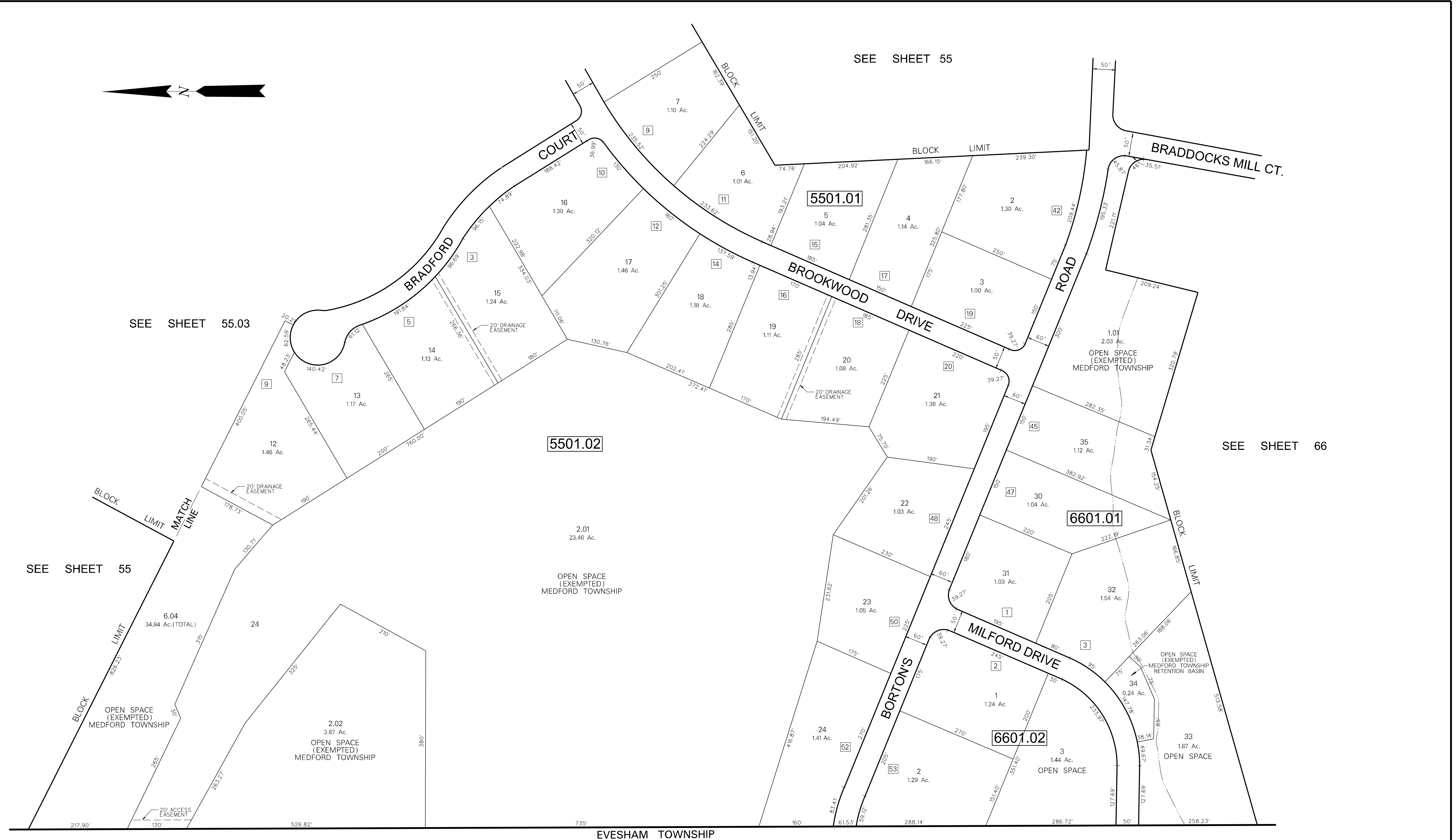


SEE SHEET 55

SEE SHEET 55.03

SEE SHEET 55

SEE SHEET 66



EVESHAM TOWNSHIP

NOTES:

3 DENOTES ADDRESS NUMBER

ALL ACREAGE GIVEN ON THIS MAP DOES NOT INCLUDE ROAD AREAS.

THIS SHEET IS A DIGITIZED COPY OF THE TAX MAP ORIGINALLY PREPARED BY: HARRY O. BATEMAN. THE ORIGINAL IS ON FILE IN THE OFFICE OF THE TOWNSHIP ENGINEER

TAX MAP
MEDFORD TOWNSHIP
 BURLINGTON COUNTY, NEW JERSEY
 SCALE: 1"=100' DATE: SEP. 1985
 HARRY O. BATEMAN TOWNSHIP ENGINEER
 MT. LAUREL, NEW JERSEY

THIS SHEET WAS FORMALLY APPROVED ON MARCH 12, 1985 BY IVAN HAFTHOWITZ AND ASSIGNED SERIAL NUMBER 641

DATE	REVISION
9-11-08	DIGITIZED TAX MAP SHEET 55.02