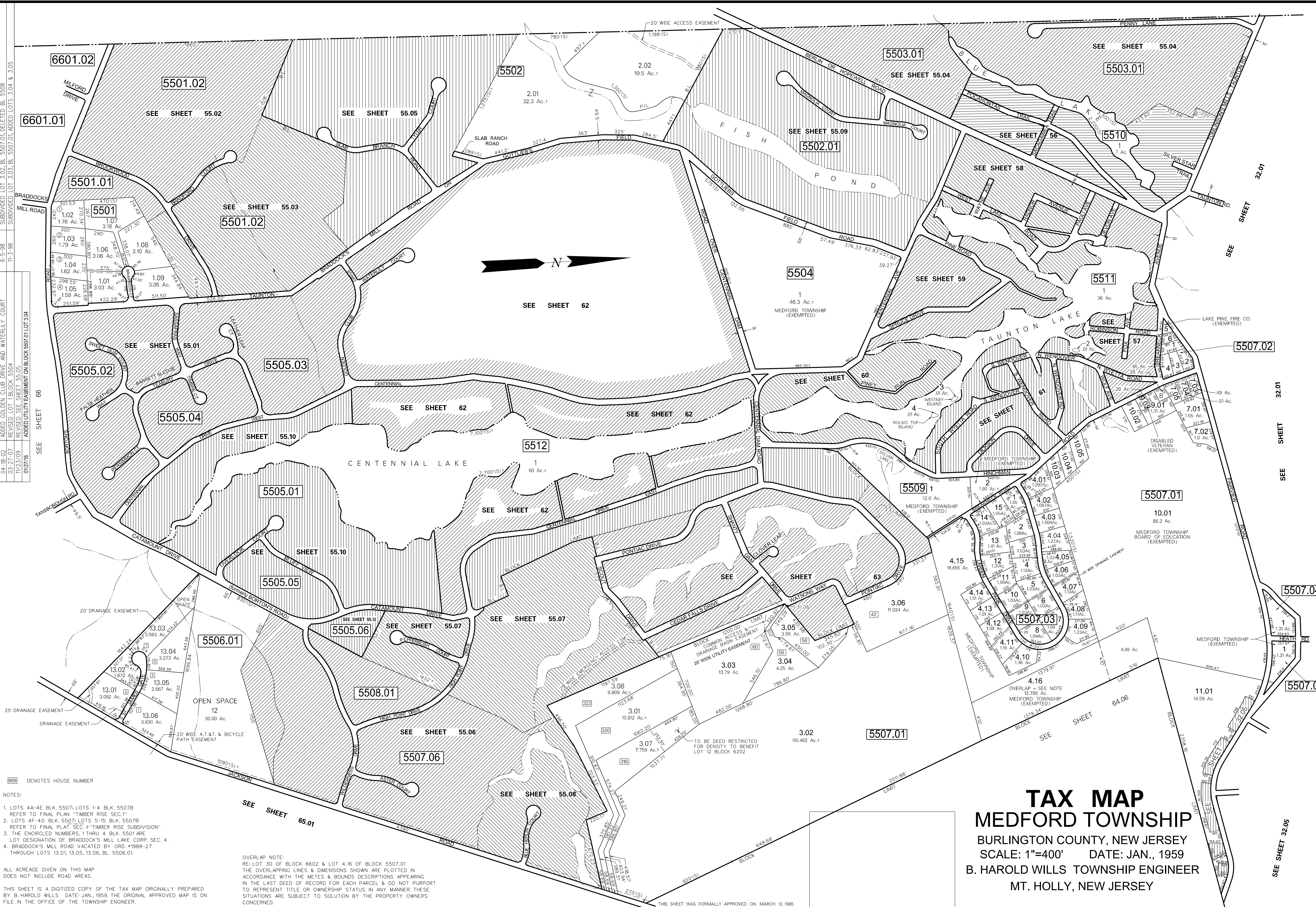


DATE	REVISION
1-29-79	REALIGN FARVIEW RD. TO BL. 5507
1-22-79	SPLIT-OFF LOTS 4A-4E, BLK. 5507 & LOTS 1-4, BL. 5507A FROM LOT 4, BL. 5507
11-15-77	SPLIT-OFF LOT 3 FROM LOT 1, BL. 5504
10-21-76	SPLIT-OFF LOT 2A FROM LOT 2, BL. 5503
9-14-76	SPLIT-OFF LOT 2A FROM LOT 2, BL. 5503
10-27-75	RELOCATED FARVIEW ROAD - LOT 11, BL. 5507 ACCORDING TO FILED PLAN
8-25-75	SPLIT-OFF LOT 6B FROM LOT 6, BL. 5501
8-18-75	SPLIT-OFF LOT 1A FROM LOT 1, BL. 5504
8-5-74	SPLIT-OFF LOTS 1A THRU 1D FROM LOT 1, BL. 5501
7-9-73	ACREAGE WAS 50.9, ADDED OVERLAP LOT 4, BL. 5507
11-22-72	SPLIT-OFF LOT 6A FROM LOT 6, BL. 5501
6-16-72	CHANGED BLOCK LIMIT, SHT. 63, ENLARGES LOT 3, BL. 5507
6-11-71	ADDED NEW BLOCK 5507A (TAUNTON NORTH)
DATE	REVISION
11-24-80	SPLIT-OFF LOTS 5 THRU 15, BL. 5507B AND LOTS 4F THRU 4O, BL. 5507
11-4-80	SPLIT-OFF LOT 7A FROM LOT 7, BL. 5507
3-7-80	SPLIT-OFF LOT 2 FROM LOT 1, BL. 5509
1-28-80	TWT: CHANGED BL. 5507.03 TO BLOCK 5507B
11-15-79	CHANGED LOTS 10A & 10B TO LOTS 10E & 10F ALONG HEATH RD., BL. 5507
11-5-79	SPLIT-OFF LOTS 3A & 3B FROM LOT 3, BL. 5507
9-6-79	ADDED ONTO LOT 3A, BL. 6207 FROM LOTS 2, 3, BL. 5505 - ADDED ONTO LOT 3, BL. 5505 FROM LOT 2, BL. 5505
6-4-79	CHANGED BLOCK 5507B TO 5507.3
2-5-79	SPLIT-OFF LOT 3C FROM LOT 3, BL. 5503
1-29-79	SPLIT-OFF LOTS 12 THRU 39, BL. 5507 FROM LOT 11, BL. 5507 (SEE SHEET 32D)
DATE	REVISION
8-18-88	REVISED BLK. 5501.02, LOT 6.01 TO SHOW SHEETS 55.02, 55.01
12-22-87	SPLIT-OFF LOT 1.01, 1.06, 1.09 FROM LOT 1, BL. 5501
6-23-86	P/O BRADDOCK'S MILL RD. VACATED ORD. #1985-26
9-18-85	SUBDIV. BL. 5507.01 LOTS 3.02, 3.03 (REMOVED LOT LINE)
9-17-85	TWT: CHANGED BL. 5505A LOT 1 TO ADD SHEET 55.01
10-24-84	REVISION
9-1-83	ADDED ALL STREETS THROUGH ADJOINING SHT. 56-63
9-1-83	GENERAL REVISIONS
2-25-83	REMOVED LOT 3.04 & COMBINED W/ 3.01, BL. 5507
2-18-83	CHANGED SIZE OF LOTS 3.01 & 3.03
12-8-82	ALSO ADDED LOT 3.04, BL. 5507
12-8-82	REMOVED LOT 1A & COMBINED WITH LOT 1, BL. 5504
5-10-82	SPLIT-OFF P.O. LOT 18, ADDED TO LOT 1A, BL. 5504
1-28-81	REMOVED LOT 3 & P.O. LOT 18 COMBINED WITH LOT 1A, BL. 5504 - "TWP. OF MEDFORD - EXEMPT"
DATE	REVISION
01-03-02	ADDED "THE BLUFFS" SUBDIVISION BLK. 5505 LOT 1
04-18-02	ADDED GOLDEN CLUB DRIVE AND WATERLY COURT
03-27-07	REVISED LOT 1 BLOCK 5504
11/23/09	REVISED SEE SHEET 55.05
01/27/16	ADDED UTILITY EASEMENT ON BLOCK 5507.01 LOT 3.04
DATE	REVISION
8-18-97	ADDED LOTS 13-17, BL. 5505.01
8-5-97	REVISED BRADDOCK'S MILL RD. AT LOT 3.01, BL. 5507.01 & LOT 2, BL. 5508
7-21-97	ADDED SHEET 55.11 TO INCLUDE MAGNOLIA MANOR, BL. 5502.01
6-11-96	DIGITIZED TWP. 55
5-12-95	REVISED BLOCK 5505
3-18-94	CHANGED BLOCK 5506.01 - ADDED WILDERNESS LAKES SEC. 2
1-14-93	REVISED BLOCK 5506.01 - LOT 13
12-10-92	ADDED SWEET GUM COURT, BARRETT SEDGE & FALSE HEATHER WAY
12-20-89	ADD WILDERNESS & HIGH POINT DRIVES, ASTER, PEPPERBUSH CT'S.
12-19-89	ADD SLAB BRANCH RD. & TYLER CT., SHEET 55.07
3-30-89	GENERAL REVISIONS
1-3-89	ADDED STREETS ON "SEE SHEET 55.01"
1-3-89	P/O GOTTLIEBS FIELD ROAD, VACATED ORD. #1987-8A



TAX MAP
MEDFORD TOWNSHIP
 BURLINGTON COUNTY, NEW JERSEY
 SCALE: 1"=400' DATE: JAN., 1959
 B. HAROLD WILLS TOWNSHIP ENGINEER
 MT. HOLLY, NEW JERSEY

NOTES:
 1. LOTS 4A-4E, BLK. 5507; LOTS 1-4, BLK. 5507B REFER TO FINAL PLAN "TIMBER RISE SEC. 1"
 2. LOTS 4F-4O, BLK. 5507; LOTS 5-15, BLK. 5507B REFER TO FINAL PLAT SEC. 11 "TIMBER RISE SUBDIVISION"
 3. THE ENCIRCLED NUMBERS 1 THRU 4, BLK. 5501 ARE LOT DESIGNATION OF BRADDOCK'S MILL LAKE CORP. SEC. 4.
 4. BRADDOCK'S MILL ROAD VACATED BY ORD. #1988-27 THROUGH LOTS 13.01, 13.05, 13.06, BL. 5506.01.

OVERLAP NOTE:
 RE: LOT 39 OF BLOCK 6602 & LOT 4.16 OF BLOCK 5507.01
 THE OVERLAPPING LINES & DIMENSIONS SHOWN ARE PLOTTED IN ACCORDANCE WITH THE METES & BOUNDS DESCRIPTIONS APPEARING IN THE LAST DEED OF RECORD FOR EACH PARCEL & DO NOT PURPORT TO REPRESENT TITLE OR OWNERSHIP STATUS IN ANY MANNER. THESE SITUATIONS ARE SUBJECT TO SOLUTION BY THE PROPERTY OWNERS CONCERNED.

THIS SHEET WAS FORMALLY APPROVED ON MARCH 12, 1986 BY IVAN HATHOWITZ AND ASSIGNED SERIAL NUMBER 691

SEE SHEET 32.05