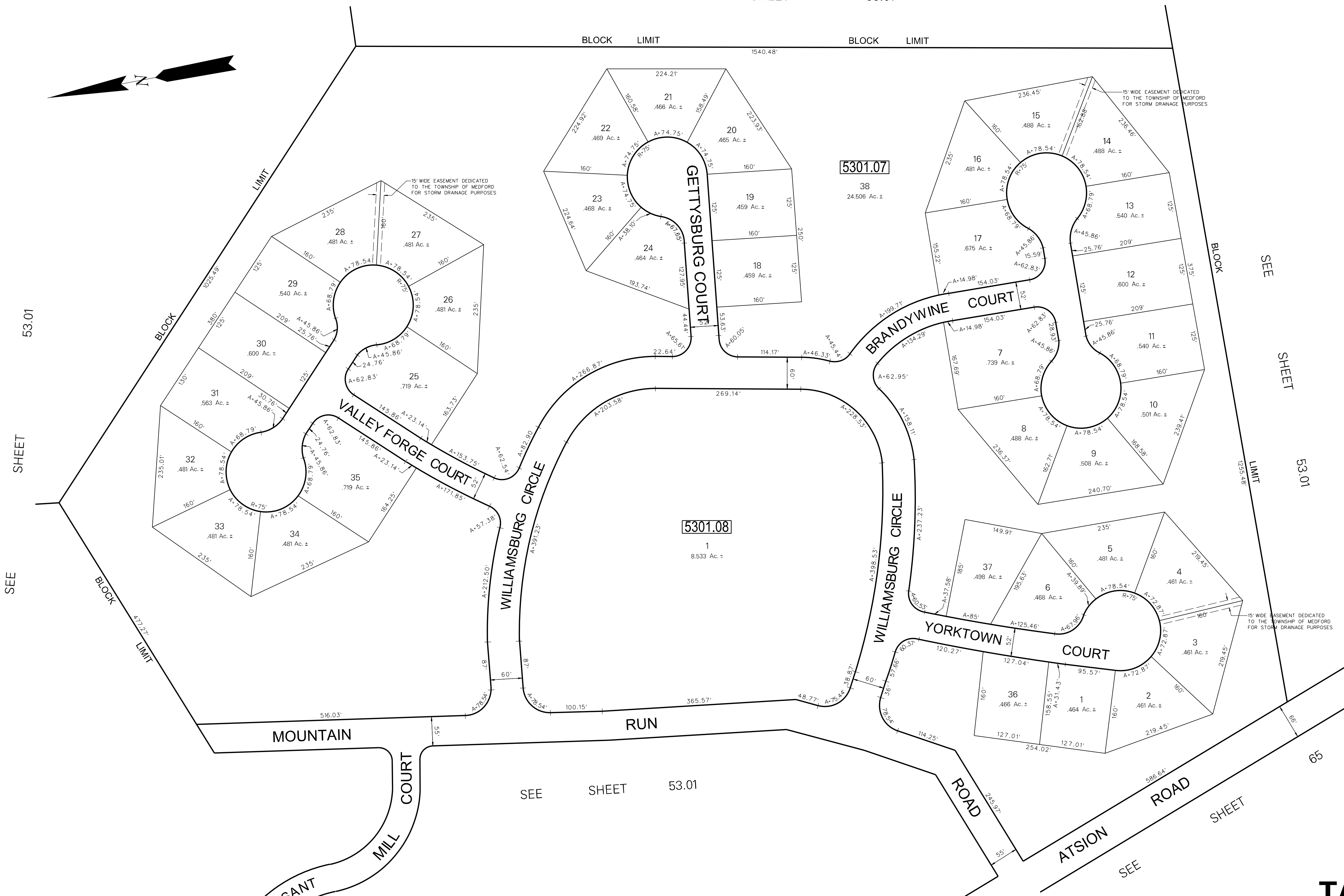


SEE SHEET 53.01



SEE SHEET 53.01

SEE SHEET 53.01

SEE SHEET 53.01

SEE SHEET 65

DATE	REVISION
11/22/00	DIGITIZED TAX MAP SHEET 53.04
9/1/83	GENERAL REVISIONS - BY T.M.T.
12/14/76	ADDED LOT AREA-BLK 5301-F, LOTS 7-36
10/14/76	SPLIT-OFF LOTS 7 THRU 35 FROM LOT 26, BLK 5301, "OAK PINES II"

NOTE:
THIS SHEET IS A DIGITIZED COPY OF THE TAX MAP ORIGINALLY PREPARED BY C. KENNETH ANDERSON, DATE: FEB, 1976. THE ORIGINAL APPROVED MAP IS ON FILE IN THE OFFICE OF THE TOWNSHIP ENGINEER.

NOTE:
LOT NUMBERS REFER TO FINAL PLAT, SECTION 1 & 2 OAK PINES.

NOTE:
ALL ACRES GIVEN ON THIS MAP DOES NOT INCLUDE ROAD AREAS.

ATLANTIC CITY ELECTRIC COMPANY EASEMENT IS LIMITED TO EXISTING FACILITIES AND THE INSTALLATION OF ONE POLE BETWEEN POLE NO. H19929 AND H19928 ALONG ATSION ROAD.

THIS SHEET WAS FORMALLY APPROVED ON MARCH 12, 1985 BY RAY HATHOWITZ AND ASSIGNED SERIAL NUMBER 641

TAX MAP
MEDFORD TOWNSHIP
 BURLINGTON COUNTY, NEW JERSEY
 SCALE: 1"=100' DATE: FEB, 1976
 C. KENNETH ANDERSON TOWNSHIP ENGINEER
 MT. HOLLY, NEW JERSEY