

NOTE: THIS SHEET IS A DIGITIZED COPY OF THE TAX MAP ORIGINALLY PREPARED BY C. KENNETH ANDERSON, DATE: JUNE, 1974. THE ORIGINAL APPROVED MAP IS ON FILE IN THE OFFICE OF THE TOWNSHIP ENGINEER.

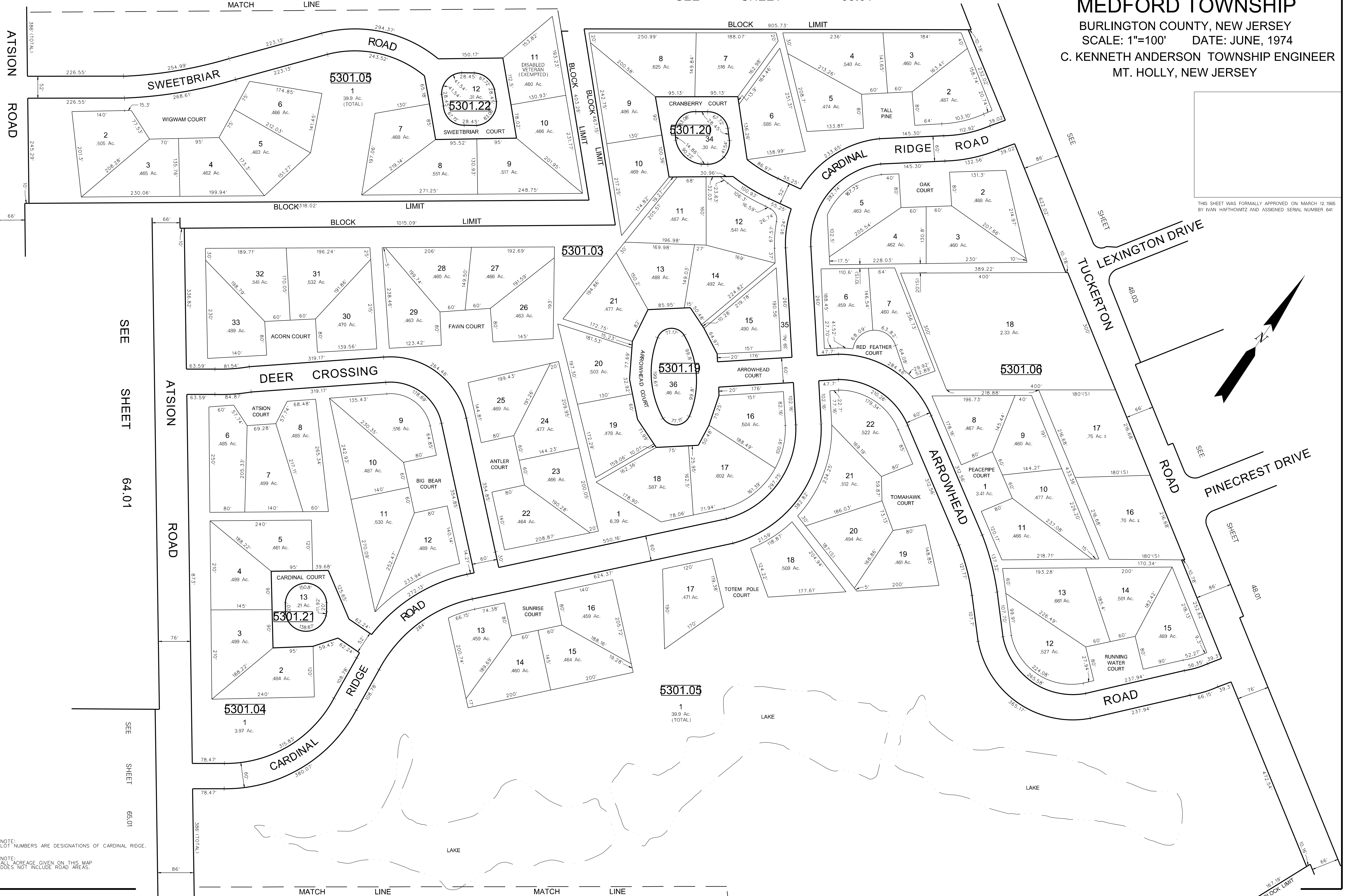
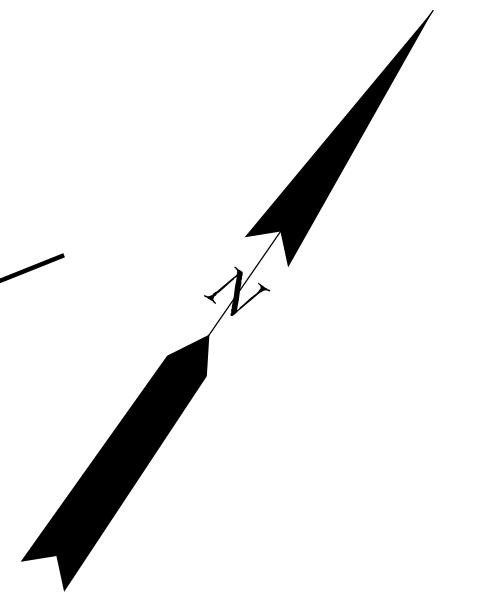
# TAX MAP

## MEDFORD TOWNSHIP

BURLINGTON COUNTY, NEW JERSEY  
SCALE: 1"=100' DATE: JUNE, 1974  
C. KENNETH ANDERSON TOWNSHIP ENGINEER  
MT. HOLLY, NEW JERSEY

SEE SHEET 53.01

THIS SHEET WAS FORMALLY APPROVED ON MARCH 12, 1985 BY IVAN HATHAWAY AND ASSIGNED SERIAL NUMBER 641



DATE	REVISION
11/25/00	DIGITIZED TAX MAP SHEET 53.02
10/24/84	REVISIONS
11/16/83	ADDED LEXINGTON AND PINECREST DRIVE
9/1/83	GENERAL REVISIONS - BY T.M.T.

NOTE: LOT NUMBERS ARE DESIGNATIONS OF CARDINAL RIDGE.

NOTE: ALL ACREAGE GIVEN ON THIS MAP DOES NOT INCLUDE ROAD AREAS.

SEE SHEET 64.01

SEE SHEET 65.01

BLOCK LIMIT SEE SHEET 53.01 BLOCK LIMIT