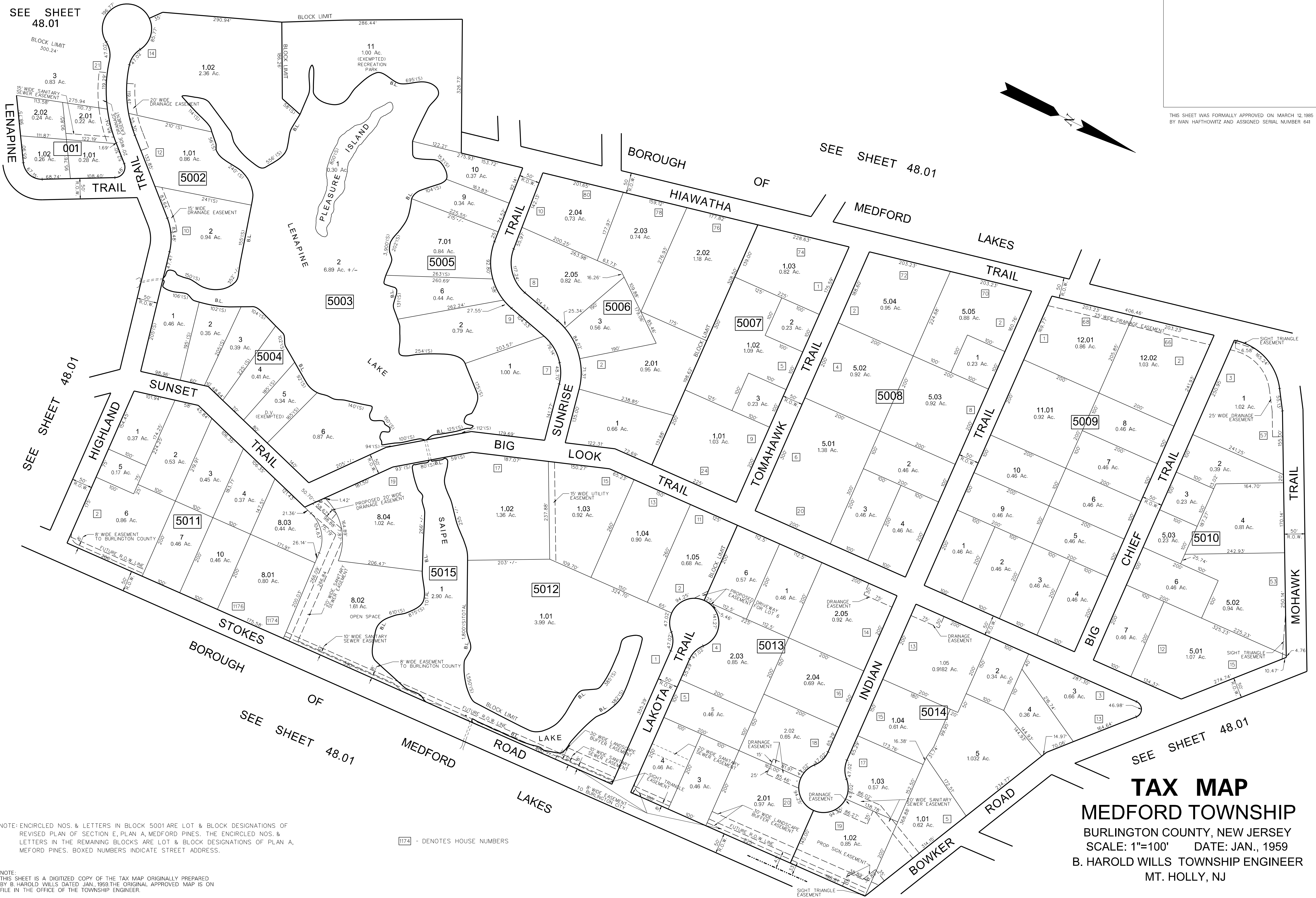
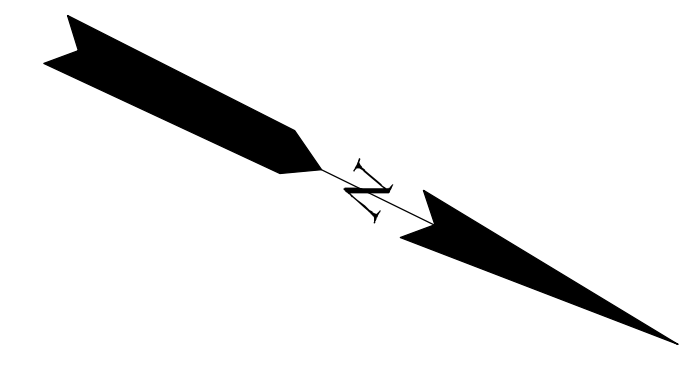


THIS SHEET WAS FORMALLY APPROVED ON MARCH 12, 1985 BY IVAN HAFTHOWITZ AND ASSIGNED SERIAL NUMBER 641



DATE	REVISION
8-14-07	REVISED BLOCK 5001 LOT 3
8-08-07	REVISED HOUSE NUMBERS BLOCK 5011 LOT 8 01
3-28-06	RENUMBERED LOT 7 TO LOT 7.01 OF BLK 5005
8-28-05	CONSOLIDATION OF LOTS 11.01 & 11.02 OF BLOCK 5009
8-28-05	CONSOLIDATION OF LOTS 7 & 8 OF BLOCK 5005
2-20-02	REVISED STREET & LOT LAYOUT
9-1-83	SPLIT OFF LOTS 3, 4, 5 & 6 FROM LOT 2 BLOCK 5013
9-1-83	SPLIT OFF LOT 3 FROM LOT 2 BLOCK 5006
9-1-83	GENERAL REVISION BY T.W.T.
5-19-75	VACATED PORTION OF TOMAHAWK TR.

NOTE: ENCIRCLED NOS. & LETTERS IN BLOCK 5001 ARE LOT & BLOCK DESIGNATIONS OF REVISED PLAN OF SECTION E, PLAN A, MEDFORD PINES. THE ENCIRCLED NOS. & LETTERS IN THE REMAINING BLOCKS ARE LOT & BLOCK DESIGNATIONS OF PLAN A, MEDFORD PINES. BOXED NUMBERS INDICATE STREET ADDRESS.

1174 - DENOTES HOUSE NUMBERS

NOTE: THIS SHEET IS A DIGITIZED COPY OF THE TAX MAP ORIGINALLY PREPARED BY B. HAROLD WILLS DATED JAN., 1959. THE ORIGINAL APPROVED MAP IS ON FILE IN THE OFFICE OF THE TOWNSHIP ENGINEER.

**TAX MAP**  
**MEDFORD TOWNSHIP**  
BURLINGTON COUNTY, NEW JERSEY  
SCALE: 1"=100' DATE: JAN., 1959  
B. HAROLD WILLS TOWNSHIP ENGINEER  
MT. HOLLY, NJ