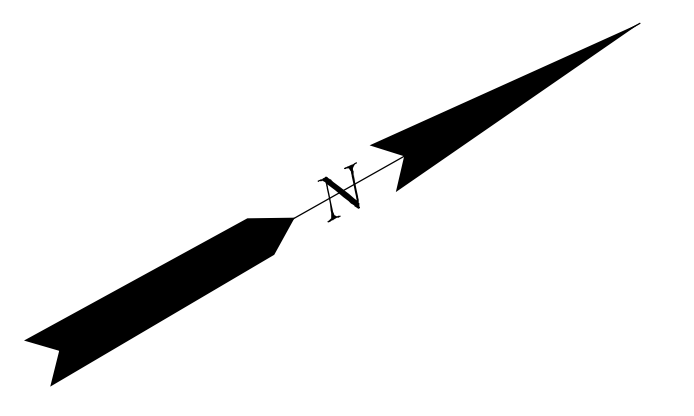
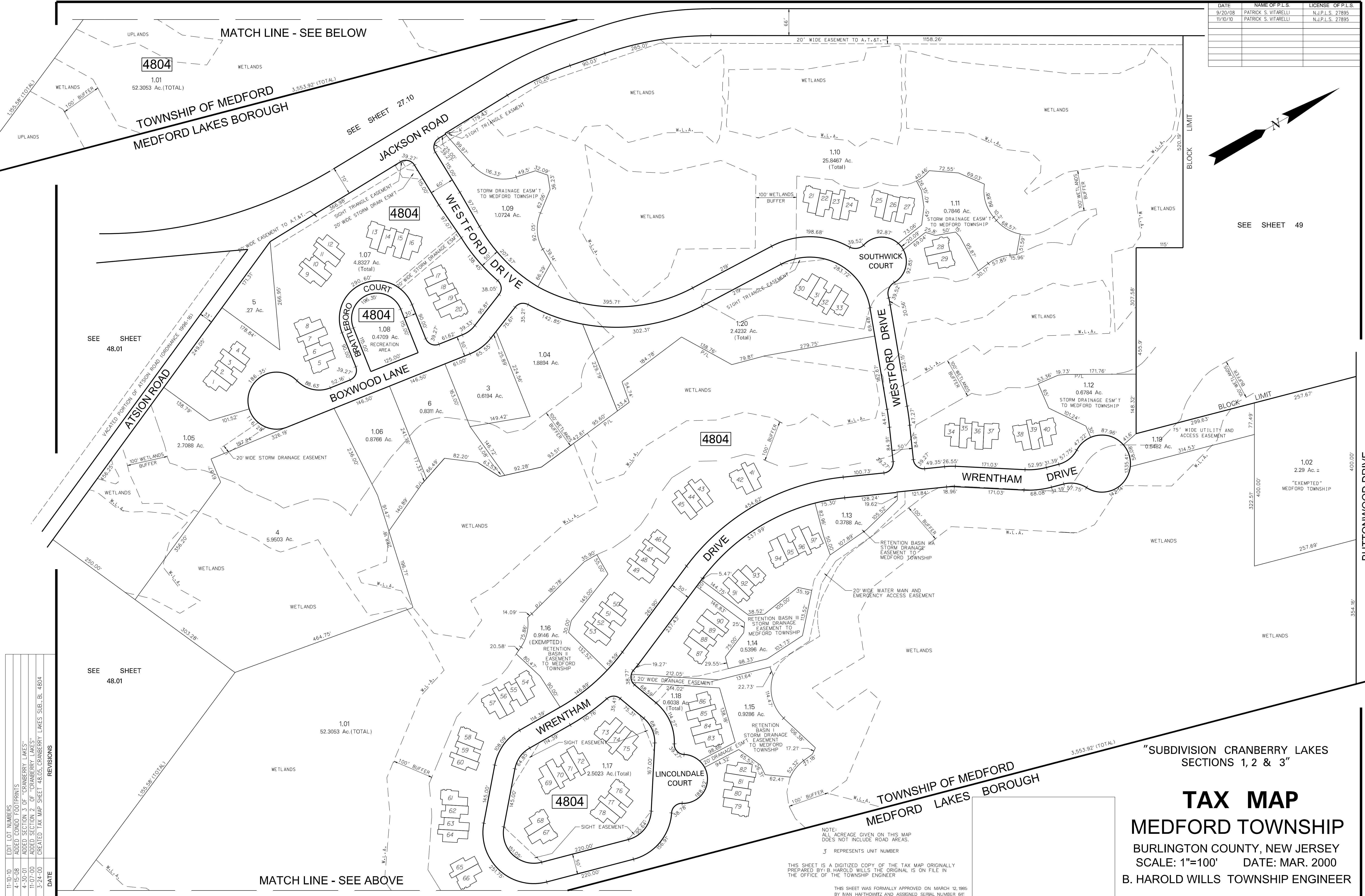


DATE	NAME OF P.L.S.	LICENSE OF P.L.S.
9/20/08	PATRICK S. VITARELLI	N.J.P.L.S. 27895
11/10/10	PATRICK S. VITARELLI	N.J.P.L.S. 27895



SEE SHEET 49



MATCH LINE - SEE BELOW

SEE SHEET 48.01

SEE SHEET 48.01

MATCH LINE - SEE ABOVE

"SUBDIVISION CRANBERRY LAKES SECTIONS 1, 2 & 3"

TAX MAP
MEDFORD TOWNSHIP
 BURLINGTON COUNTY, NEW JERSEY
 SCALE: 1"=100' DATE: MAR. 2000
 B. HAROLD WILLS TOWNSHIP ENGINEER

DATE	REVISIONS
11-10-10	EDIT LOT NUMBERS
4-15-08	ADDED CONDO FOOTPRINTS
4-30-01	ADDED SECTION 3 OF "CRANBERRY LAKES"
11-07-00	ADDED SECTION 2 OF "CRANBERRY LAKES"
3-24-00	CREATED TAX MAP SHEET 48.05, CRANBERRY LAKES SUB., BL. 4804

NOTE:
 ALL ACREAGE GIVEN ON THIS MAP DOES NOT INCLUDE ROAD AREAS.
 3 REPRESENTS UNIT NUMBER

THIS SHEET IS A DIGITIZED COPY OF THE TAX MAP ORIGINALLY PREPARED BY B. HAROLD WILLS. THE ORIGINAL IS ON FILE IN THE OFFICE OF THE TOWNSHIP ENGINEER.

THIS SHEET WAS FORMALLY APPROVED ON MARCH 12, 1986 BY MAY HATHORWITZ AND ASSIGNED SERIAL NUMBER 64