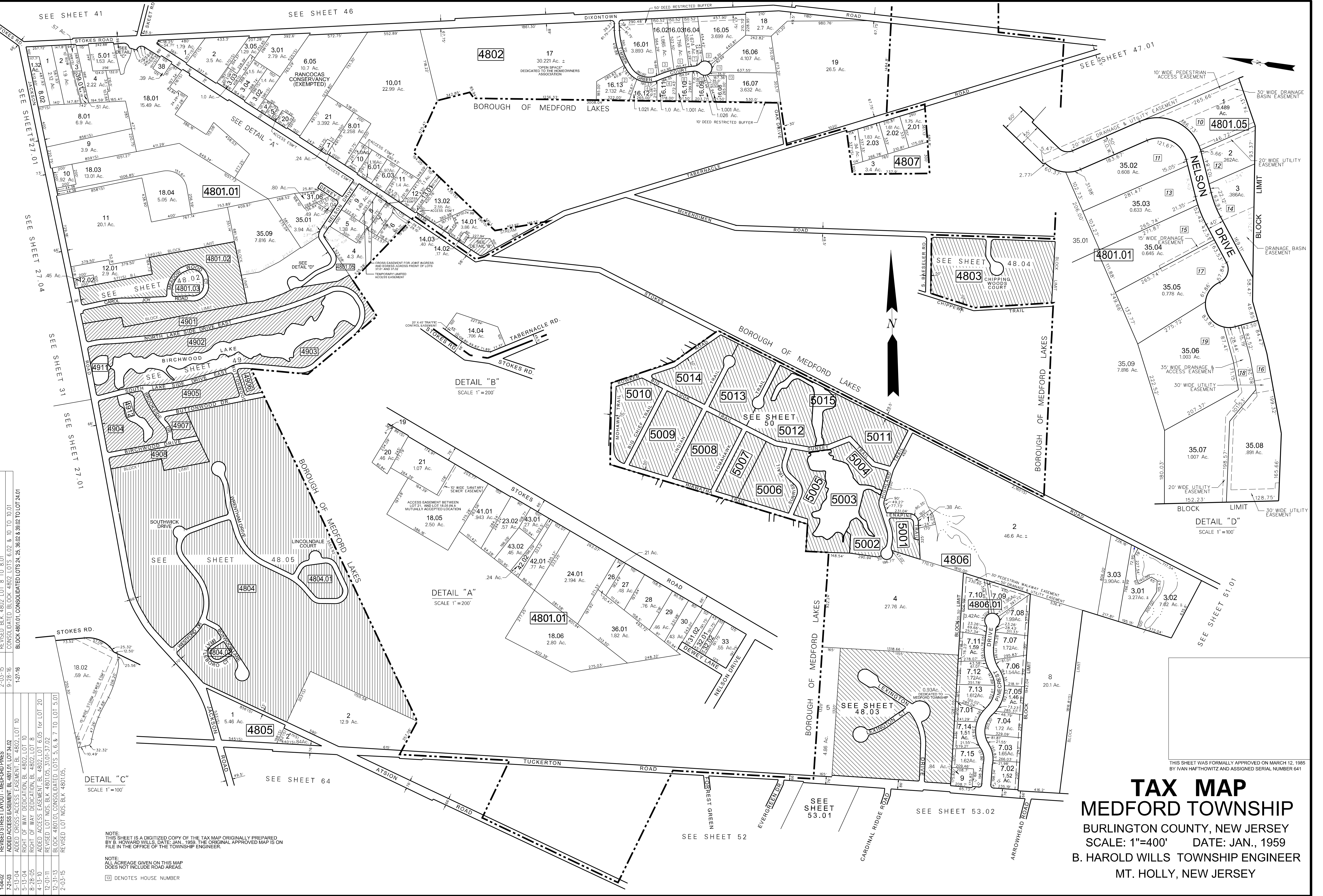


DATE	REVISION
10-15-01	ADDED SAN SEWER AND ACCESS EASEMENTS TO LOT 18.05 BLK 4801.01
8-28-01	ADDED CROSS EASEMENT NOTE FOR BL 4801.01 LOTS 97.01, 97.02
1-25-01	ADDED CRANBERRY LAKES SECTION 2, BL 4804
3-27-00	ADDED TEMPORARY EASEMENT TO LOT 37.02, BL 4801.01
3-24-00	ADDED CRANBERRY LAKES SECTION 1, BL 4804
4-28-99	GENERAL REVISIONS TO LOT 35.02, BL 4802
11-19-98	REVISED MINOR SUBDIVISION, LOTS 16.13 & 17, BLOCK 4802
2-27-98	ADDED "TIMBER GREEN" SUBDIVISION, LOTS 16 & 17, BLK 4802
3-14-95	DIGITIZED TAX MAP SHEET 48.01
8-16-93	SUBDIVISION OF LOT 2, BLK 4807
1-19-93	ADDED ACCESS EASEMENT TO LOT 13.02
1-19-93	CONSOLIDATED LOT 35.01, 31.05, BLK 4801.01
10-15-01	REVISION
10-15-01	DATE
5-17-91	SUBDIVISION OF LOT 18.01, BLK 4801.01
12-10-87	REVISION OF LOTS 18.01 & 21, BLK 4801.01, DEL. LOTS 22, 23.01
12-9-87	SPLIT-OFF LOT 6.05 FROM 6.02, BLK 4802
12-9-87	REVISION OF LOTS 34.01 & 34.02, BLK 4801
11-6-86	BLK 4802, ADDED NEW LOT 8, DELETED LOTS 8 & 9
10-24-84	REVISIONS
4-10-84	ADD DETAIL "B", ROAD WIDENED AT LOT 14.04
11-14-83	ADDED "BRANDY WINE WOODS," SEE SHEET 48.03
10-3-83	RELOCATED LOT LINES BETWEEN LOTS 4 & 18.01, BLK 4801.01
9-28-83	ADDED R.O.W. DEDICATION TO LOT 18.01, BLK 4801.01
9-1-83	ADDED LOT 6, BLK 4804
9-1-83	ADDED LOT 10A, DEL. LOT 10, ADDED AC. TO LOT 18, BLK 4801
9-1-83	REVISION
9-1-83	DATE
2-03-15	REVISED BLK 4802 LOT 8 TO 8.01
9-28-15	CONSOLIDATED BLOCK 4802 LOTS 6.02 & 10 TO 10.01
1-27-16	BLOCK 4801.01, CONSOLIDATED LOTS 24, 25, 36.02 & 38.02 TO LOT 24.01
8-6-75	SPLIT-OFF LOTS 1C & 1D FROM LOT 1, BLK 4804
1-20-75	SPLIT-OFF LOT 14B FROM 14, BLK 4802
12-18-74	SUBDIVISION OF LOT 7, BLK 4802
8-1-74	SPLIT-OFF LOT 1B FROM LOT 1, BLK 4804
6-17-74	SPLIT-OFF LOT 1A FROM LOT 1, BLK 4804
8-15-73	CHANGE LOT 31A TO 31E
2-23-73	REVISED WIDTH OF STOKES RD., BLK 4801, 4802
2-21-73	ADDED LOT 42A, BLK 4801, FROM LOT 42
6-16-72	BLK 4801, LOT 31B WAS 31D & LOT 31D WAS LOT 1B
3-28-72	ADDED LOT 23B, 31A, 31B, 31C, 31D, BLK 4801
11-1-71	ADDED LOT 14A TO 14, BLK 4802
11-10-70	ADDED LOT 3C, BLK 4802
10-03-15	REVISED LOT NOS. BLK 4801.05,



NOTE:
THIS SHEET IS A DIGITIZED COPY OF THE TAX MAP ORIGINALLY PREPARED BY B. HOWARD WILLS, DATE: JAN., 1959. THE ORIGINAL APPROVED MAP IS ON FILE IN THE OFFICE OF THE TOWNSHIP ENGINEER.

NOTE:
ALL ACREAGE GIVEN ON THIS MAP DOES NOT INCLUDE ROAD AREAS.
☐ DENOTES HOUSE NUMBER

TAX MAP
MEDFORD TOWNSHIP
 BURLINGTON COUNTY, NEW JERSEY
 SCALE: 1"=400' DATE: JAN., 1959
 B. HAROLD WILLS TOWNSHIP ENGINEER
 MT. HOLLY, NEW JERSEY

THIS SHEET WAS FORMALLY APPROVED ON MARCH 12, 1985 BY IVAN HATHAWAY AND ASSIGNED SERIAL NUMBER 641