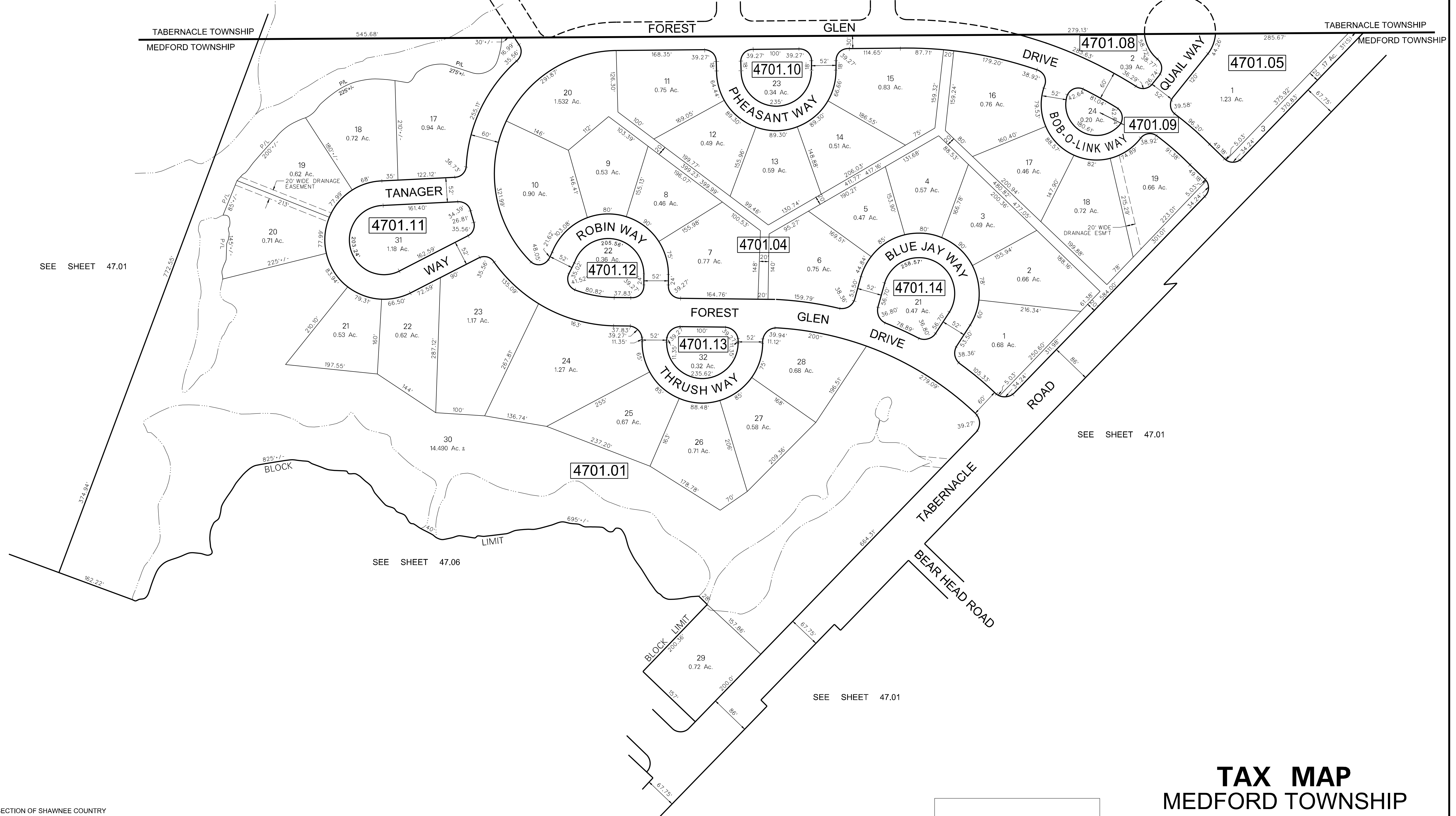
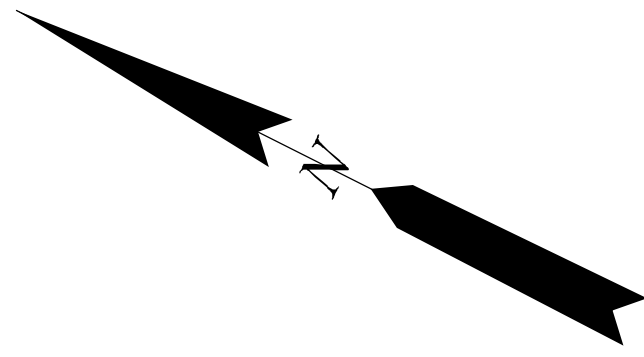


DATE	NAME OF P.L.S.	LICENSE # OF P.L.S.
9/21/16	CHARLES L. WALTON JR.	N.J.P.E.&L.S.#15800



SEE SHEET 47.01

SEE SHEET 47.01

SEE SHEET 47.06

SEE SHEET 47.01

NOTES:
 LOT, BLOCK & SECTION OF SHAWNEE COUNTRY DESIGNATION AS FOLLOWS:
 LOTS 46 THRU 55, BLOCK 4701.02, SECTION 6
 LOTS 33 THRU 37, BLOCK 4701.03, SECTION 6
 LOTS 56 THRU 61, BLOCK 4701.02, SECTION 7
 LOTS 38 THRU 44, BLOCK 4701.03, SECTION 7

ALL ACREAGE GIVEN ON THIS MAP DOES NOT INCLUDE ROAD AREAS.
 THIS SHEET IS A DIGITIZED COPY OF THE TAX MAP ORIGINALLY PREPARED BY: C. KENNETH ANDERSON. THE ORIGINAL IS ON FILE IN THE OFFICE OF THE TOWNSHIP ENGINEER

THIS SHEET WAS FORMALLY APPROVED ON MARCH 12, 1985 BY IVAN HAFTHOWITZ AND ASSIGNED SERIAL NUMBER 641

TAX MAP
MEDFORD TOWNSHIP
 BURLINGTON COUNTY, NEW JERSEY
 SCALE: 1"=100' DATE: MAR. 1976
 C. KENNETH ANDERSON TOWNSHIP ENGINEER
 MOUNT HOLLY, NEW JERSEY