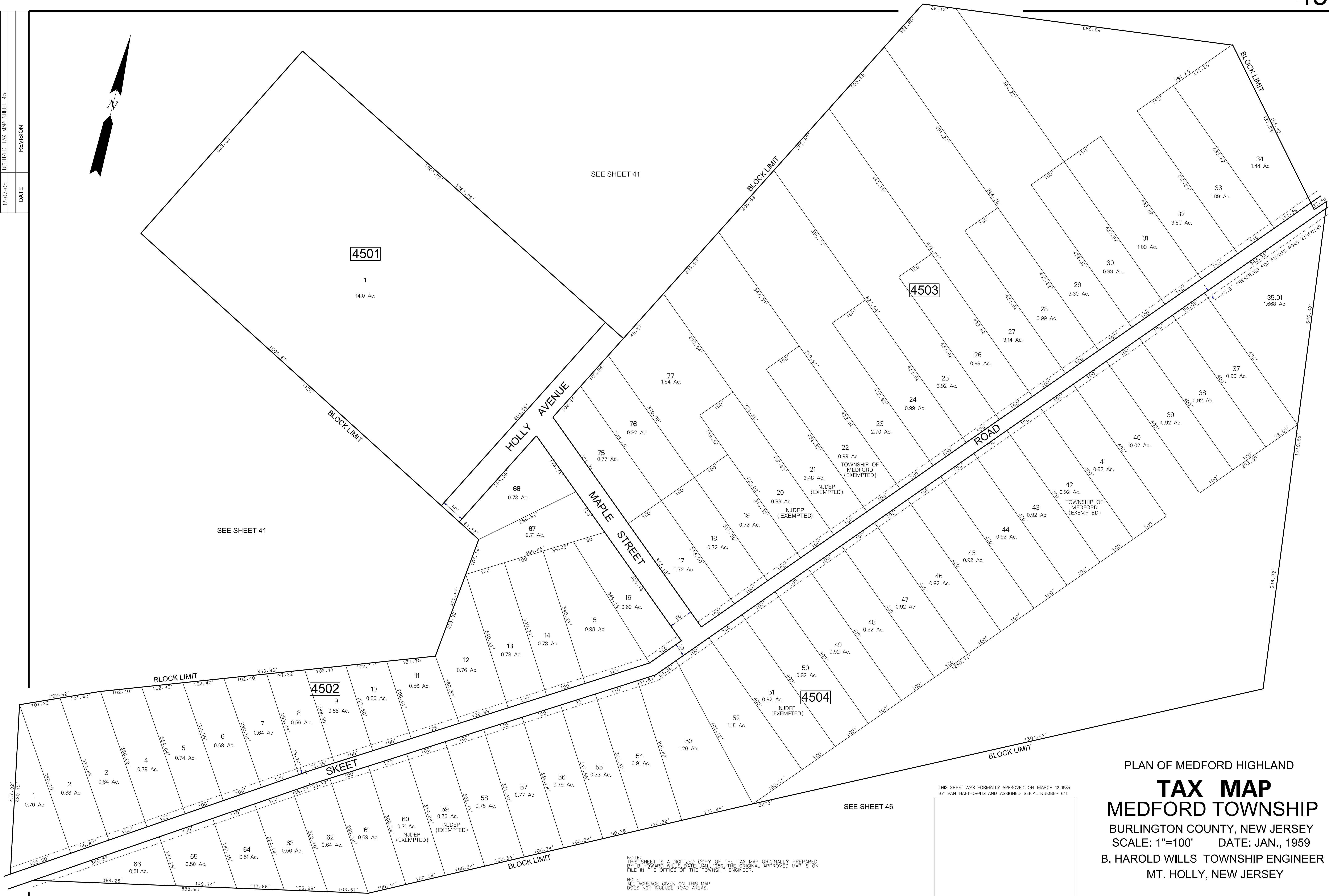
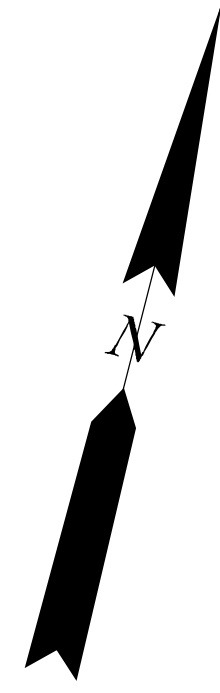


03/27/16	REVISED BLOCK 4501 LOT 20
12/07/09	CONSOLIDATION OF LOTS TO LOT 35.01 BLOCK 4504
12/07/05	DIGITIZED TAX MAP SHEET 45
DATE	REVISION



NOTE:  
THIS SHEET IS A DIGITIZED COPY OF THE TAX MAP ORIGINALLY PREPARED  
BY B. HOWARD WILLS, DATE: JAN., 1959. THE ORIGINAL APPROVED MAP IS ON  
FILE IN THE OFFICE OF THE TOWNSHIP ENGINEER.

NOTE:  
ALL ACREAGE GIVEN ON THIS MAP  
DOES NOT INCLUDE ROAD AREAS.

THIS SHEET WAS FORMALLY APPROVED ON MARCH 12, 1985  
BY IVAN HAFTHOVITZ AND ASSIGNED SERIAL NUMBER 641

PLAN OF MEDFORD HIGHLAND  
**TAX MAP**  
**MEDFORD TOWNSHIP**  
 BURLINGTON COUNTY, NEW JERSEY  
 SCALE: 1"=100' DATE: JAN., 1959  
 B. HAROLD WILLS TOWNSHIP ENGINEER  
 MT. HOLLY, NEW JERSEY