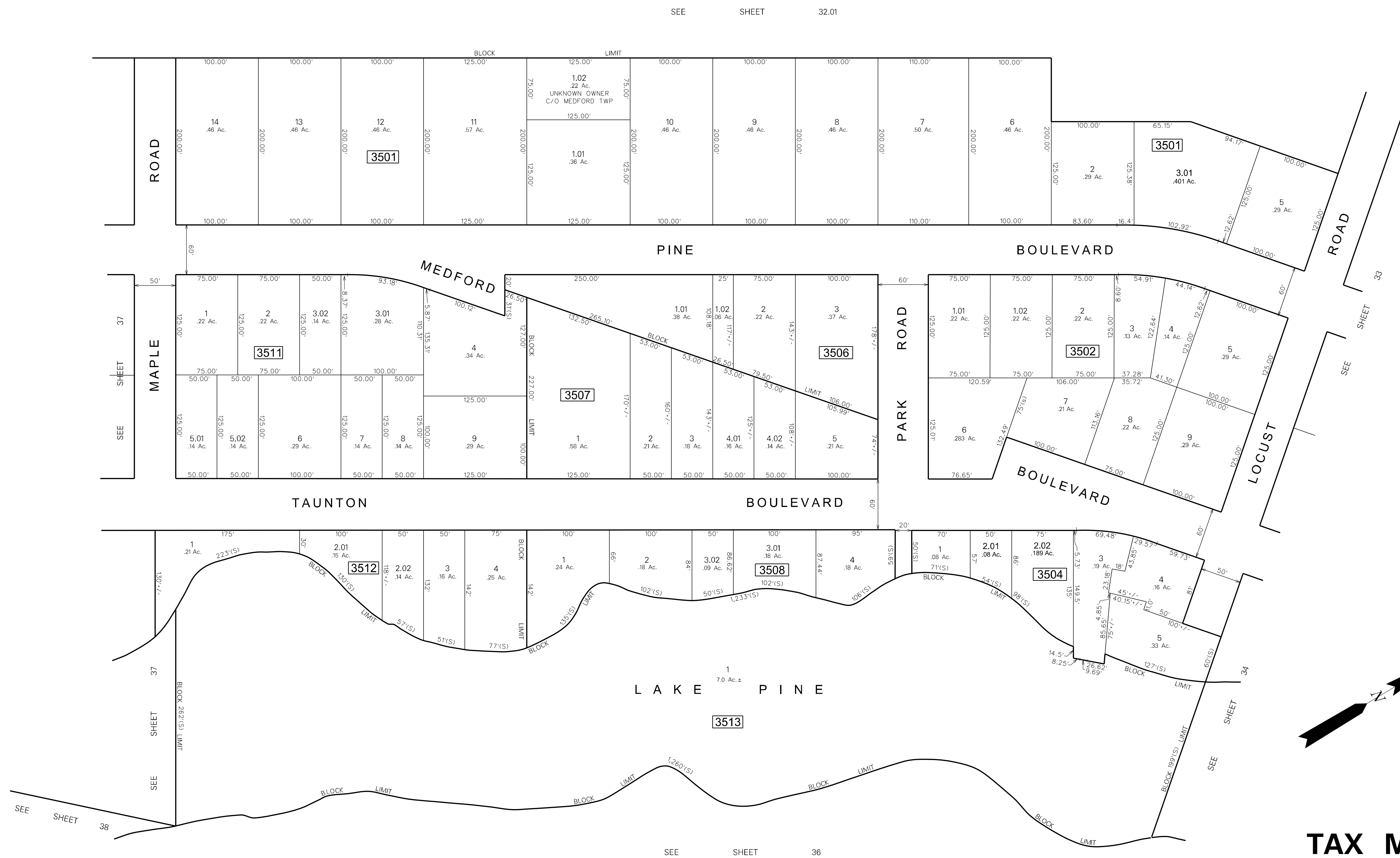


DATE	REVISION
1-4-99	VACATED PORTION OF PARK ROAD - ORD. 1998-13
2-15-95	DIGITIZED TAX MAP SHEET 35
10-3-85	REVISED LOT LINES: BLOCK 3504, LOTS 3, 4 & 5
9-1-85	CHANGED BLOCK 3504, LOT 5
9-1-85	SPLIT-OFF LOTS 1, 01.1, 02 FROM LOT 1, BLOCK 3502
9-1-85	SPLIT-OFF LOTS 2, 01, 2, 02 FROM LOT 2, BLOCK 3512
9-1-85	SPLIT-OFF LOTS 1, 01, 1, 02 FROM LOT 1, BLOCK 3506
9-1-85	BT L.W.T. - GENERAL REVISIONS
7-29-77	VACATED PORTION OF OAK ROAD - ORD. 1975-4
5-19-75	RELOCATED PORTION OF OAK ROAD, B.LKS 3511, 3507

DATE	REVISION
3-18-15	CONSOLIDATED LOT 3.01, BLOCK 3501 FROM LOTS 3 & 4
3-18-15	SPLIT LOTS 2.01, 2.02 FROM 2, BLOCK 3504
1-23-99	CONSOLIDATED LOT 1, B.L. 3503 INTO LOT 6, B.L. 3502

NOTE:  
ALL ACREAGE GIVEN ON THIS MAP  
DOES NOT INCLUDE ROAD AREAS.

NOTE:  
THIS SHEET IS A DIGITIZED COPY OF THE TAX MAP ORIGINALLY PREPARED  
BY B. HAROLD WILLS DATED JAN. 1969. THE ORIGINAL APPROVED MAP IS ON  
FILE IN THE OFFICE OF THE TOWNSHIP ENGINEER.



**TAX MAP**  
**MEDFORD TOWNSHIP**  
 BURLINGTON COUNTY, NEW JERSEY  
 SCALE: 1"=60' DATE: JAN., 1959  
**B. HAROLD WILLS**  
**TOWNSHIP ENGINEER**  
 MT. HOLLY, N.J.

THIS SHEET WAS FORMALLY APPROVED ON MARCH 12, 1986  
 BY IVAN HAFTHOWITZ AND ASSIGNED SERIAL NUMBER 641