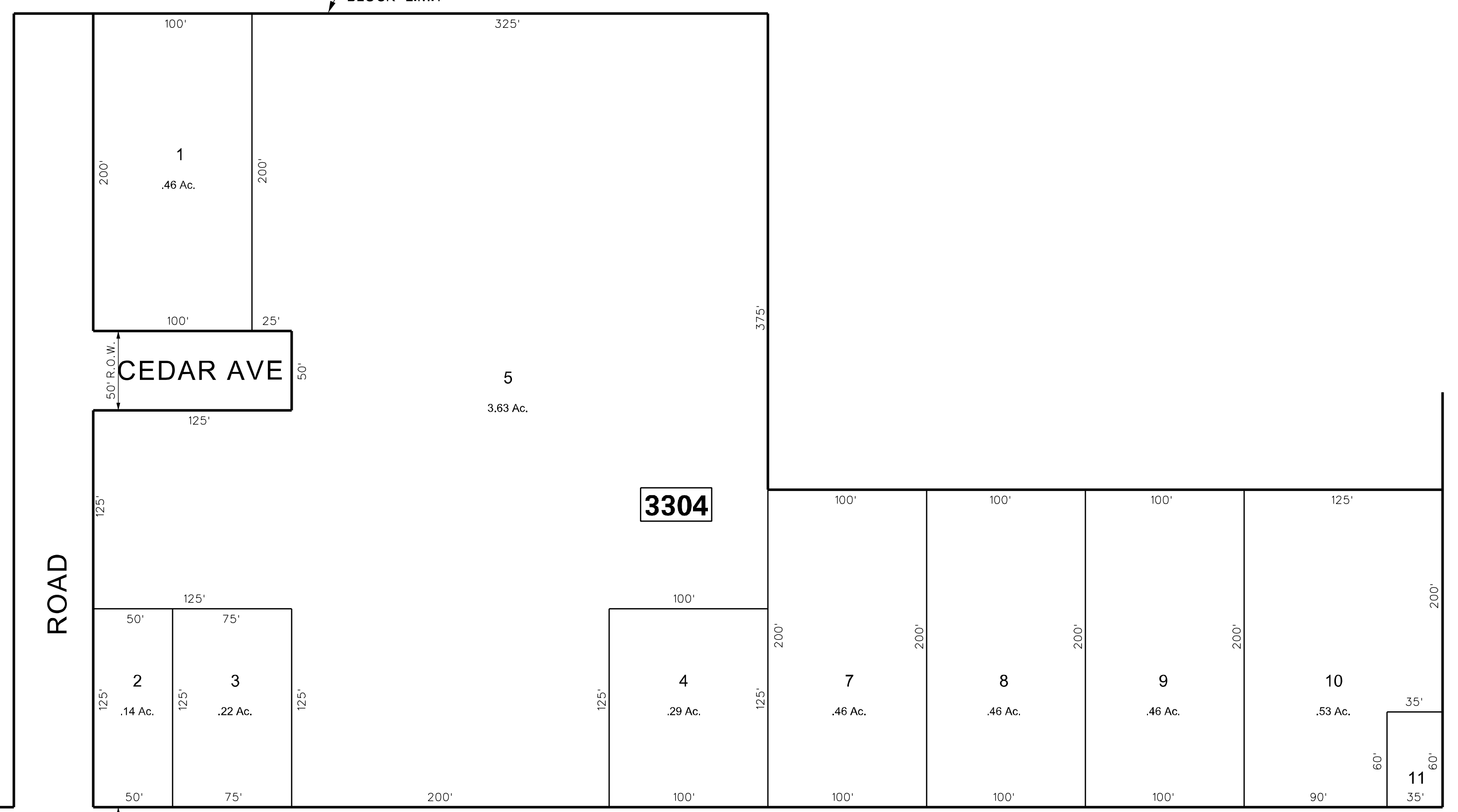
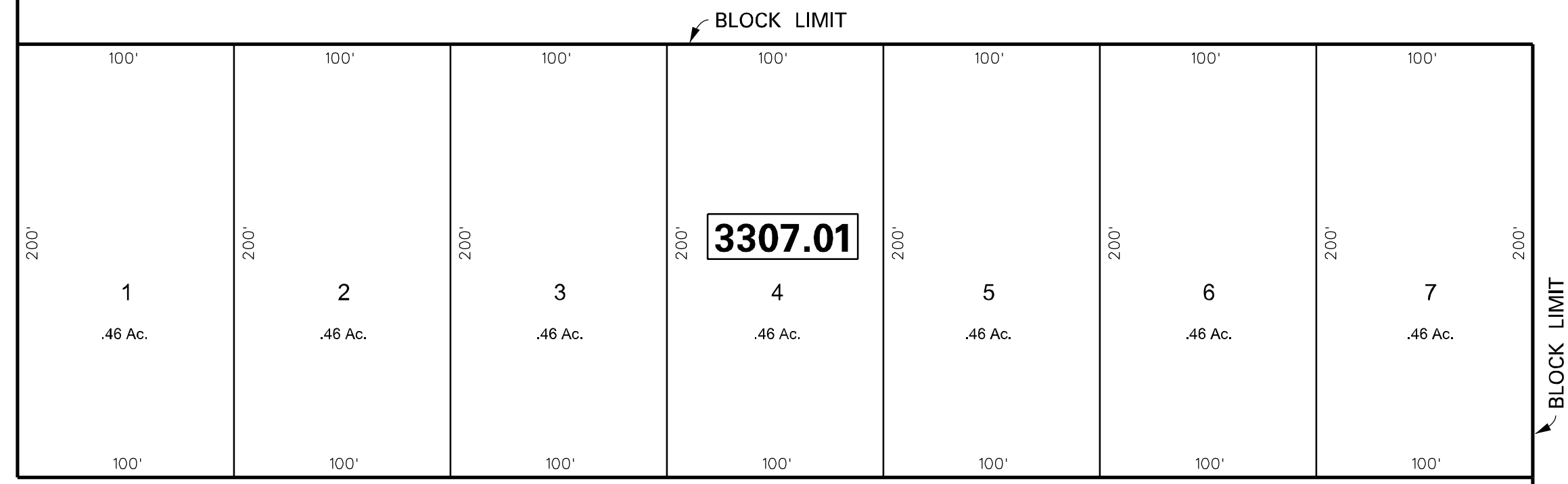


SEE SHEET 32.01

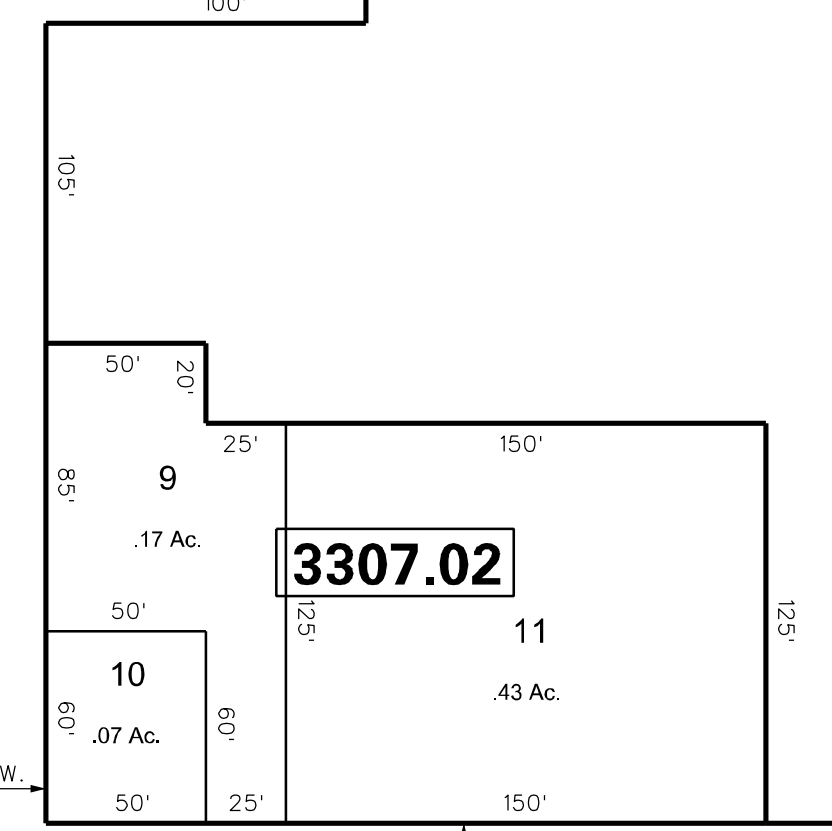
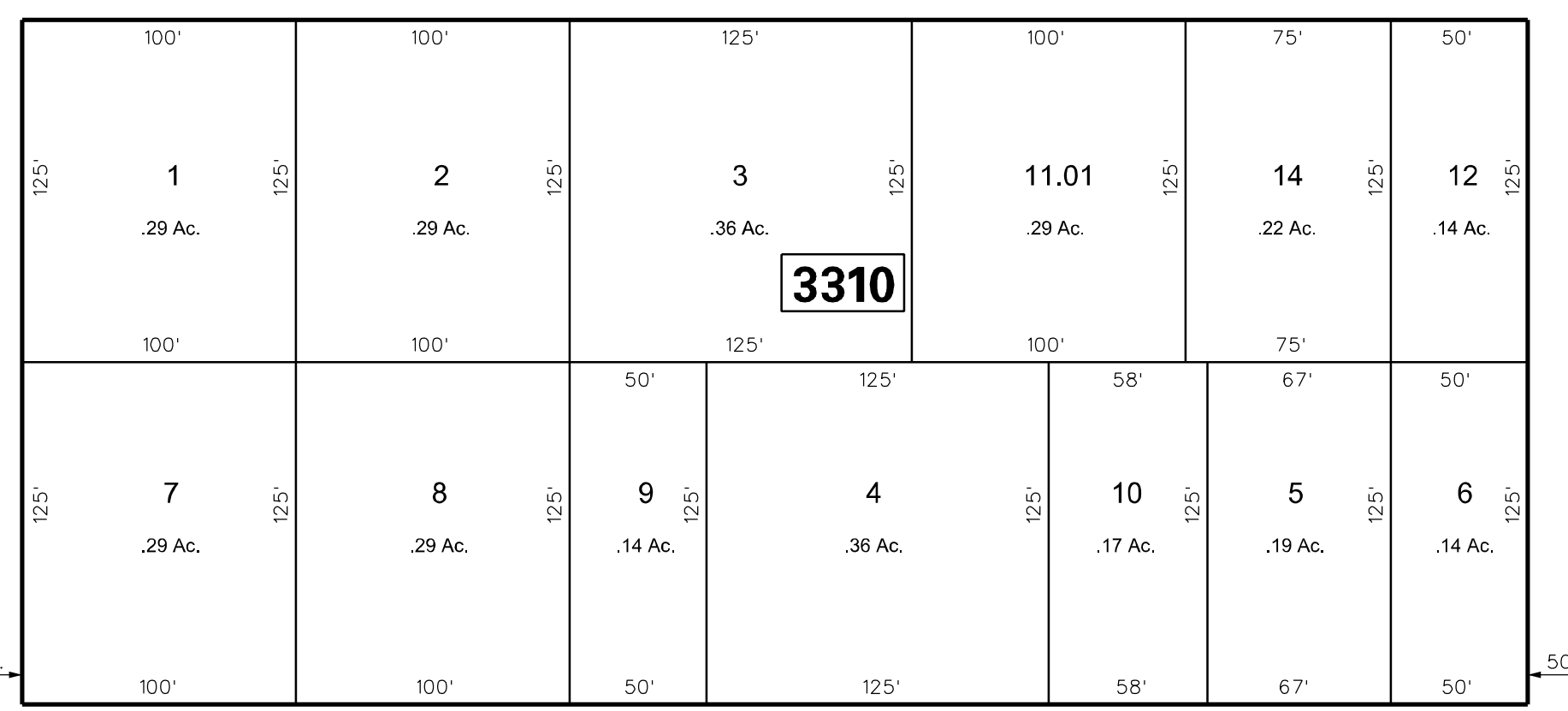
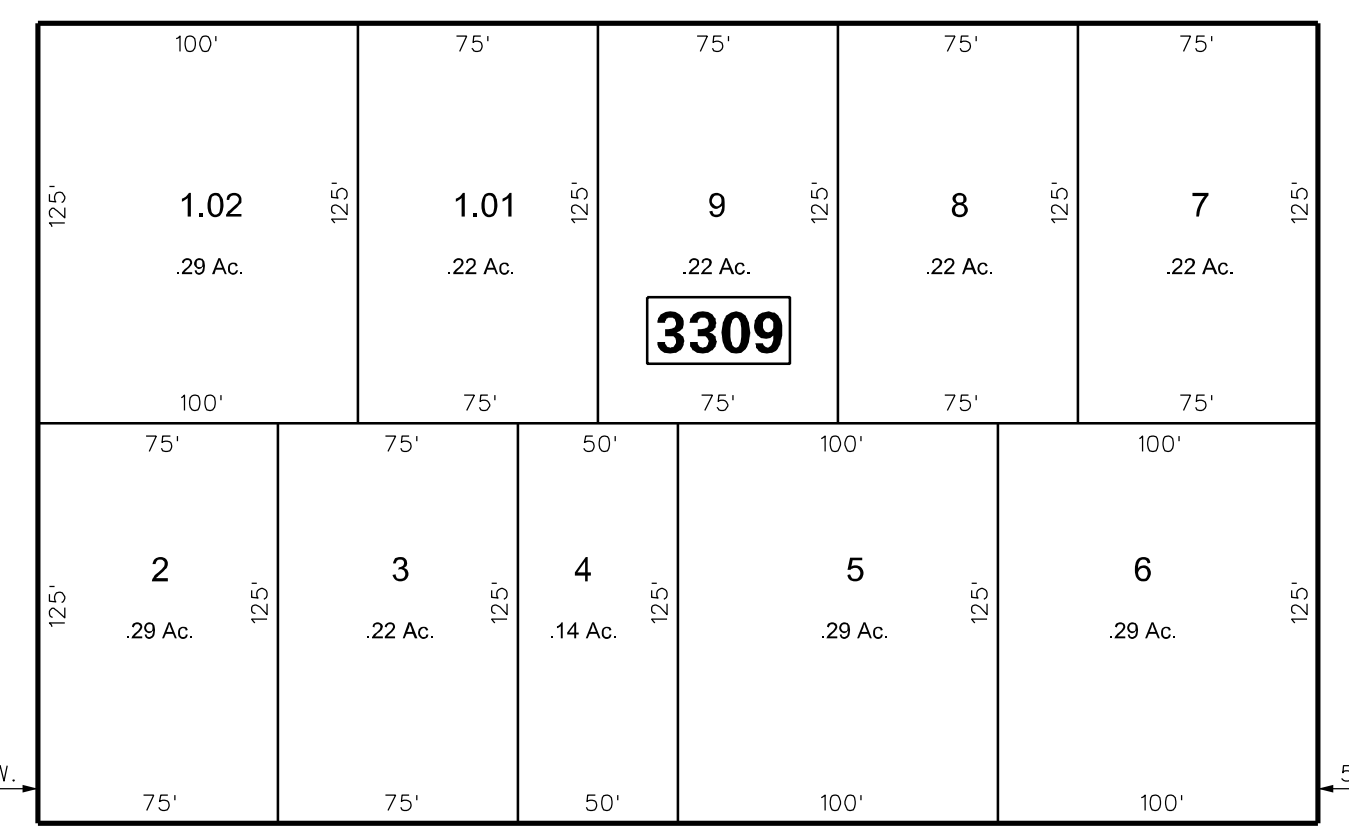
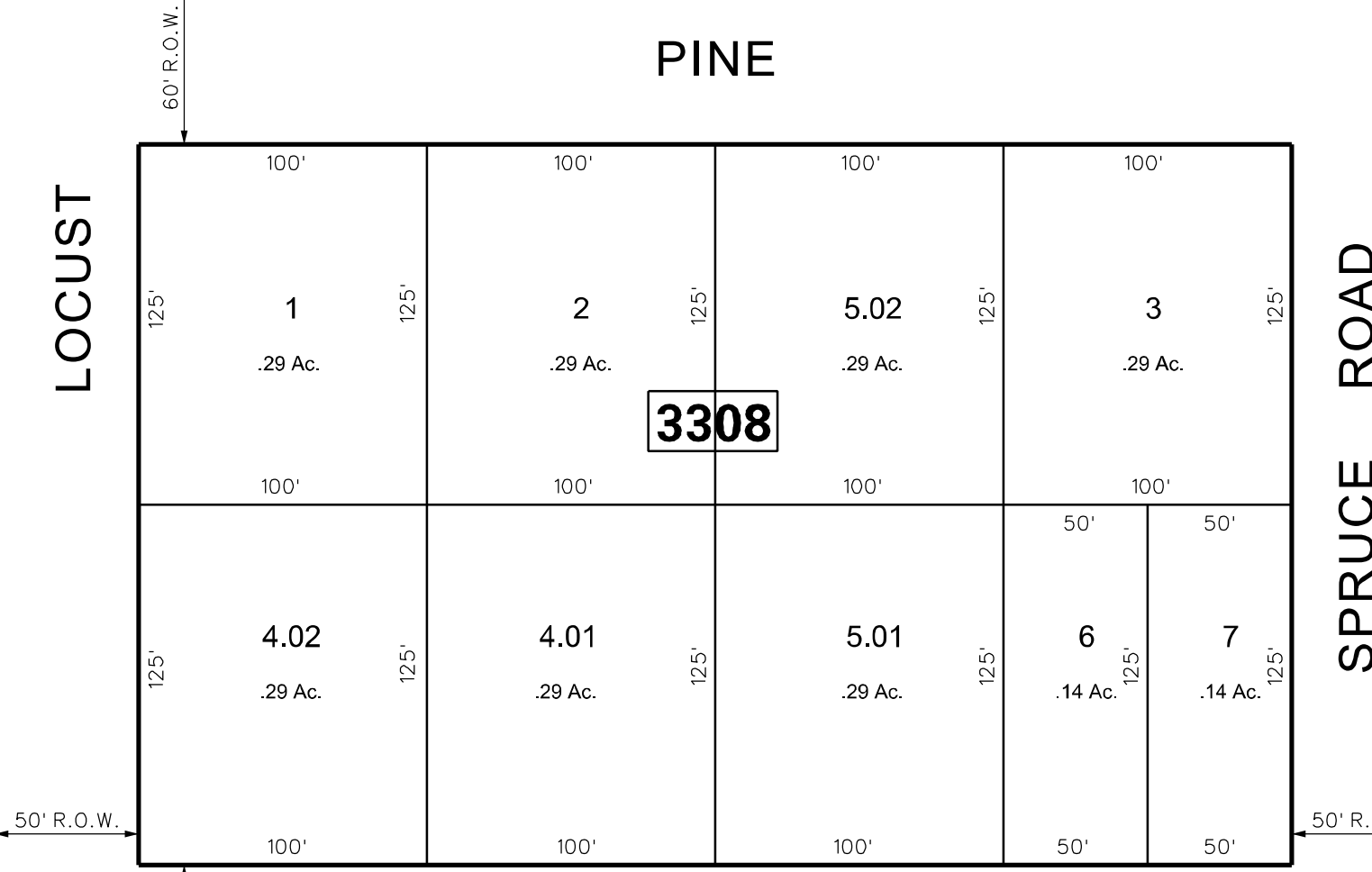


SEE SHEET 32.01



SEE SHEET 32.01

SEE SHEET 35



PINE

BOULEVARD

LOCUST

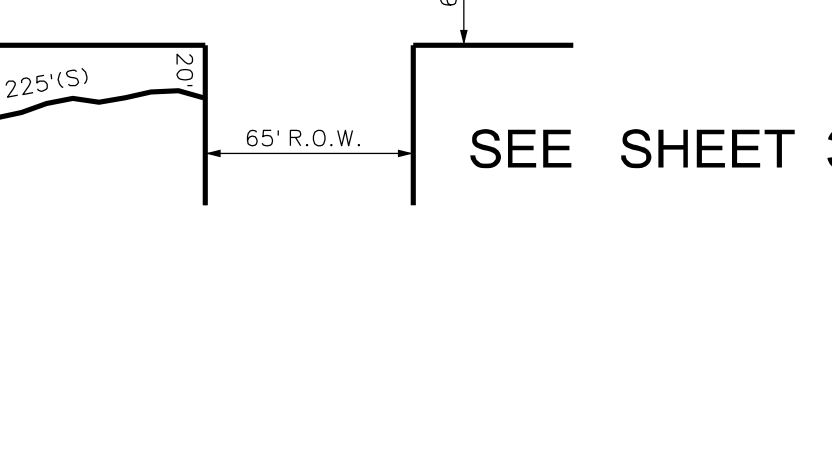
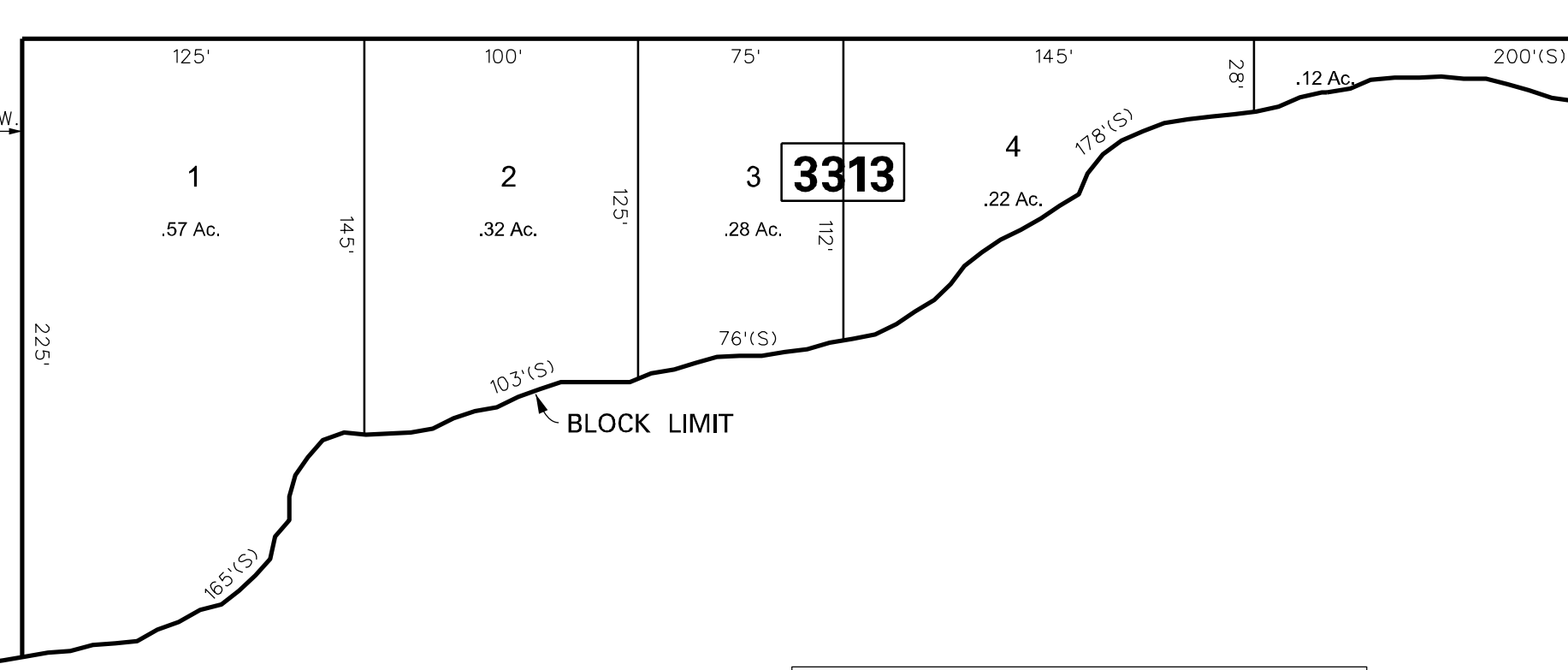
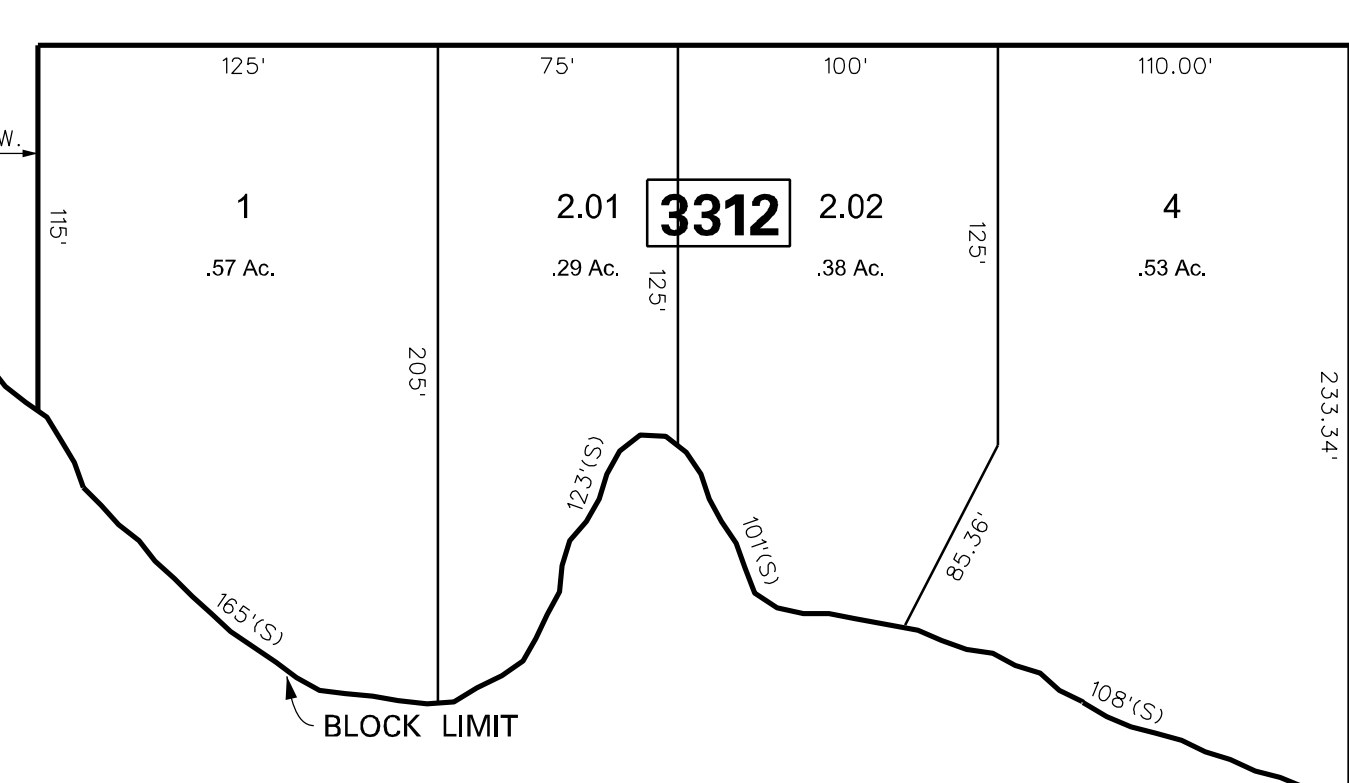
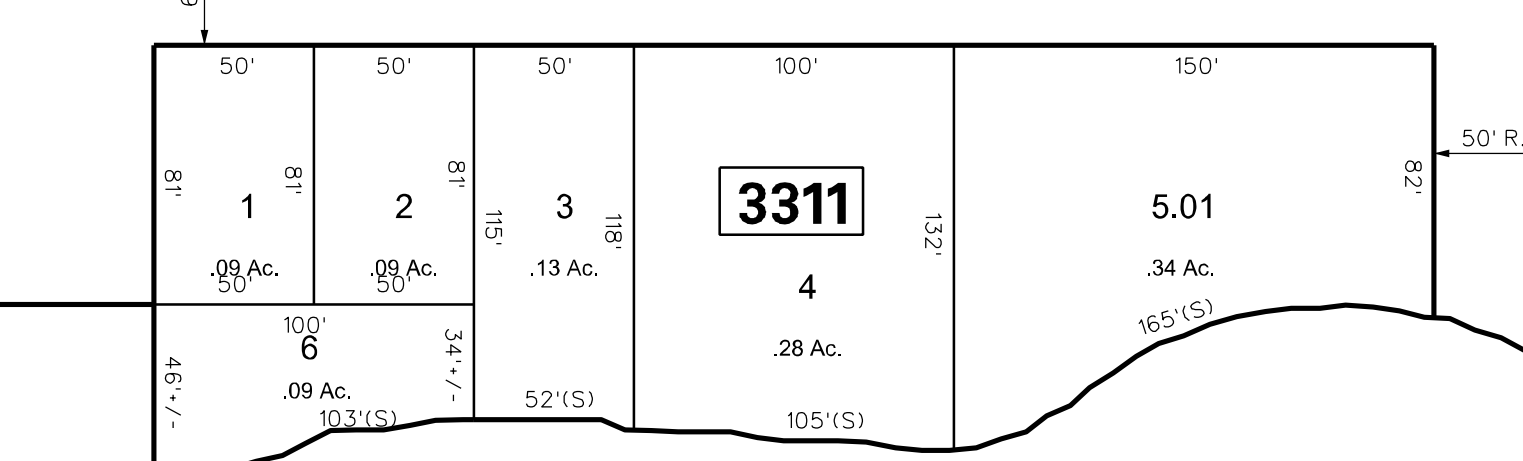
SPRUCE ROAD

BEECH

FALLS ROAD

TAUNTON

BOULEVARD



SEE SHEET 32.08

SUBDIVISION OF LAKE PINE

TAX MAP

MEDFORD TOWNSHIP

BURLINGTON COUNTY, NEW JERSEY
SCALE: 1"=60' DATE: JAN. 1967

C. KENNETH ANDERSON TOWNSHIP ENGINEER
MOUNT HOLLY, NEW JERSEY

SEE SHEET 34

NOTE:
ALL ACREAGE GIVEN ON THIS MAP
DOES NOT INCLUDE ROAD AREAS.
THIS SHEET IS A DIGITIZED COPY OF THE TAX MAP ORIGINALLY
PREPARED BY: C. KENNETH ANDERSON, JUNE 1967. THE ORIGINAL
IS ON FILE IN THE OFFICE OF THE TOWNSHIP ENGINEER

THIS SHEET WAS FORMALLY APPROVED ON MARCH 12, 1985
BY IVAN HAFTHOWITZ AND ASSIGNED SERIAL NUMBER 641

DATE	REVISION
8-05-08	DIGITIZED