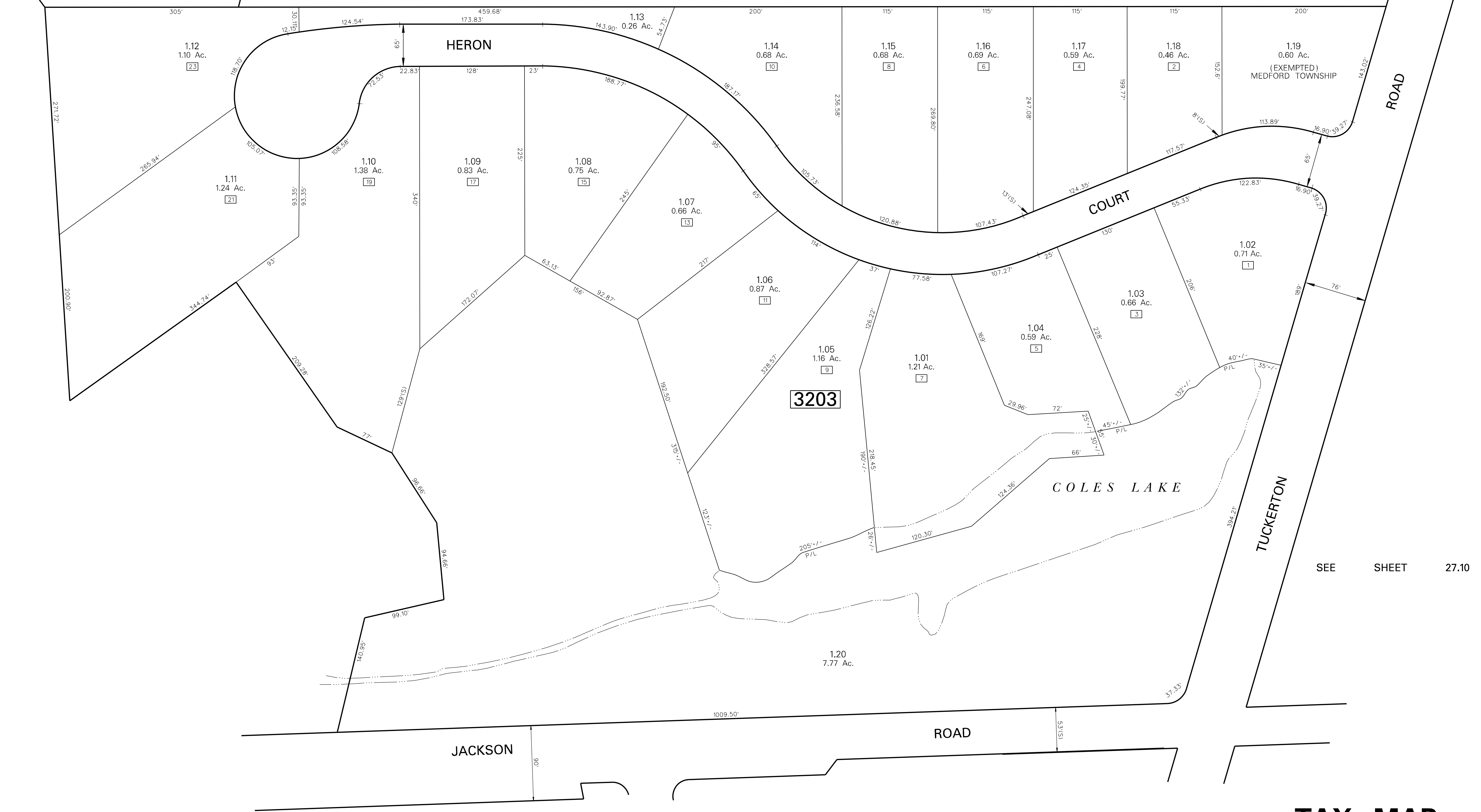
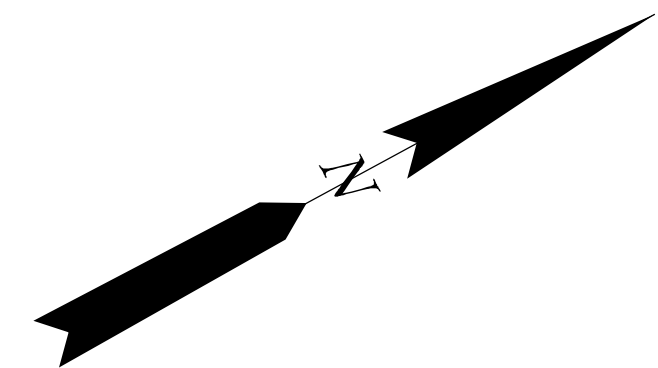


SEE SHEET 32.0

SEE SHEET 32.04



(EXEMPTED)  
MEDFORD TOWNSHIP

**3203**

SEE SHEET 27.10

DATE	REVISION
01-27-16	REVISED LOT NUMBERS 1.11 & 1.12
08-12-08	DIGITIZED TAX MAP SHEET 32.09

NOTES:  
 [1] DENOTES ADDRESS NUMBER

ALL ACREAGE GIVEN ON THIS MAP DOES NOT INCLUDE ROAD AREAS.

THIS SHEET IS A DIGITIZED COPY OF THE TAX MAP ORIGINALLY PREPARED BY: HARRY O. BATEMAN, THE ORIGINAL IS ON FILE IN THE OFFICE OF THE TOWNSHIP ENGINEER

**TAX MAP**  
**MEDFORD TOWNSHIP**  
 BURLINGTON COUNTY, NEW JERSEY  
 SCALE: 1" = 60' DATE: DEC. 1987  
 HARRY O. BATEMAN ENGINEER  
 MOUNT LAUREL, NEW JERSEY

THIS SHEET WAS FORMALLY APPROVED ON MARCH 12, 1985 BY IVAN HANFTHOWITZ AND ASSIGNED SERIAL NUMBER 641