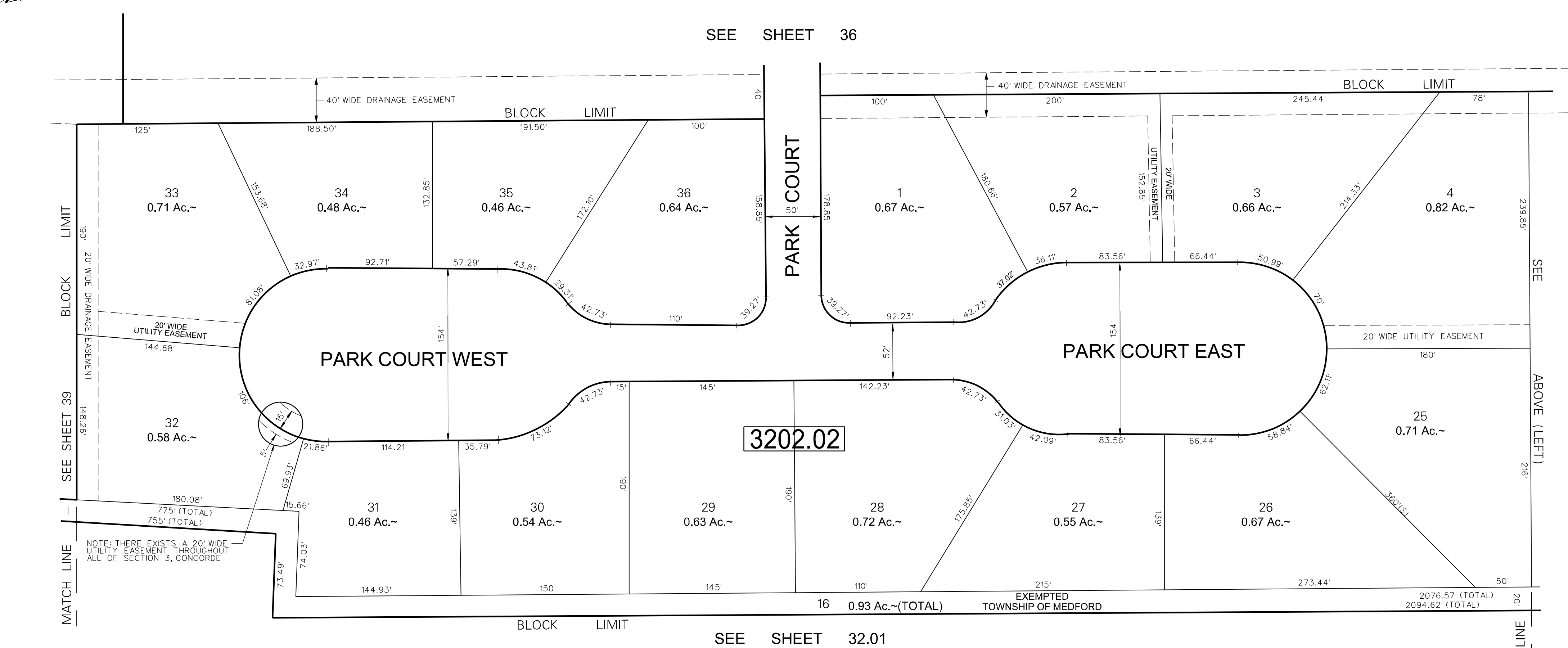


THIS SHEET WAS FORMALLY APPROVED ON MARCH 12, 1985 BY IVAN HAFTHOWITZ AND ASSIGNED SERIAL NUMBER 641

NOTE: THERE EXISTS A 20' WIDE UTILITY EASEMENT (10' EACH SIDE OF THE R.O.W.) THROUGH SECTION 1, CONCORDE



NOTES:
 LOTS 5 THROUGH 24 BLOCK 3202A REFER TO FINAL PLAN OF CONCORDE, SECTION 1. LOTS 1 THROUGH 4 & LOTS 25 THROUGH 36 BLOCK 3202A REFER TO FINAL PLAN OF CONCORDE, SECTION 3.
 ALL ACREAGE GIVEN ON THIS MAP DOES NOT INCLUDE ROAD AREAS.
 THIS SHEET IS A DIGITIZED COPY OF THE TAX MAP ORIGINALLY PREPARED BY: C. KENNETH ANDERSON, THE ORIGINAL IS ON FILE IN THE OFFICE OF THE TOWNSHIP ENGINEER

TAX MAP
MEDFORD TOWNSHIP
 BURLINGTON COUNTY, NEW JERSEY
 SCALE: 1"=60' DATE: MAY 1978
 C. KENNETH ANDERSON TOWNSHIP ENGINEER
 MOUNT HOLLY, NEW JERSEY

DATE	REVISION
8-11-88	DIGITIZED TAX MAP SHEET 32.07
9-1-88	BT.M.P.-GENERAL REVISION