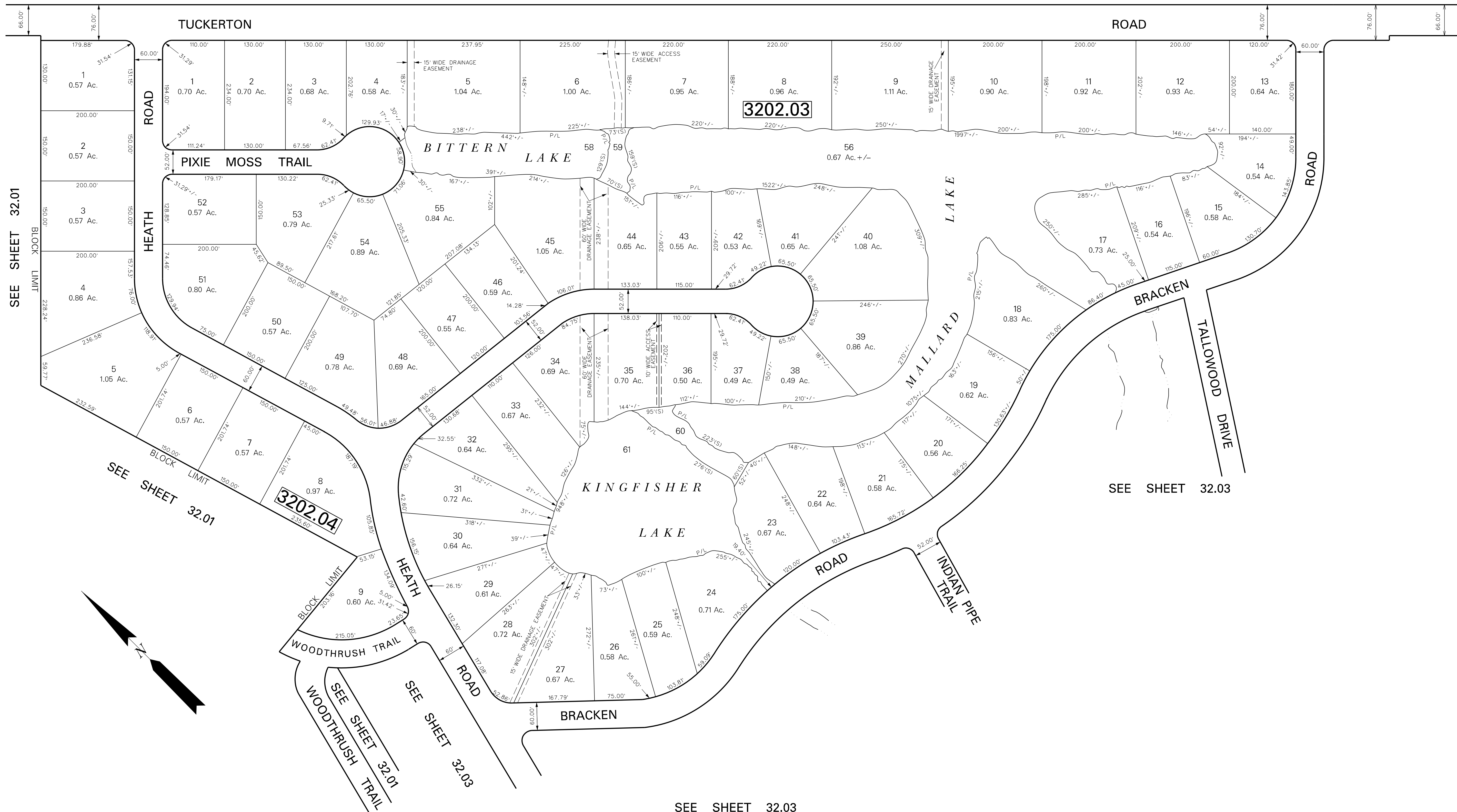


SEE SHEET 27.01

SEE SHEET 27.01



NOTES:

LOT AND BLOCK NUMBERS REFER TO WALTONKILL SECTION ONE EXCEPT LOTS 5-27 BLOCK 3202.11 WHICH ARE FROM WALTONKILL SECTION TWO

ALL ACREAGE GIVEN ON THIS MAP DOES NOT INCLUDE ROAD AREAS.

THIS SHEET IS A DIGITIZED COPY OF THE TAX MAP ORIGINALLY PREPARED BY: C. KENNETH ANDERSON, THE ORIGINAL IS ON FILE IN THE OFFICE OF THE TOWNSHIP ENGINEER

THIS SHEET WAS FORMALLY APPROVED ON MARCH 12, 1985 BY IVAN HAFTHOWITZ AND ASSIGNED SERIAL NUMBER 641

**TAX MAP**  
**MEDFORD TOWNSHIP**  
 BURLINGTON COUNTY, NEW JERSEY  
 SCALE: 1" = 100' DATE: MAR. 1970  
 C. KENNETH ANDERSON TOWNSHIP ENGINEER  
 MOUNT HOLLY, NEW JERSEY

REVISION	DATE	REVISION	DATE