

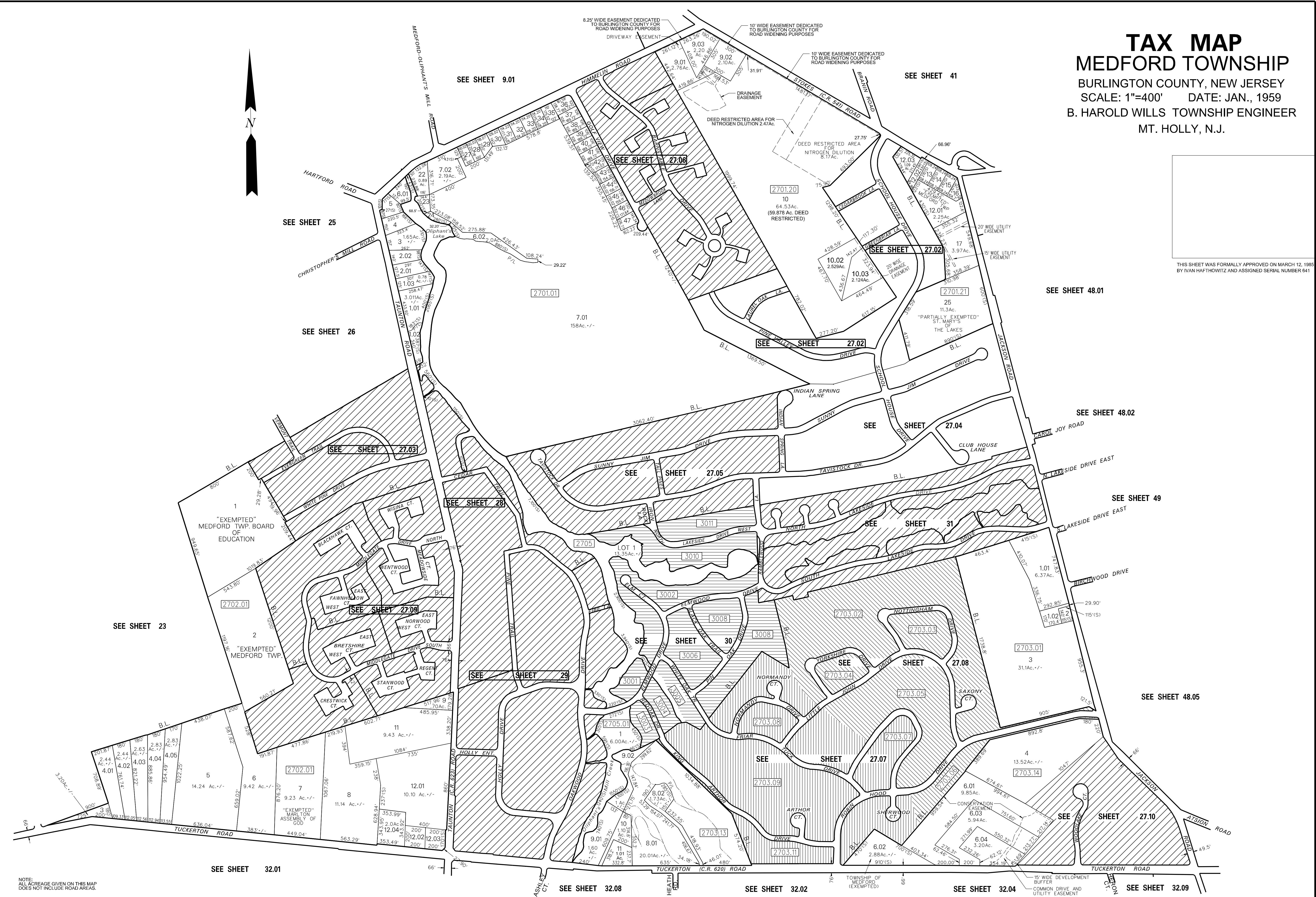
TAX MAP

MEDFORD TOWNSHIP

BURLINGTON COUNTY, NEW JERSEY
 SCALE: 1"=400' DATE: JAN., 1959
 B. HAROLD WILLS TOWNSHIP ENGINEER
 MT. HOLLY, N.J.

THIS SHEET WAS FORMALLY APPROVED ON MARCH 12, 1985
 BY IVAN HATHOWITZ AND ASSIGNED SERIAL NUMBER 641

DATE	REVISION
02/07/05	SUBDIVIDED LOT 9.01 & LOT 10 BLOCK 2701.20
11/30/01	DIGITIZED ORIG. TAX MAP
11/26/01	SUBDIVIDED BLK. 2701.20, LOT 9 TO 9.01 & 9.02 BLK. 2701.20
11/24/96	ADDED EASET LOT 8.0 BLK. 2701.01
9/6/96	UTILITY EASEMENT IN LOT 17 BLOCK 2701.21
9/28/94	REVISD LOT 6.01 BLK. 2701.01
17/83	CONSOLIDATED LOTS 12.03, 12.04 BLK. 2701.21
9/28/84	ADDED EASEMENTS LOTS 2.02, 9, 12.03 BLK. 2702.01
1/22/83	REVISD LOT 1.01 BLOCK 2703.01
3/30/89	REVISD LOT 5 BLOCK 2701.01
3/15/89	ELIMINATED DEER PATH FROM SHEET 27.03
3/25/86	BLOCK 2703.01 LOT 1 SUBDIVIDED TO LOTS 1.01, 1.02
DATE	REVISION
3/25/86	CHANGED TO MIDDLEGATE DR. NORTH & SOUTH
12/2/85	SPLIT OFF LOT 12.04 FROM 12.01 BLK. 2702.01
10/24/84	REVISIONS
4/12/84	UTILITY EASEMENT IN LOT 17 BLOCK 2701.21
10/12/83	CONSOLIDATE LOTS 17 & 18 BLOCK 2701.21 TO LOT 17
9/1/83	GENERAL REVISION BY TWT
1/12/81	EXTENDED BLK. 2701 TO BARNSTABLE DR.
12/8/80	SPLIT OFF LOT 7A-1 FROM 7A BLK. 2703
3/17/80	ADDED TAUNTON TRACE SECTION 3 & 4 SHEET 27H
8/28/79	SPLIT OFF LOT 5A FROM LOT 5 BLK. 2703
DATE	REVISION
4/25/79	ADDED TAUNTON TRACE SECTION 2
8/21/78	ADDED ONTO "EXEMPTED" MEDFORD TWP. BOARD OF EDUCATION
12/22/77	REVD DIMENSIONS LOT 6 BLK. 2702
7/29/77	ADDED SEE SHEET 27H BLK. 2702 TAUNTON TRACE SEC. 1
6/21/77	ADDED MEDFORD COMMONS SEC. 2 & 3
10/16/75	ADDED SECTION 27 F & 27G SHERWOOD FOREST SUBDIVISION
9/5/75	SPLIT OFF LOT 18 FROM BLK. 2701 LOT 1
7/11/75	SPLIT OFF LOTS 19A, 12B, 12C OF BLK. 2701 LOT 12
1/16/75	SPLIT OFF LOTS 8A, 8B OF BLK. 2701 LOT 8
DATE	REVISION
6/24/74	SPLIT OFF LOT 1A FROM LOT 1 BLK. 2702
6/6/74	REMOVED BLOCK 2701 LOT 19
1/18/73	ASSIGNED LOT 18 BLOCK 2701
8/5/73	LOT 4 BLK. 2703 WAS 12.8AC. +/-
4/9/73	ADDED SECTIONS 8 & 9 DEERBROOK
8/27/72	ADDED SECTIONS 2 & 4 (DEERBROOK)
3/28/72	ADDED SECTION 2703 SPLIT OFF AC.
11/19/71	LOT 4 BLOCK 2701 DEERBROOK SEC. 6 & 7
12/9/70	



NOTE:
 ALL ACREAGE GIVEN ON THIS MAP
 DOES NOT INCLUDE ROAD AREAS.