

DATE	NAME OF P.L.S.	LICENSE # OF P.L.S.
9/03/08	PATRICK S. VITARELLI	N.J.P.L.S. #27895

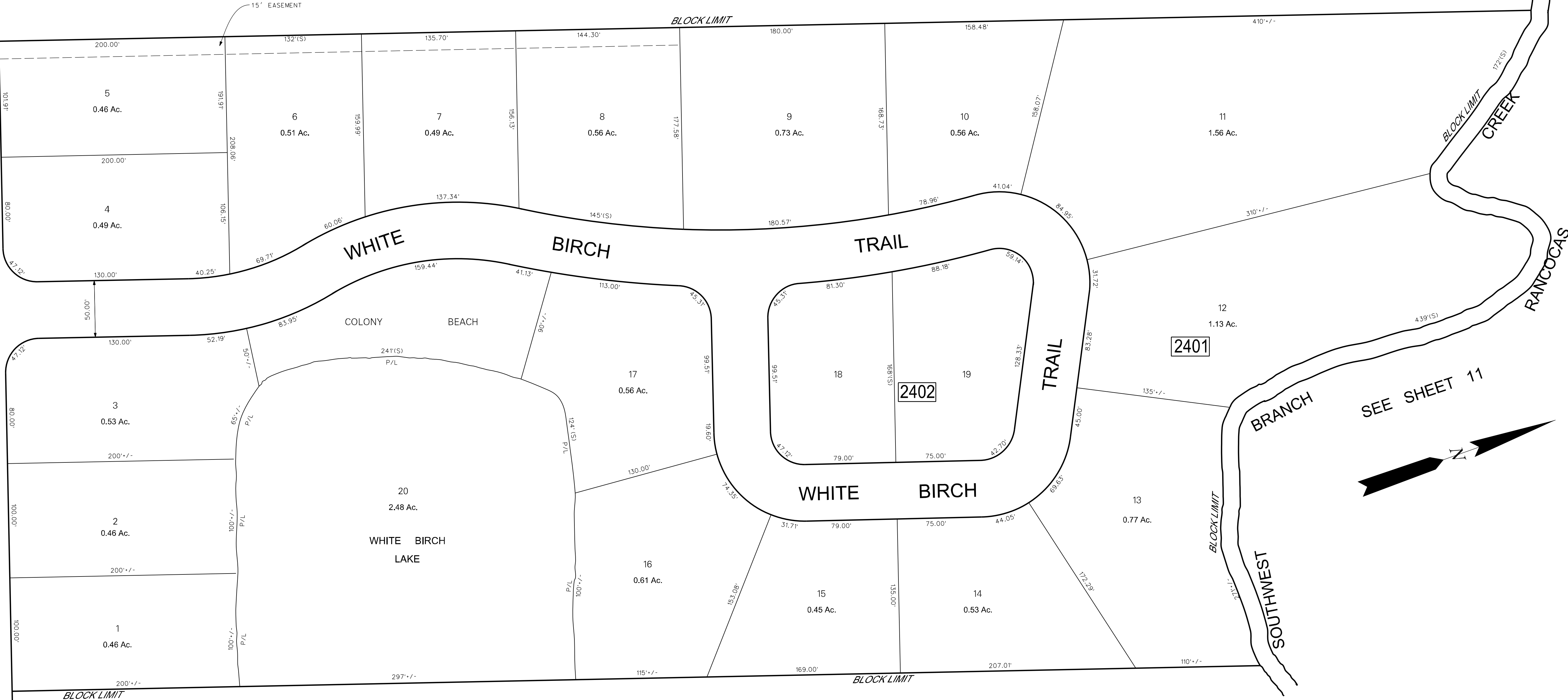
SEE SHEET 9.01

SEE SHEET 22

MAINE TRAIL

SEE SHEET 26

ROAD  
MILL  
CHRISTOPHER'S



SEE SHEET 25

PLAN OF WHITE BIRCH

**TAX MAP**  
**MEDFORD TOWNSHIP**  
 BURLINGTON COUNTY, NEW JERSEY  
 SCALE: 1"=50' DATE: JAN., 1959  
 B. HAROLD WILLS TOWNSHIP ENGINEER  
 MT. HOLLY, NEW JERSEY

NOTE:  
 ALL ACREAGE GIVEN ON THIS MAP  
 DOES NOT INCLUDE ROAD AREAS.

THIS SHEET IS A DIGITIZED COPY OF THE TAX MAP ORIGINALLY PREPARED  
 BY B. HAROLD WILLS. DATE: JAN., 1959. THE ORIGINAL APPROVED MAP IS ON  
 FILE IN THE OFFICE OF THE TOWNSHIP ENGINEER.

THIS SHEET WAS FORMALLY APPROVED ON MARCH 12, 1985  
 BY IVAN HAFTHOWITZ AND ASSIGNED SERIAL NUMBER 641