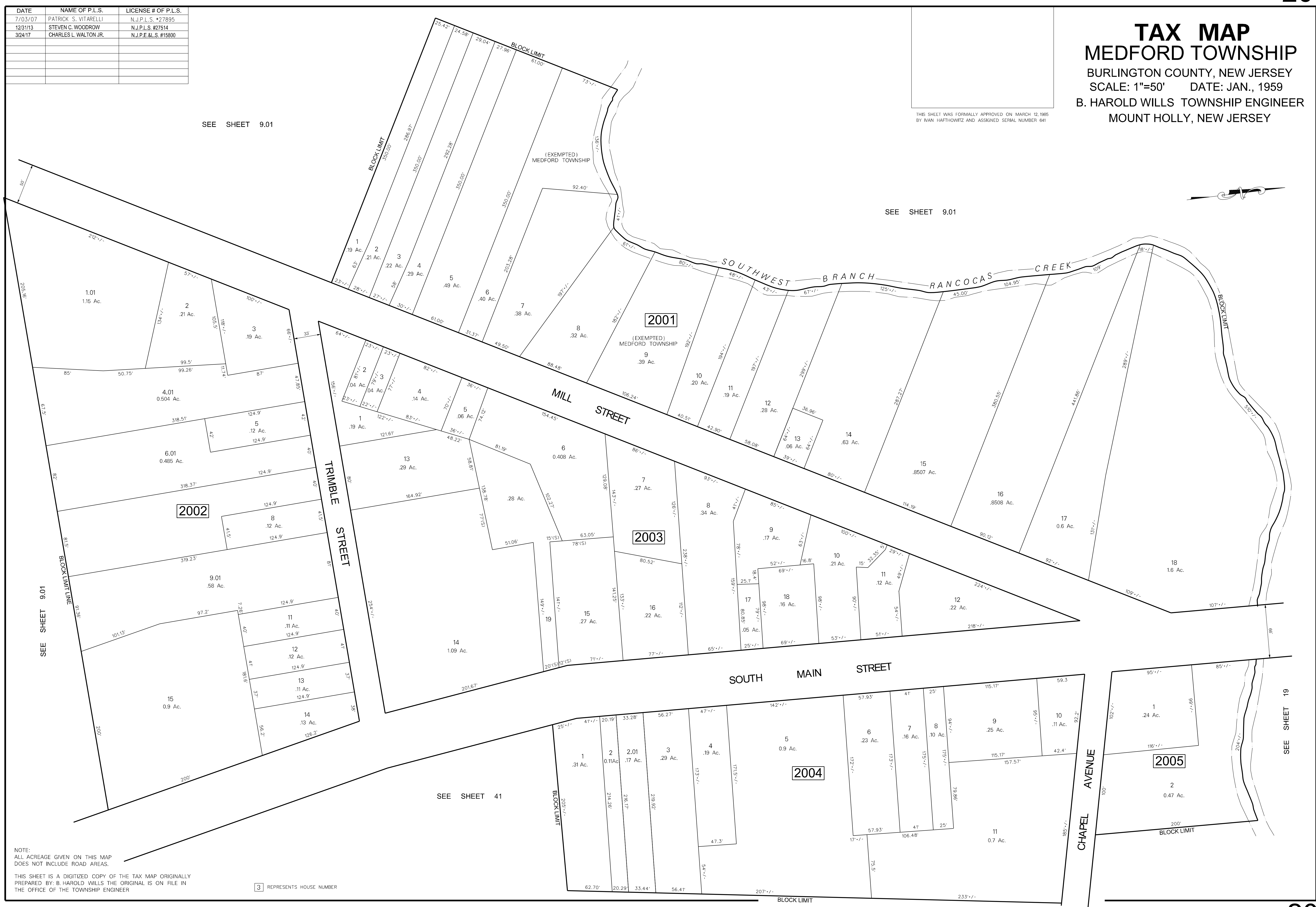


TAX MAP
MEDFORD TOWNSHIP
 BURLINGTON COUNTY, NEW JERSEY
 SCALE: 1"=50' DATE: JAN., 1959
 B. HAROLD WILLS TOWNSHIP ENGINEER
 MOUNT HOLLY, NEW JERSEY

DATE	NAME OF P.L.S.	LICENSE # OF P.L.S.
7/03/07	PATRICK S. VITARELLI	N.J.P.L.S. #27895
12/31/13	STEVEN C. WOODROW	N.J.P.L.S. #27514
3/24/17	CHARLES L. WALTON JR.	N.J.P.E.&L.S. #15800

THIS SHEET WAS FORMALLY APPROVED ON MARCH 12, 1965
 BY IVAN HAFTHOWITZ AND ASSIGNED SERIAL NUMBER 641



SEE SHEET 9.01

SEE SHEET 9.01

SEE SHEET 9.01

SEE SHEET 41

SEE SHEET 19

NOTE:
 ALL ACREAGE GIVEN ON THIS MAP
 DOES NOT INCLUDE ROAD AREAS.
 THIS SHEET IS A DIGITIZED COPY OF THE TAX MAP ORIGINALLY
 PREPARED BY: B. HAROLD WILLS THE ORIGINAL IS ON FILE IN
 THE OFFICE OF THE TOWNSHIP ENGINEER

[] REPRESENTS HOUSE NUMBER