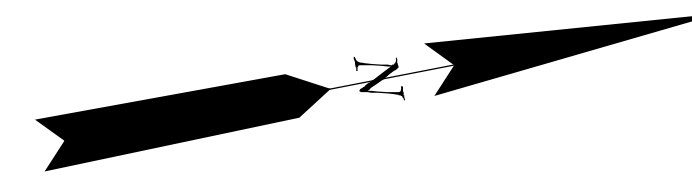


DATE	NAME OF P.L.S.	LICENSE # OF P.L.S.
12/31/13	STEVEN C. WOODROW	N.J.P.L.S. #21514
01/27/16	STEVEN C. WOODROW	N.J.P.L.S. #21514



SEE SHEET 9.01

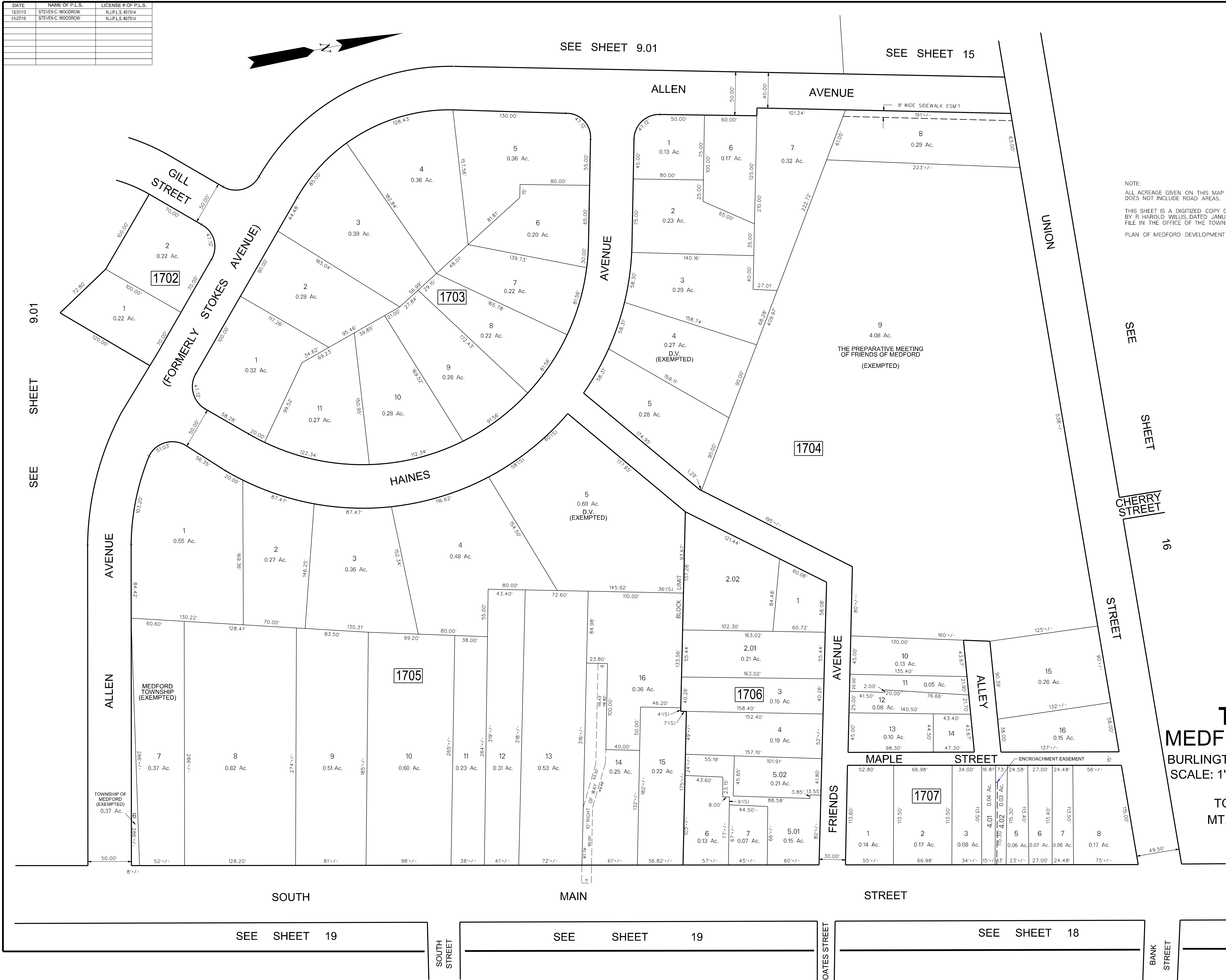
SEE SHEET 15

THIS SHEET WAS FORMALLY APPROVED ON MARCH 12, 1985
BY IVAN HAFTHOWITZ AND ASSIGNED SERIAL NUMBER 641

NOTE:
ALL ACREAGE GIVEN ON THIS MAP
DOES NOT INCLUDE ROAD AREAS.

THIS SHEET IS A DIGITIZED COPY OF THE TAX MAP ORIGINALLY PREPARED
BY R. HAROLD WILLIS, DATED JANUARY, 1959. THE ORIGINAL APPROVED MAP IS ON
FILE IN THE OFFICE OF THE TOWNSHIP ENGINEER.

PLAN OF MEDFORD DEVELOPMENT COMPANY



TAX MAP
MEDFORD TOWNSHIP
BURLINGTON COUNTY, NEW JERSEY
SCALE: 1"=50' DATE: JAN., 1959
B. HAROLD WILLIS
TOWNSHIP ENGINEER
MT. HOLLY, NEW JERSEY

SEE SHEET 9.01

SEE SHEET 16

SEE SHEET 19

SEE SHEET 19

SEE SHEET 18