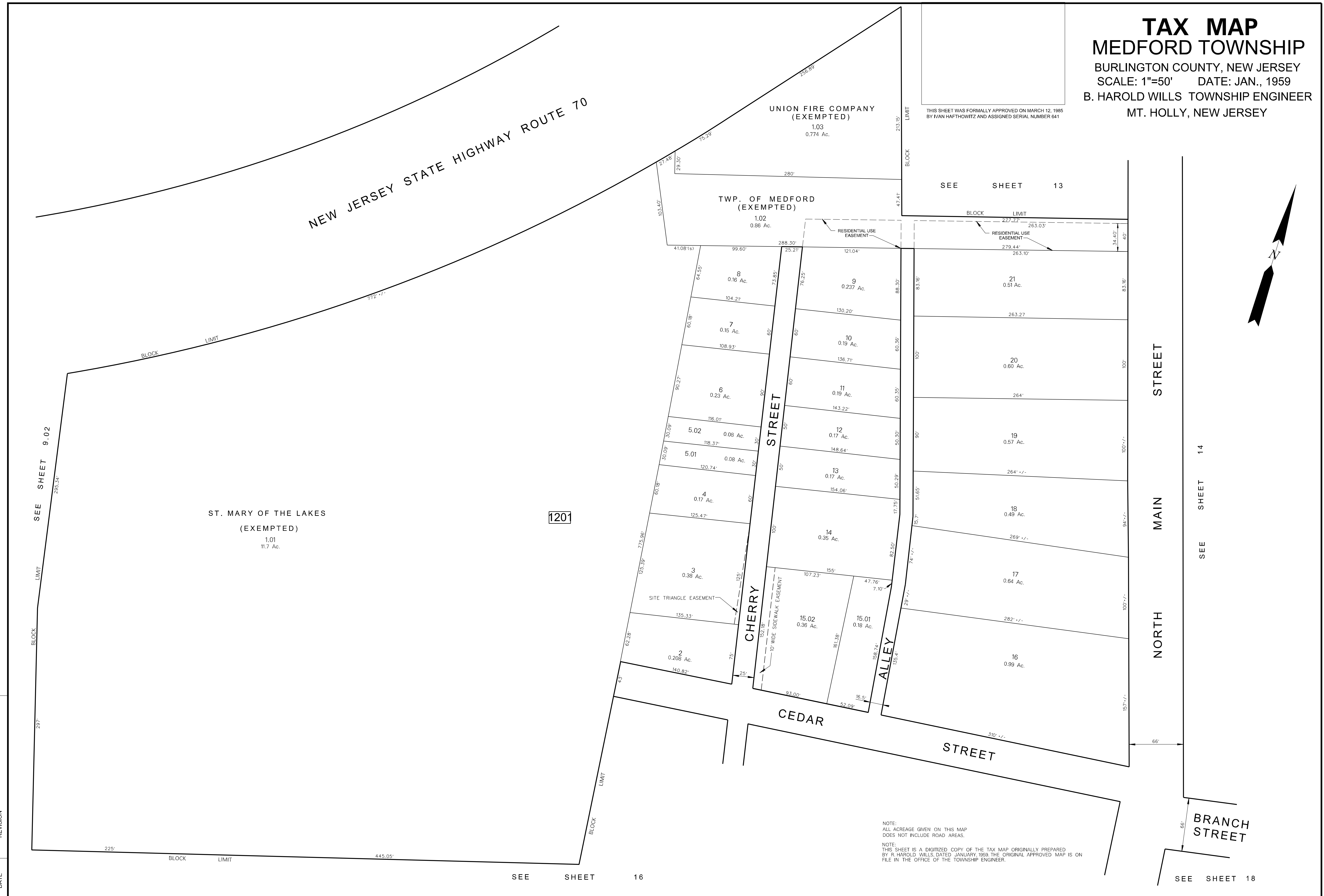
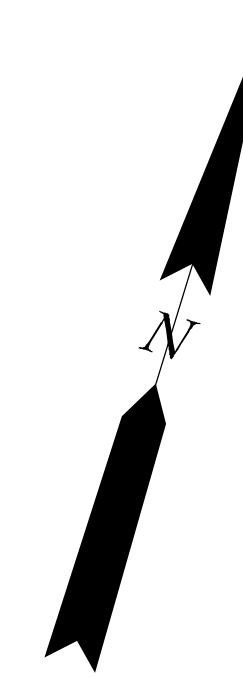


TAX MAP
MEDFORD TOWNSHIP
 BURLINGTON COUNTY, NEW JERSEY
 SCALE: 1"=50' DATE: JAN., 1959
 B. HAROLD WILLS TOWNSHIP ENGINEER
 MT. HOLLY, NEW JERSEY

THIS SHEET WAS FORMALLY APPROVED ON MARCH 12, 1985
 BY IVAN HAFTHOWITZ AND ASSIGNED SERIAL NUMBER 641

SEE SHEET 13



NOTE:
 ALL ACREAGE GIVEN ON THIS MAP
 DOES NOT INCLUDE ROAD AREAS.

NOTE:
 THIS SHEET IS A DIGITIZED COPY OF THE TAX MAP ORIGINALLY PREPARED
 BY R. HAROLD WILLS, DATED JANUARY, 1959. THE ORIGINAL APPROVED MAP IS ON
 FILE IN THE OFFICE OF THE TOWNSHIP ENGINEER.

DATE	REVISION
9-30-03	MINOR SUBDIVISION BLK. 1201 LOTS 2 & 3
7-21-03	ADDED EASEMENT LOT 1.02 BLK. 1201
7-27-01	ADDED EASEMENT LOT 1.02 BLK. 1201
10-2-00	REVISED ACREAGE LOT 9, BLOCK 1201
7-1-00	CONSOLIDATED LOTS 15.02 & 15.03, BLOCK 1201
2-28-91	SUBDIVISION BLOCK 1201, LOTS 15.02 & 15.03
9-1-83	GENERAL REVISION BY L.M.T.
6-24-74	SPLIT OFF LOT 1B FROM LOT 1A, BLOCK 1201
10-25-71	ADDED LOT 1A TO LOT 1, BLOCK 1201 & CHANGED ACREAGE