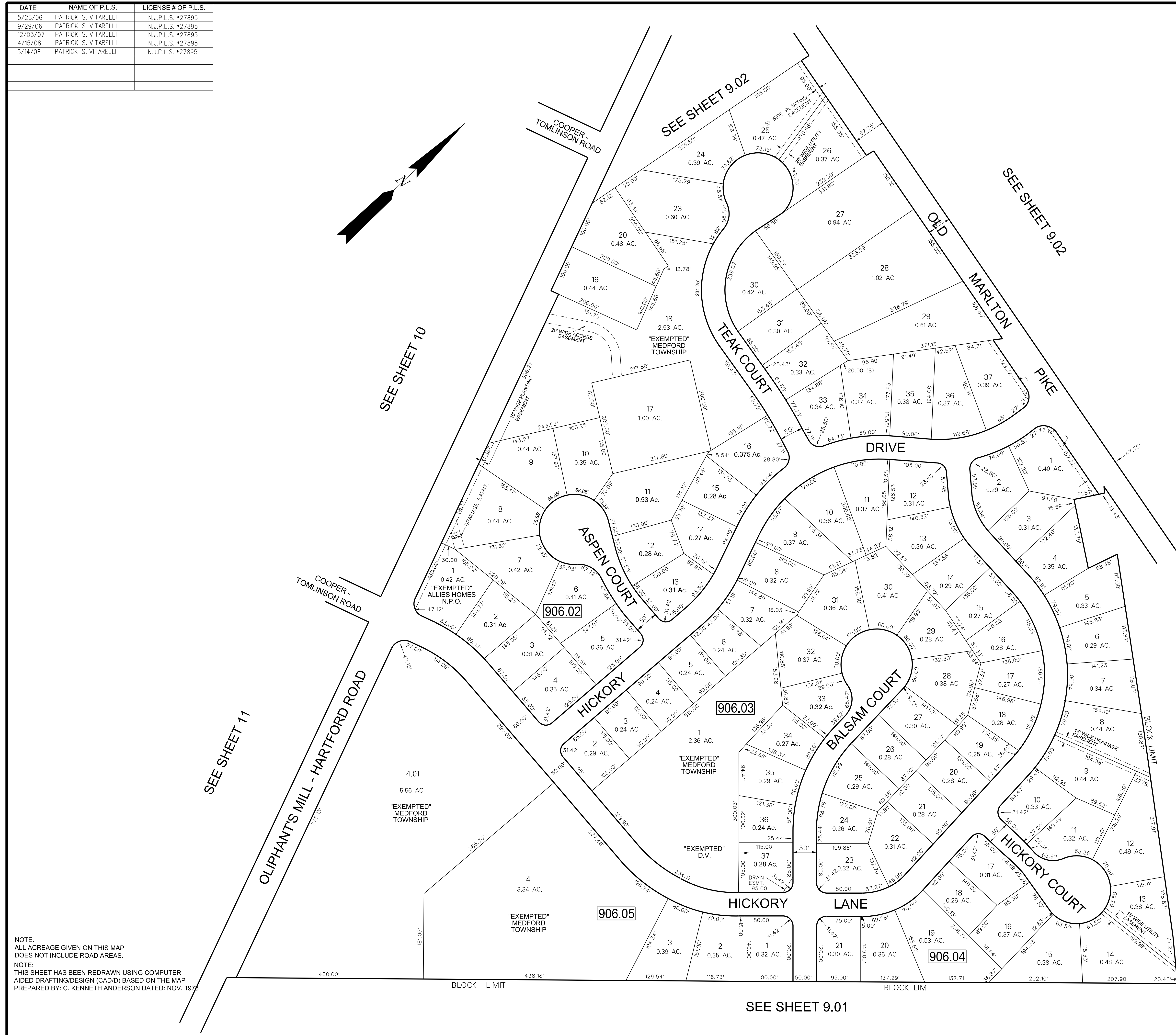


DATE	NAME OF P.L.S.	LICENSE # OF P.L.S.
5/25/06	PATRICK S. VITARELLI	N.J.P.L.S. #27895
9/29/06	PATRICK S. VITARELLI	N.J.P.L.S. #27895
12/03/07	PATRICK S. VITARELLI	N.J.P.L.S. #27895
4/15/08	PATRICK S. VITARELLI	N.J.P.L.S. #27895
5/14/08	PATRICK S. VITARELLI	N.J.P.L.S. #27895

THIS SHEET WAS FORMALLY APPROVED ON MARCH 12, 1985
BY IVAN HAFTHOWITZ AND ASSIGNED SERIAL NUMBER 641



SEE SHEET 11

SEE SHEET 10

SEE SHEET 9.02

SEE SHEET 9.02

SEE SHEET 9.01

SEE SHEET 9.01

NOTE:
ALL ACREAGE GIVEN ON THIS MAP
DOES NOT INCLUDE ROAD AREAS.
NOTE:
THIS SHEET HAS BEEN REDRAWN USING COMPUTER
AIDED DRAFTING/DESIGN (CAD/D) BASED ON THE MAP
PREPARED BY: C. KENNETH ANDERSON DATED: NOV. 1978

TAX MAP
MEDFORD TOWNSHIP
BURLINGTON COUNTY, NEW JERSEY
SCALE: 1"=100' DATE: NOV, 1978
C. KENNETH ANDERSON
TOWNSHIP ENGINEER
MT HOLLY, NJ