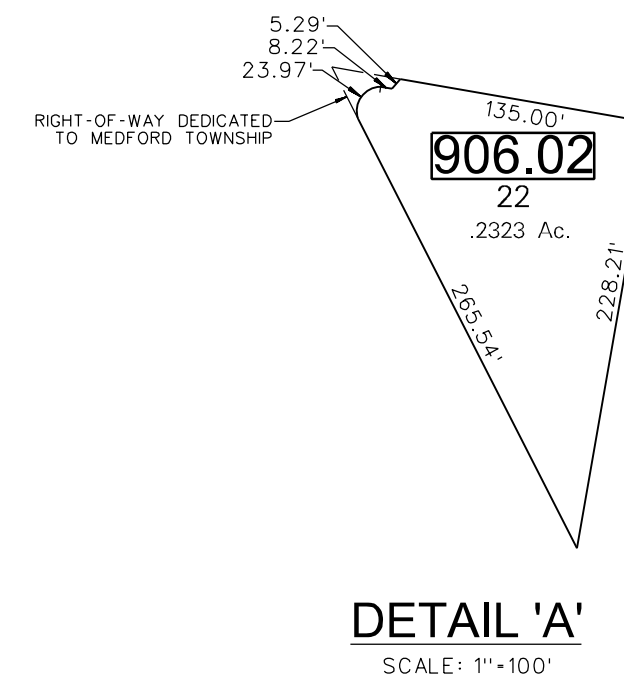
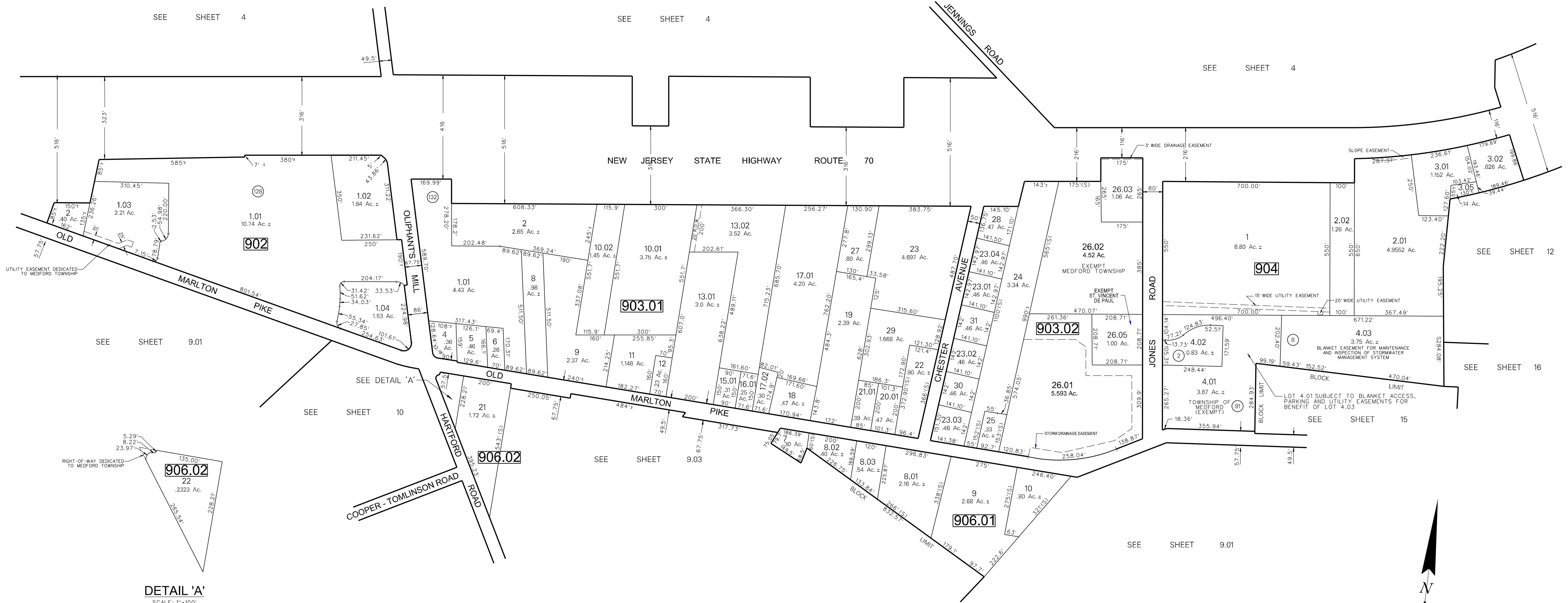


DATE	NAME OF P.L.S.	LICENSE # OF P.L.S.
6/05/08	PATRICK S. VITARELLI	N.J.P.L.S. #27895
12/02/09	PATRICK S. VITARELLI	N.J.P.L.S. #27895
1/13/10	PATRICK S. VITARELLI	N.J.P.L.S. #27895
6/11/10	PATRICK S. VITARELLI	N.J.P.L.S. #27895
11/10/10	PATRICK S. VITARELLI	N.J.P.L.S. #27895
12/31/13	STEVEN C. WOODROW	N.J.P.L.S. #27514
1/27/16	STEVEN C. WOODROW	N.J.P.L.S. #27514
9/20/16	CHARLES L. WALTON, JR.	N.J.P.E.&L.S. #15800
12/21/17	CHARLES L. WALTON, JR.	N.J.P.E.&L.S. #15800



Ⓜ - ENCIRCLED NUMBER REPRESENTS HOUSE NUMBERS

NOTE:
ALL ACREAGE GIVEN ON THIS MAP DOES NOT INCLUDE ROAD AREAS.

NOTE:
THIS SHEET HAS BEEN REDRAWN USING COMPUTER AIDED DRAFTING/DESIGN (CAD/D) BASED ON THE MAP PREPARED BY: C. KENNETH ANDERSON DATED: APRIL 1967

THIS SHEET WAS FORMALLY APPROVED ON MARCH 12, 1965 BY IVAN HAFTHOWITZ AND ASSIGNED SERIAL NUMBER 641

TAX MAP
MEDFORD TOWNSHIP
 BURLINGTON COUNTY, NEW JERSEY
 SCALE: 1"=200' DATE: DEC., 2000
 PATRICK S. VITARELLI LICENSED LAND SURVEYOR No. 2789
 ENVIRONMENTAL RESOLUTIONS, INC.
 525 FELLOWSHIP ROAD, SUITE 300, MT. LAUREL, NJ