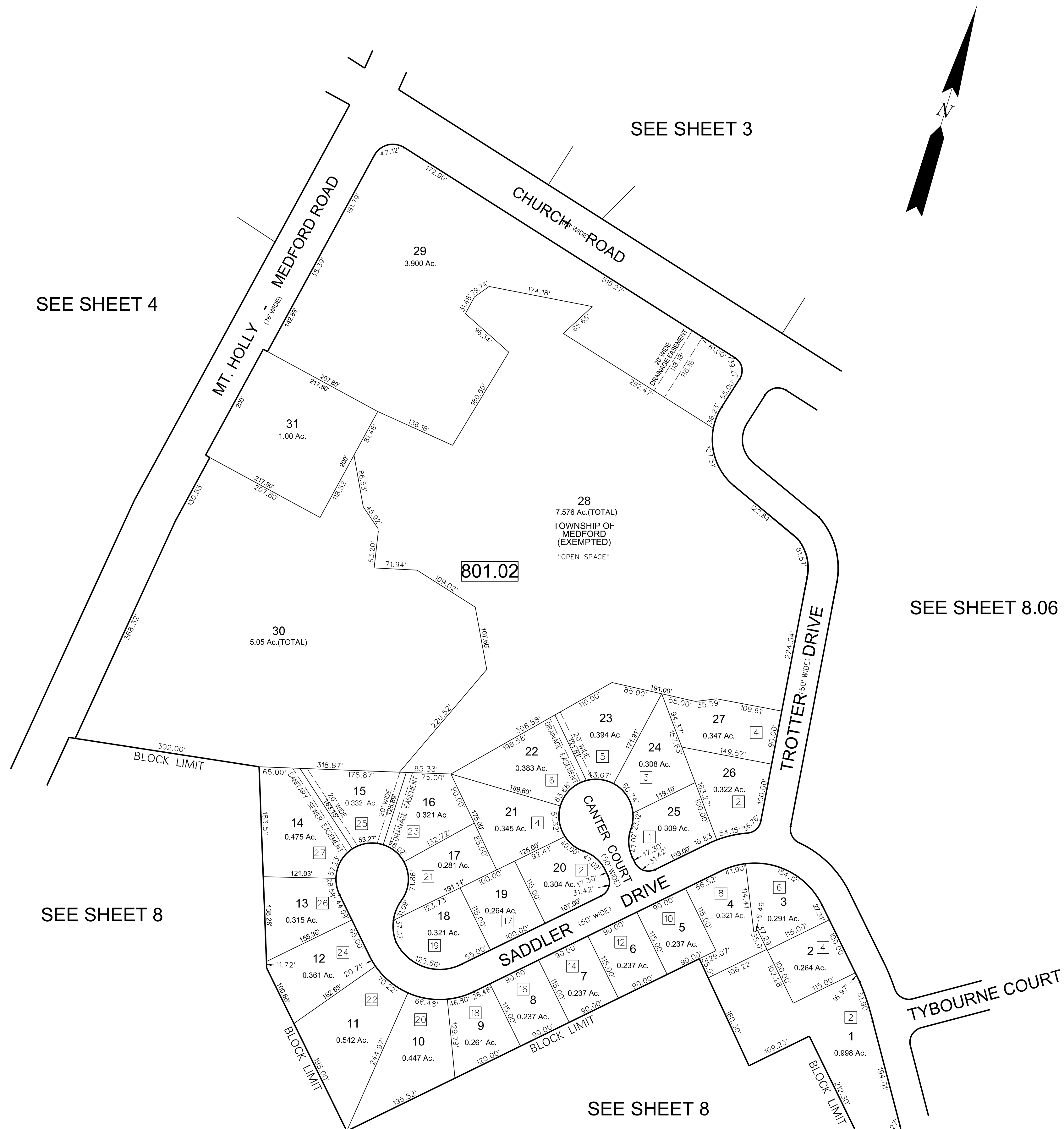


DATE	NAME OF P.L.S.	LICENSE # OF P.L.S.
9/25/06	PATRICK S. VITARELLI	N.J.P.L.S. #27895
1/20/09	PATRICK S. VITARELLI	N.J.P.L.S. #27895



NOTE:  
ALL ACREAGE GIVEN ON THIS MAP  
DOES NOT INCLUDE ROAD AREAS.

NOTE:  
THIS SHEET HAS BEEN REDRAWN USING COMPUTER  
AIDED DRAFTING/DESIGN (CAD/D) BASED ON THE MAP  
PREPARED BY: HARRY O. BATEMAN N.J.P.L.S. #10123

NOTE:  
THE AREAS, BOUNDARIES AND DIMENSIONS, SHOWN ON THIS  
TAX MAP, ARE DERIVED FROM GROUND SURVEYS, AERIAL  
SURVEYS, AND RECORDED PLANS, MAPS, DEEDS, WILLS, AND  
ARE TO BE USED FOR ASSESSMENT PURPOSES ONLY.

THIS SHEET WAS FORMALLY APPROVED ON MARCH 12, 1985  
BY IVAN HAFTHOWITZ AND ASSIGNED SERIAL NUMBER 641

**TAX MAP**  
**MEDFORD TOWNSHIP**  
BURLINGTON COUNTY, NEW JERSEY  
SCALE: 1"=100' DATE: MAY, 2008  
PATRICK S. VITARELLI LICENSED LAND  
SURVEYOR No. 27895  
ENVIRONMENTAL RESOLUTIONS, INC.  
525 FELLOWSHIP ROAD, SUITE 300, MOUNT LAUREL, NJ