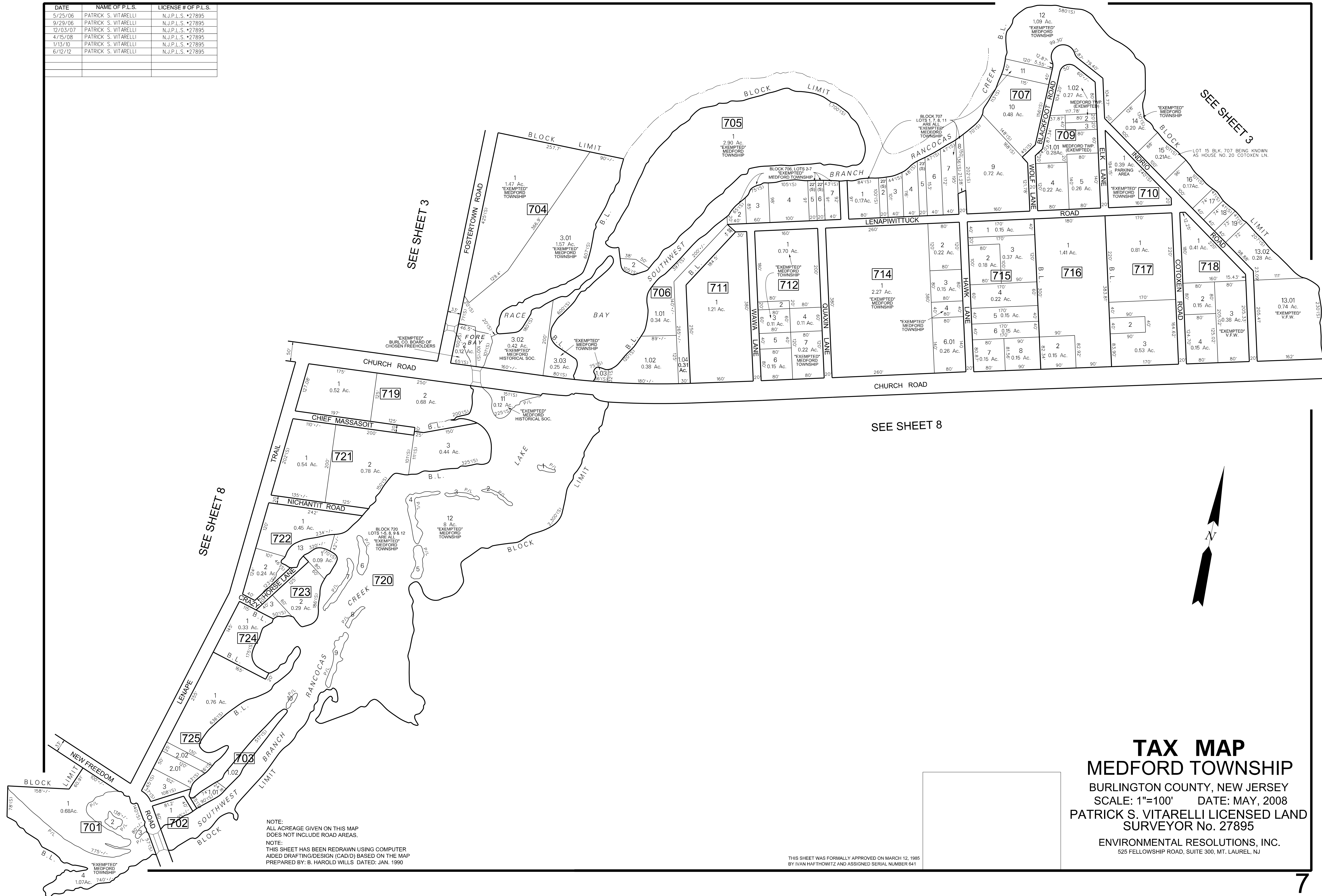


DATE	NAME OF P.L.S.	LICENSE # OF P.L.S.
5/25/06	PATRICK S. VITARELLI	N.J.P.L.S. #27895
9/29/06	PATRICK S. VITARELLI	N.J.P.L.S. #27895
12/03/07	PATRICK S. VITARELLI	N.J.P.L.S. #27895
4/15/08	PATRICK S. VITARELLI	N.J.P.L.S. #27895
1/13/10	PATRICK S. VITARELLI	N.J.P.L.S. #27895
6/12/12	PATRICK S. VITARELLI	N.J.P.L.S. #27895

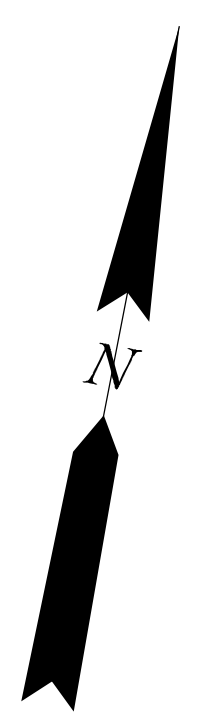


SEE SHEET 3

SEE SHEET 8

SEE SHEET 3

SEE SHEET 8



**TAX MAP**  
**MEDFORD TOWNSHIP**  
 BURLINGTON COUNTY, NEW JERSEY  
 SCALE: 1"=100' DATE: MAY, 2008  
 PATRICK S. VITARELLI LICENSED LAND SURVEYOR No. 27895  
 ENVIRONMENTAL RESOLUTIONS, INC.  
 525 FELLOWSHIP ROAD, SUITE 300, MT. LAUREL, NJ

NOTE:  
 ALL ACREAGE GIVEN ON THIS MAP  
 DOES NOT INCLUDE ROAD AREAS.  
 NOTE:  
 THIS SHEET HAS BEEN REDRAWN USING COMPUTER  
 AIDED DRAFTING/DESIGN (CAD/D) BASED ON THE MAP  
 PREPARED BY: B. HAROLD WILLS DATED: JAN. 1990

THIS SHEET WAS FORMALLY APPROVED ON MARCH 12, 1985  
 BY IVAN HAFTHOWITZ AND ASSIGNED SERIAL NUMBER 641