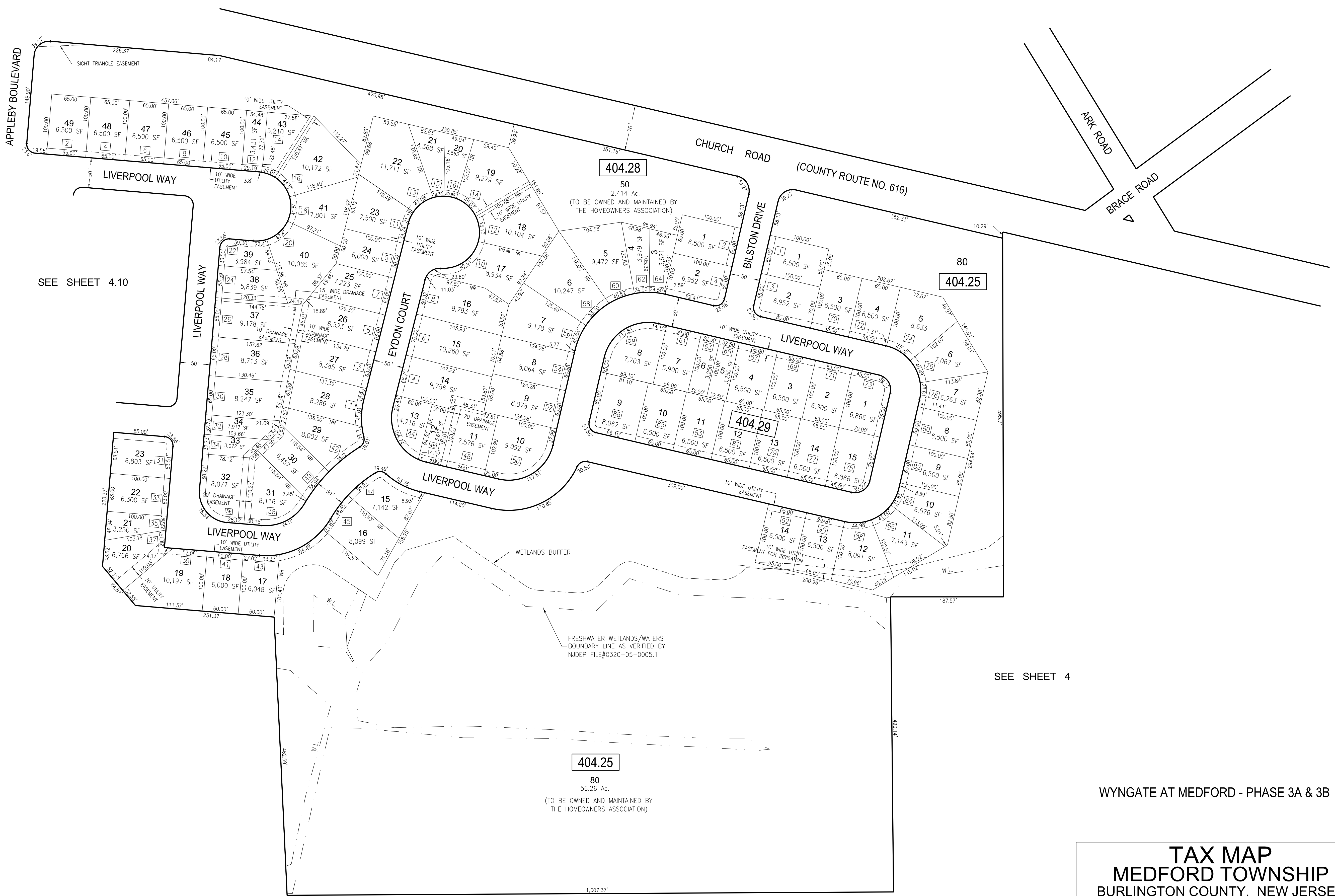
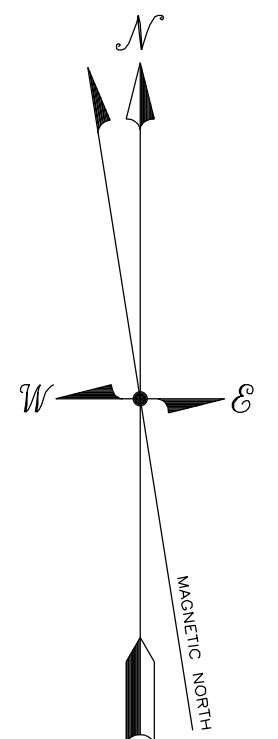


REVISIONS		
DATE	NAME	NO.
9/08/16	CHARLES L. WALTON, JR.	PE&LS#15800



SEE SHEET 4.10

SEE SHEET 4

WYNGATE AT MEDFORD - PHASE 3A & 3B

TAX MAP
MEDFORD TOWNSHIP
 BURLINGTON COUNTY, NEW JERSEY
 SCALE: 1"=80' JANUARY, 2016
 STEVEN C. WOODROW, P.L.S.
 PROFESSIONAL LAND SURVEYOR NJ LIC. #27514
 DANTE GUZZI ENGINEERING ASSOCIATES
 418 STOKES ROAD MEDFORD, NJ 08055
 TO SHOW CONDITIONS AS OF 9/21/16