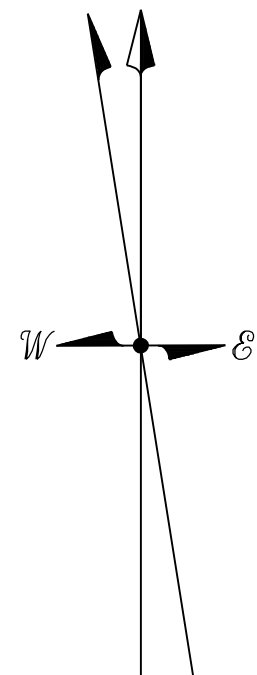
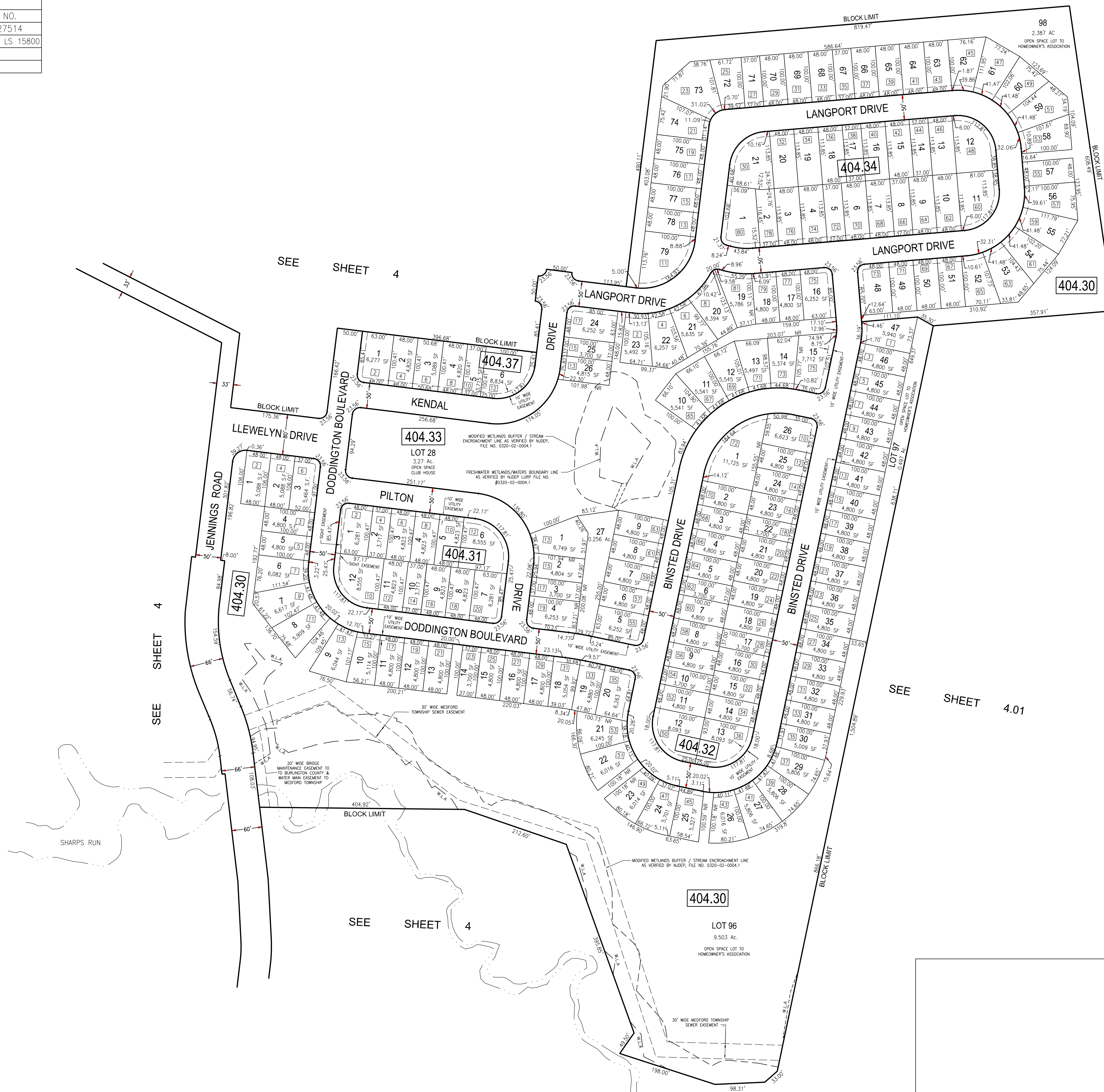


REVISIONS		
DATE	NAME	NO.
01/27/16	STEVEN C. WOODROW	27514
01/09/17	CHARLES L. WALTON JR.	PE & LS 15800



SEE SHEET 4

SEE SHEET 4

SEE SHEET 4

SEE SHEET 4.01

HERITAGE AT MEDFORD
PHASES I, II & III

TAX MAP
MEDFORD TOWNSHIP
 BURLINGTON COUNTY, NEW JERSEY
 SCALE: 1"=100' DECEMBER, 2013
 STEVEN C. WOODROW, P.L.S.
 PROFESSIONAL LAND SURVEYOR NJ LIC. #27514
 DANTE GUZZI ENGINEERING ASSOCIATES
 418 STOKES ROAD MEDFORD, NJ 08055
 TO SHOW CONDITIONS AS OF DECEMBER, 2016

NOTE:
 ALL ACREAGE GIVEN ON THIS MAP
 DOES NOT INCLUDE ROAD AREAS.