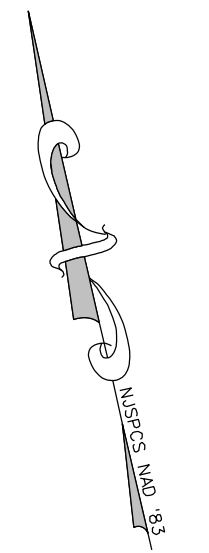
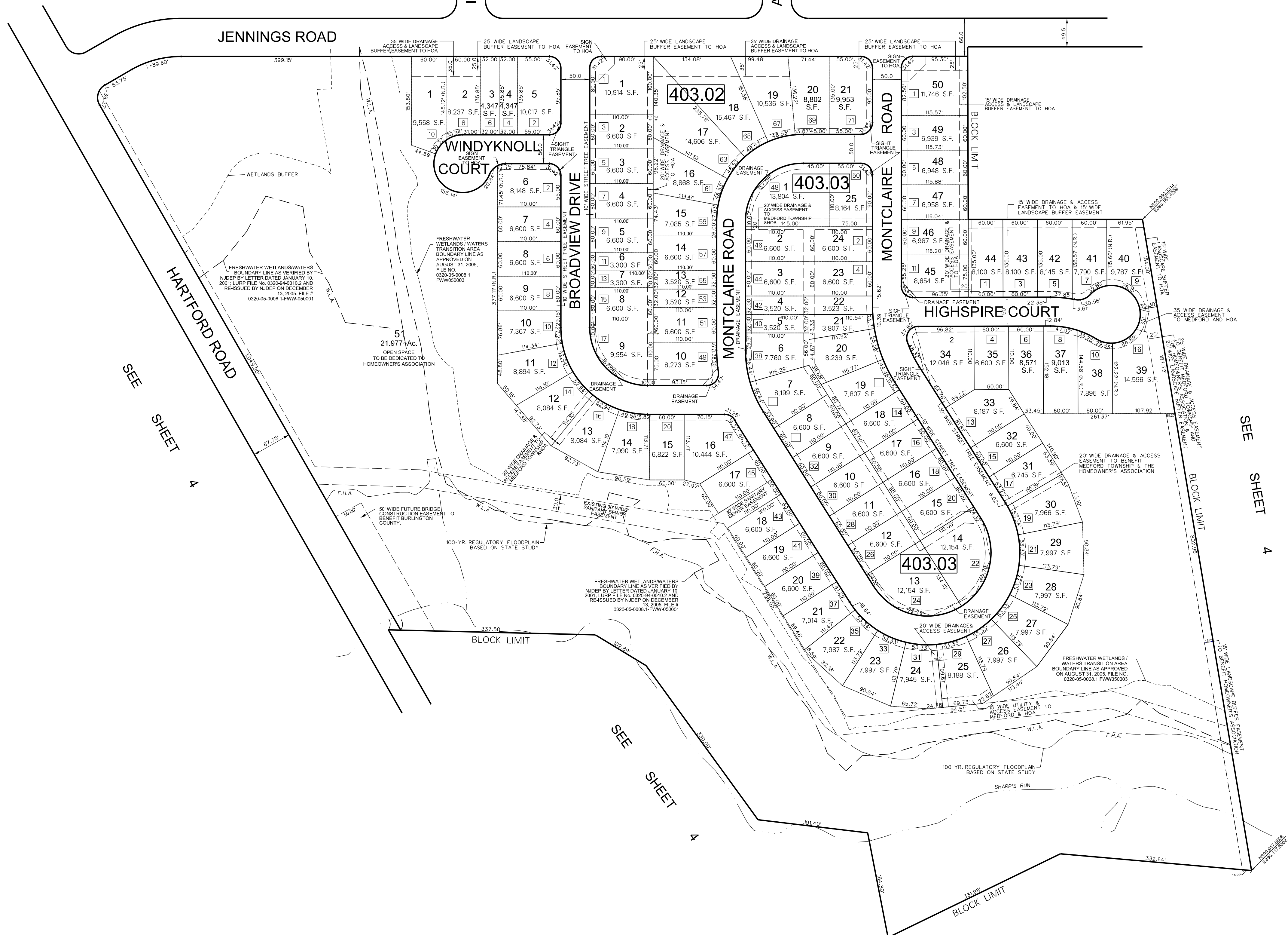


DATE	NAME OF P.L.S.	LICENSE # OF P.L.S.
7/15/09	PATRICK S. VITARELLI	N.J.P.L.S. #27895
1/25/10	PATRICK S. VITARELLI	N.J.P.L.S. #27895
2/22/11	PATRICK S. VITARELLI	N.J.P.L.S. #27895
3/05/12	PATRICK S. VITARELLI	N.J.P.L.S. #27895
12/31/13	STEVEN C. WOODROW	N.J.P.L.S. #27514



SEE SHEET 4.07



SEE SHEET 4

SEE SHEET 4

3 REPRESENTS HOUSE NUMBER

NOTE:
ALL ACREAGE GIVEN ON THIS MAP
DOES NOT INCLUDE ROAD AREAS.

THIS SHEET WAS FORMALLY APPROVED ON MARCH 12, 1985
BY IVAN HAFTHOWITZ AND ASSIGNED SERIAL NUMBER 641

WILDFLOWERS AT MEDFORD
PHASE I & II

TAX MAP
MEDFORD TOWNSHIP
BURLINGTON COUNTY, NEW JERSEY
SCALE: 1"=100' DATE: JULY, 2009
Patrick S. Vitarelli
LICENSED LAND SURVEYOR No. 27895
ENVIRONMENTAL RESOLUTIONS, INC.
525 FELLOWSHIP RD., SUITE 300, MT. LAUREL, NEW JERSEY