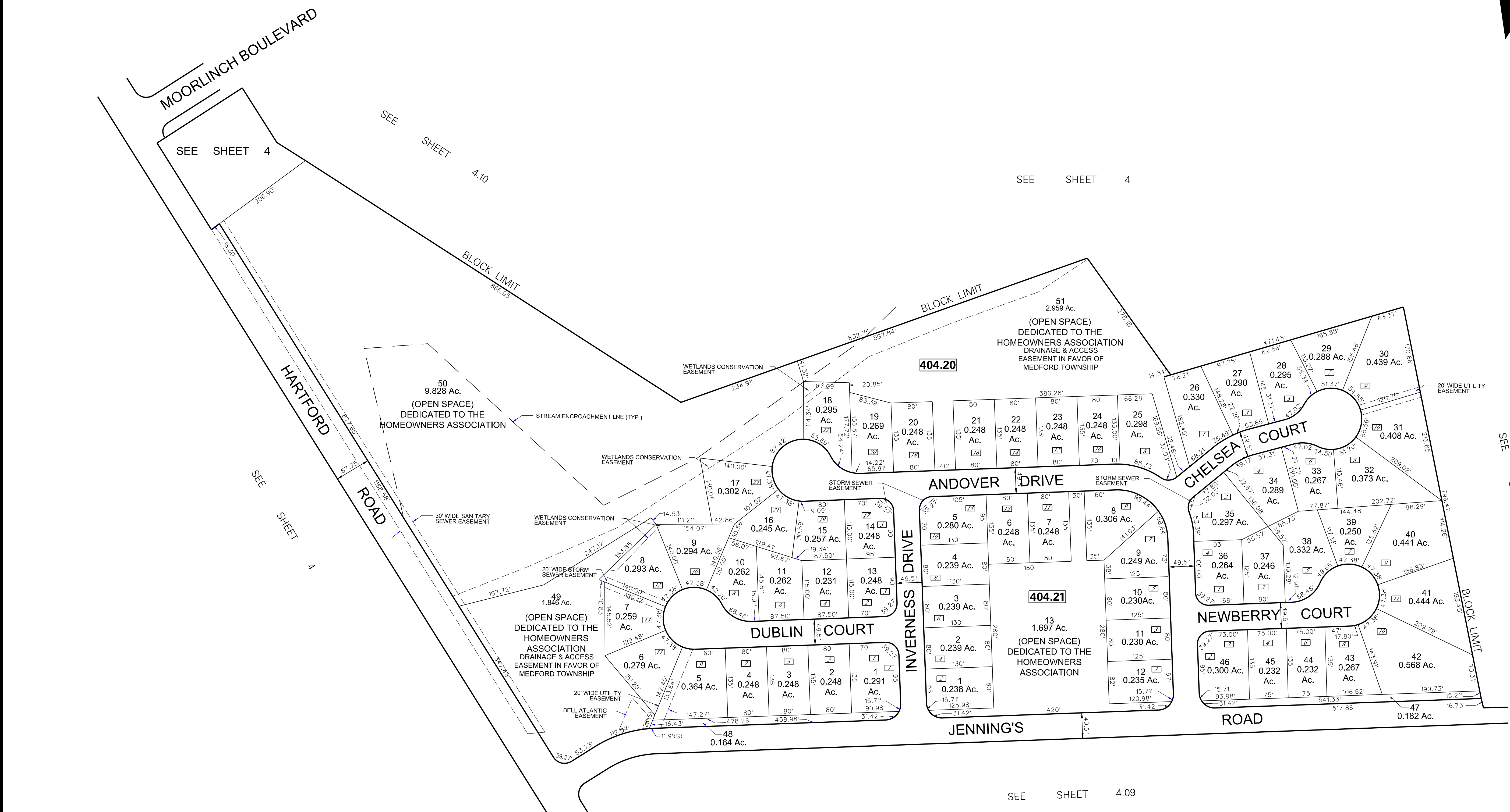


DATE	NAME OF P.L.S.	LICENSE # OF P.L.S.
9/20/08	PATRICK S. VITARELLI	N.J.P.L.S. #27895
7/15/09	PATRICK S. VITARELLI	N.J.P.L.S. #27895
9/09/09	PATRICK S. VITARELLI	N.J.P.L.S. #27895
3/19/15	STEVEN C. WOODROW	N.J.P.L.S. #27514



NOTES:
 1. EASEMENT FOR MAINTENANCE OF UTILITIES WITHIN THE OPEN SPACE AREAS DEDICATED TO MEDFORD TOWNSHIP.
 2. ACCESS, INGRESS AND EGRESS OVER ALL OPEN GRANTED TO THE TOWNSHIP OF MEDFORD FOR MAINTENANCE AND REPAIR OF ALL MUNICIPAL UTILITIES.
 [Symbol] DEVOTES HOUSE NUMBER (TYP.)

NOTE:
 ALL ACREAGE GIVEN ON THIS MAP DOES NOT INCLUDE ROAD AREAS.
 THIS SHEET IS A DIGITIZED COPY OF THE TAX MAP ORIGINALLY PREPARED BY JOHN T. BUTLER. THE ORIGINAL IS ON FILE IN THE OFFICE OF THE TOWNSHIP ENGINEER

THIS SHEET WAS FORMALLY APPROVED ON MARCH 12, 1985 BY IVAN HAFTHOWITZ AND ASSIGNED SERIAL NUMBER 641

THE PLAINS OF MEDFORD SUBDIVISION
TAX MAP
MEDFORD TOWNSHIP
 BURLINGTON COUNTY, NEW JERSEY
 SCALE: 1"=100 DATE: JUL., 1994
JOHN T. BUTLER
 LICENSED LAND SURVEYOR NO. 23938
 MT. LAUREL, NEW JERSEY