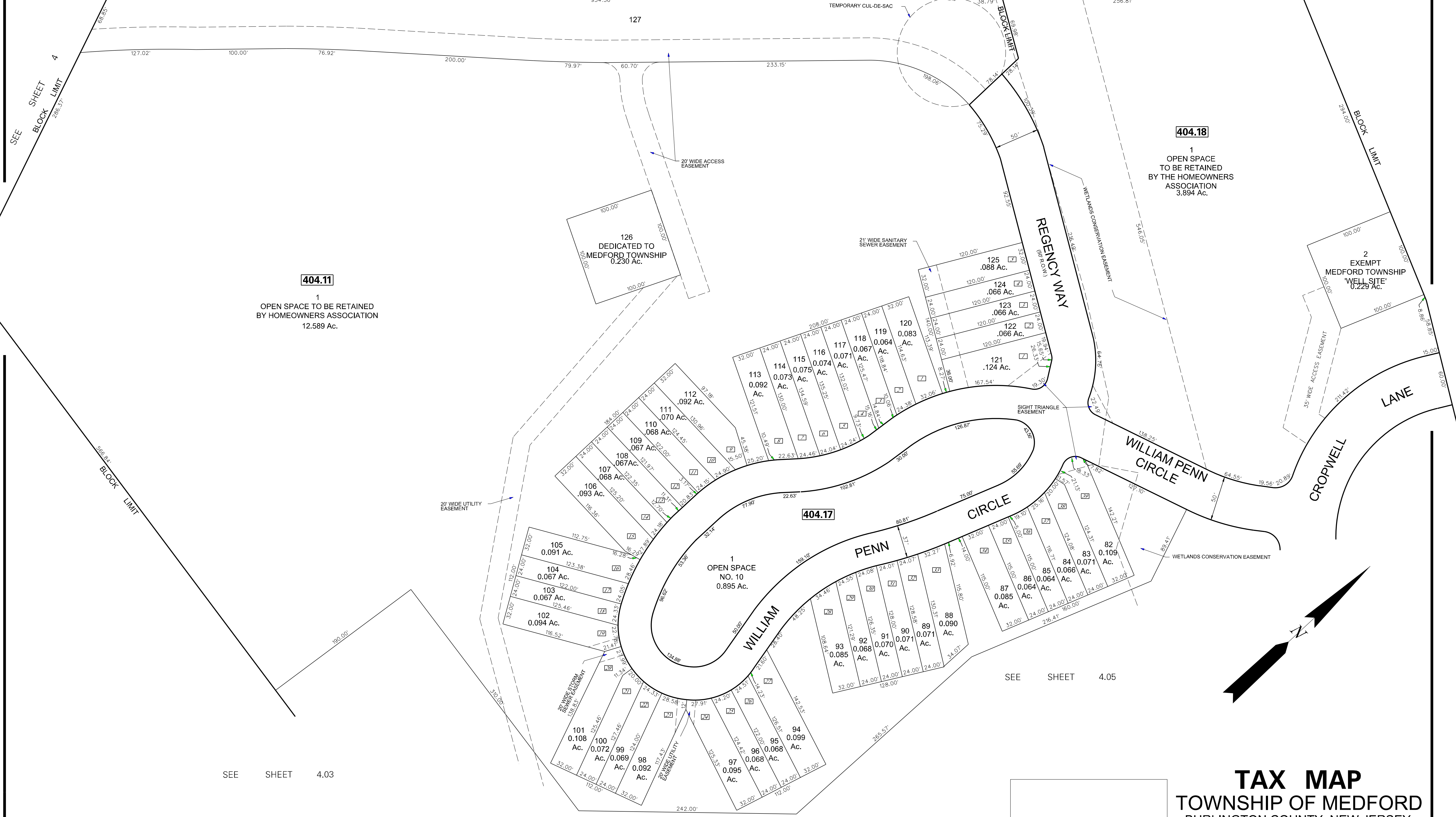


DATE	NAME OF P.L.S.	LICENSE # OF P.L.S.
5/30/06	PATRICK S. VITARELLI	N.J.P.L.S. *27895
4/4/16	CHARLES L. WALTON, JR.	N.J.P.L.S. *15800

SEE SHEET 4

BLOCK LIMIT

BLOCK LIMIT



NOTE:
ALL ACREAGE GIVEN ON THIS MAP DOES NOT INCLUDE ROAD AREAS.

THIS SHEET IS A DIGITIZED COPY OF THE TAX MAP ORIGINALLY PREPARED BY JOHN T. BUTLER THE ORIGINAL IS ON FILE IN THE OFFICE OF THE TOWNSHIP ENGINEER

NOTES:
1. EASEMENT FOR MAINTENANCE OF UTILITIES WITHIN THE OPEN SPACE AREAS DEDICATED TO MEDFORD TOWNSHIP.
2. ACCESS, INGRESS AND EGRESS OVER ALL OPEN GRANTED TO THE TOWNSHIP OF MEDFORD FOR MAINTENANCE AND REPAIR OF ALL MUNICIPAL UTILITIES.

[Symbol] DENOTES HOUSE NUMBER (TYP.)

THIS SHEET WAS FORMALLY APPROVED ON MARCH 12, 1985 BY IVAN HAFTHOWITZ AND ASSIGNED SERIAL NUMBER 641

TAX MAP
TOWNSHIP OF MEDFORD
BURLINGTON COUNTY, NEW JERSEY
SCALE: 1" = 50' DATED JULY 1994
JOHN T. BUTLER
LICENSED LAND SURVEYOR NO. 23938
MT. LAUREL, NEW JERSEY