

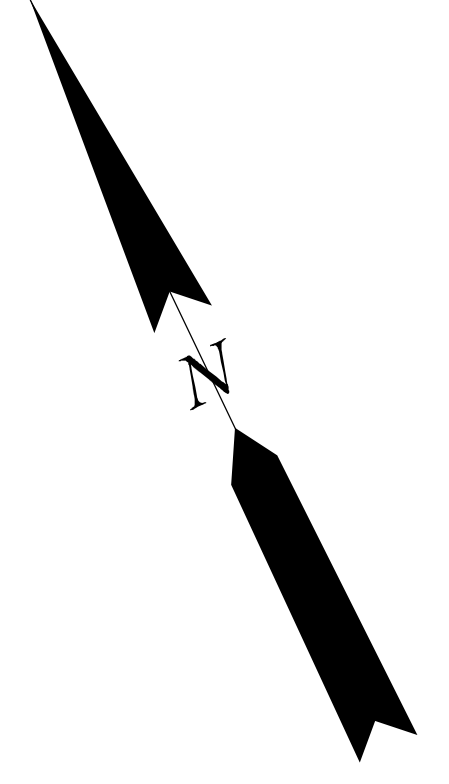
DATE	NAME OF P.L.S.	LICENSE # OF P.L.S.
5/30/06	PATRICK S. VITARELLI	N.J.P.L.S. *27895

SEE SHEET 4

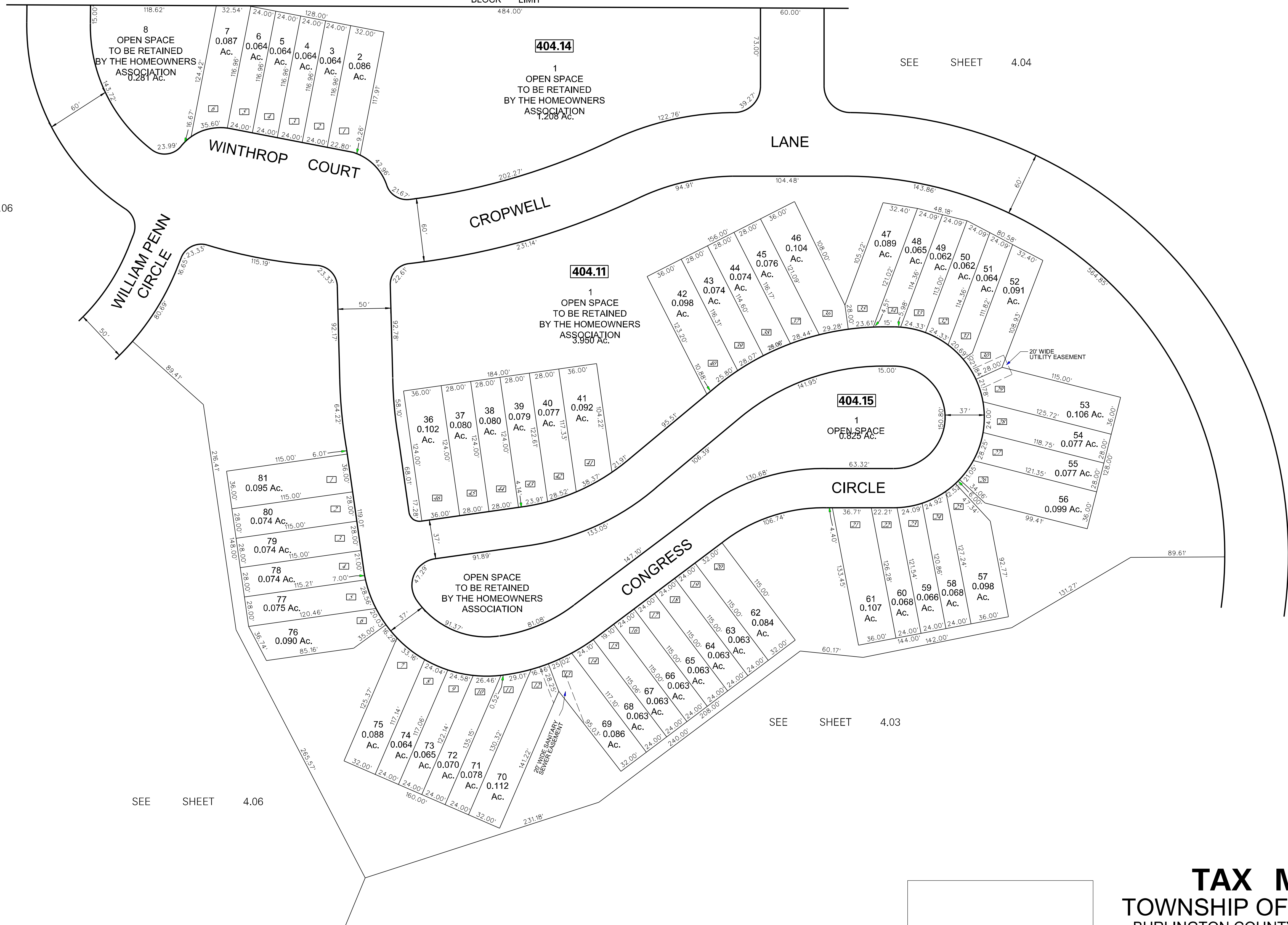
BLOCK LIMIT

404.14
 1
 OPEN SPACE
 TO BE RETAINED
 BY THE HOMEOWNERS
 ASSOCIATION
 1.208 Ac.

SEE SHEET 4.04



SEE SHEET 4.06



NOTES:
 1. EASEMENT FOR MAINTENANCE OF UTILITIES WITHIN THE OPEN SPACE AREAS DEDICATED TO MEDFORD TOWNSHIP.
 2. ACCESS, INGRESS AND EGRESS OVER ALL OPEN GRANTED TO THE TOWNSHIP OF MEDFORD FOR MAINTENANCE AND REPAIR OF ALL MUNICIPAL UTILITIES.

☐ DENOTES HOUSE NUMBER (TYP.)

THIS SHEET WAS FORMALLY APPROVED ON MARCH 12, 1985
 BY IVAN HAFTHOWITZ AND ASSIGNED SERIAL NUMBER 641

TAX MAP
 TOWNSHIP OF MEDFORD
 BURLINGTON COUNTY, NEW JERSEY
 SCALE: 1" = 50' DATED JANUARY 1990
 HARRY O. BATEMAN
 LICENSED LAND SURVEYOR NO. 10123
 MT. LAUREL, NEW JERSEY