

# KEY MAP 1.0

## TAX MAP

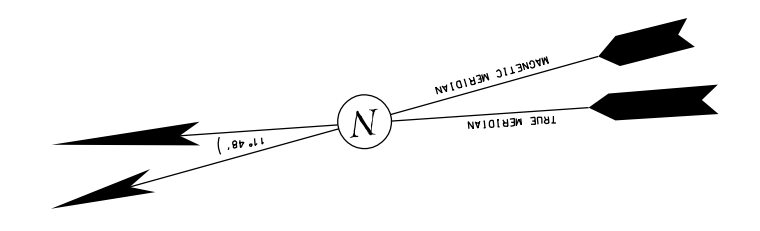
TOWNSHIP OF MEDFORD  
 BURLINGTON COUNTY, NEW JERSEY  
 SCALE: 1"=800' DATE: JAN. 1959

I HEREBY CERTIFY THAT THIS MAP HAS BEEN REVISED  
 UNDER MY IMMEDIATE SUPERVISION, AND COMPLIES  
 WITH THE LAWS OF THE STATE OF NEW JERSEY

PATRICK S. VITARELLI N.J.L.S. 27895

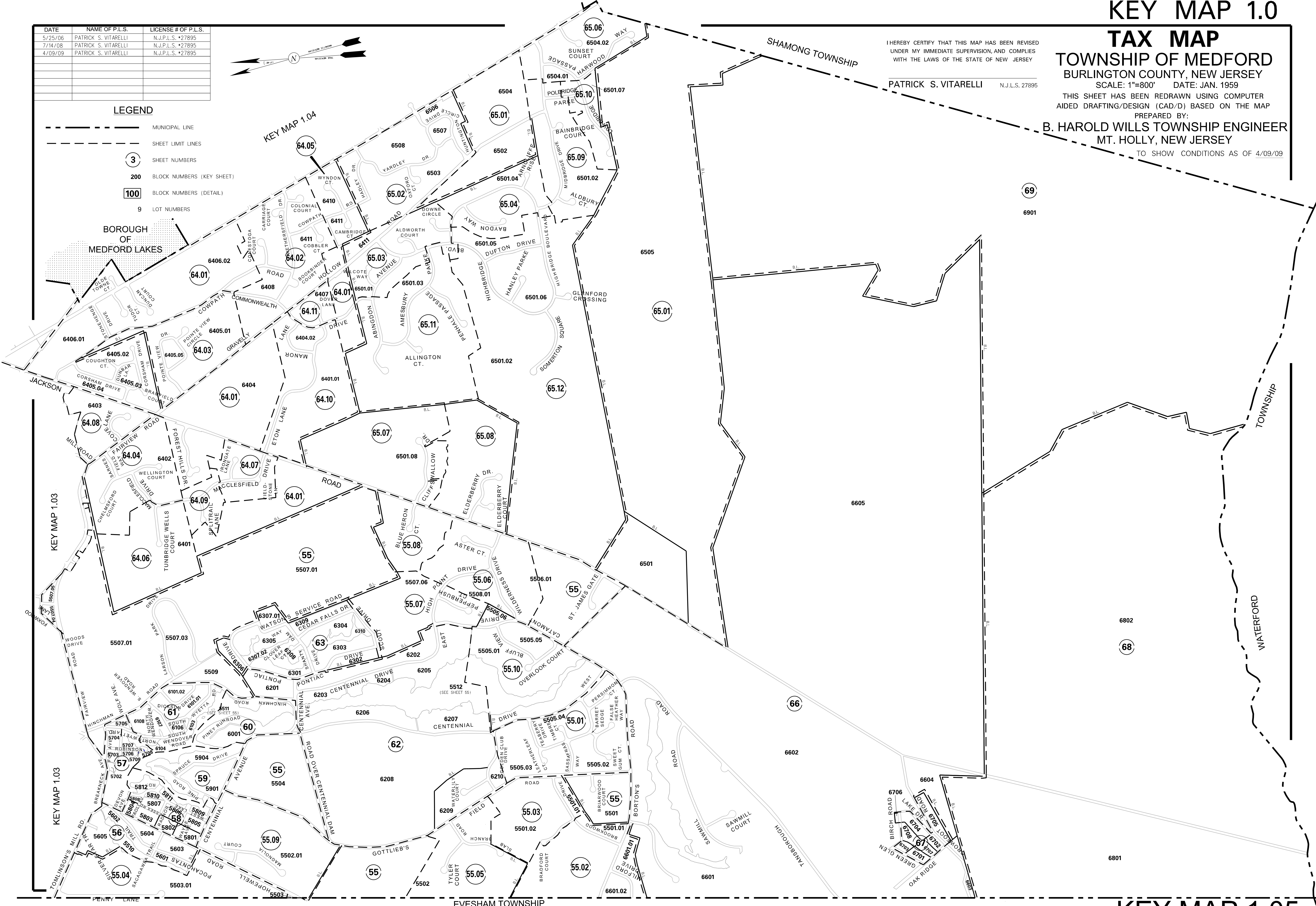
THIS SHEET HAS BEEN REDRAWN USING COMPUTER  
 AIDED DRAFTING/DESIGN (CAD/D) BASED ON THE MAP  
 PREPARED BY:  
**B. HAROLD WILLS TOWNSHIP ENGINEER**  
 MT. HOLLY, NEW JERSEY  
 TO SHOW CONDITIONS AS OF 4/09/09

DATE	NAME OF P.L.S.	LICENSE # OF P.L.S.
5/25/06	PATRICK S. VITARELLI	N.J.P.L.S. #27895
7/14/08	PATRICK S. VITARELLI	N.J.P.L.S. #27895
4/09/09	PATRICK S. VITARELLI	N.J.P.L.S. #27895



### LEGEND

- MUNICIPAL LINE
- SHEET LIMIT LINES
- SHEET NUMBERS
- BLOCK NUMBERS (KEY SHEET)
- BLOCK NUMBERS (DETAIL)
- LOT NUMBERS



# KEY MAP 1.05