

MEDFORD TOWNSHIP OPEN SPACE & RECREATION

GOALS & POLICIES



- Preserve scenic vistas and wildlife habitat
- Protect developed property from the hazards of flooding and fire
- Promote agricultural sustainability and opportunity
- Provide outdoor recreation and enjoyment of the natural environment
- Develop physical connections between parks, facilities, and neighborhoods

WHY THE PLAN?



A NJDEP Green Acres Approved Open Space Recreation Plan (OSRP/ Plan) with an open space tax, makes Medford eligible for NJ Green Acres funding

- The Plan is Medford Township's expression of a vision for open space and recreation
- Provides a comprehensive guide for protection and resource preservation
- Provides recreation opportunities
- Open space enhances quality of life & serves a public need

ACTION PLAN



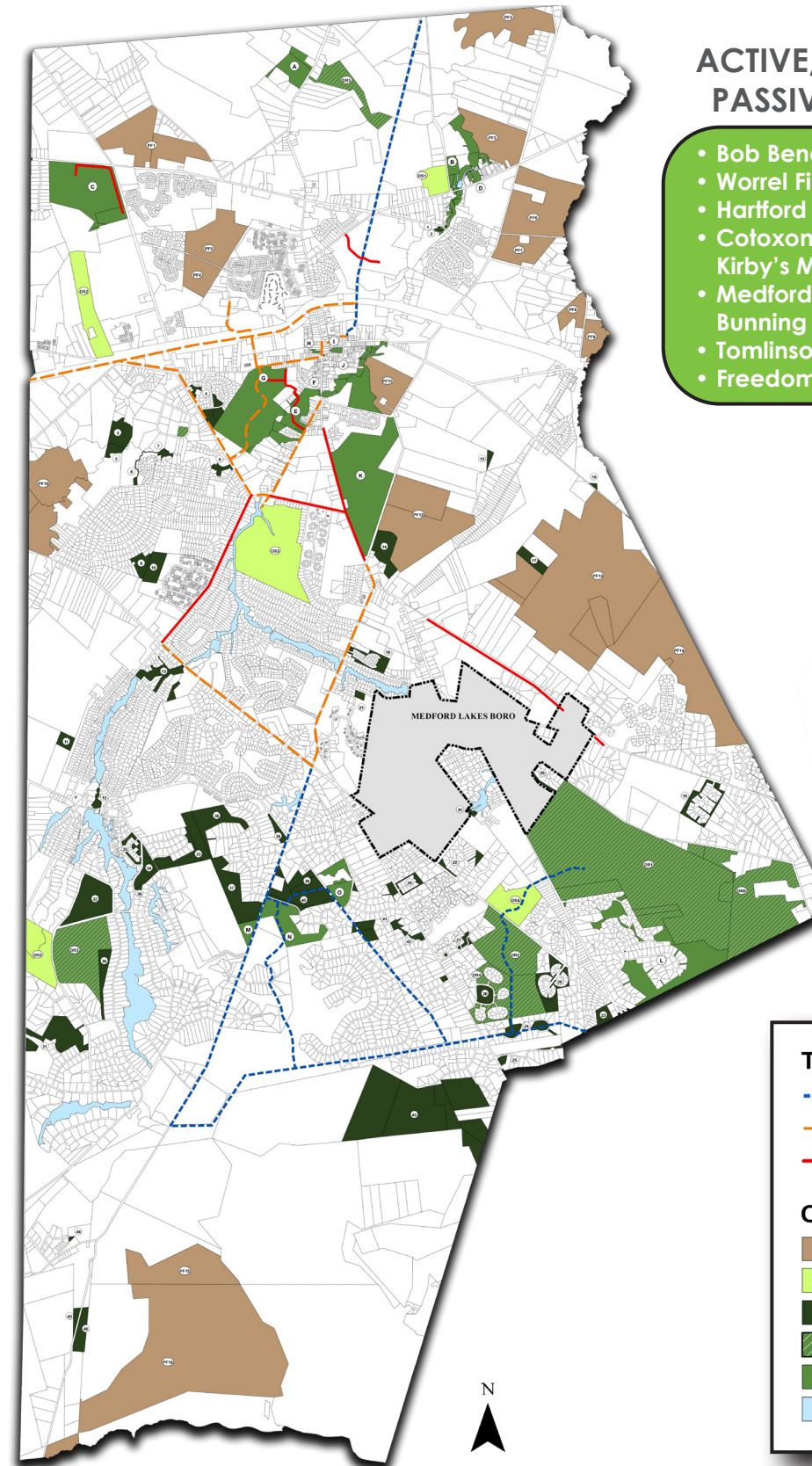
- Seek resources along greenbelts to protect water quality
- Include bikeways and pedestrian paths on street resurfacing and improvement plans
- No changes are proposed to the land development regulations
- Maintenance and management of facilities evaluated as part of the Capital Improvement Program
- Develop standards for trails, paths, furnishings, and wayfinding signs, enhancing community identity
- Participate with the State & County to facilitate preservation and encourage cluster development, agriculture, and conservation easements
- Obtain easements to the abandoned PA Rail line for regional trails

HISTORICAL INFLUENCE



- State, County, Municipality, and Private conservancy groups have preserved and protected greenbelt resources adjacent to stream corridors throughout the community
- Implemented cluster development since 1992, where at least 30% of developed land is preserved as open space and half of that total is required to be uplands

MEDFORD TOWNSHIP OPEN SPACE (ROSI) MAP:



ACTIVE, HISTORIC RESOURCE, AND PASSIVE RECREATION FACILITIES:

- Bob Bende Park
- Worrel Field
- Hartford Crossing
- Cotoxon Park/ Kirby's Mill
- Medford Park/ Bunning Field
- Tomlinson Park
- Freedom Park
- Medford Village Park
- Still Park
- Rancocas Creek Park
- Cow Pointe
- Headwater Park
- Lakeside Fields
- Lambeth Fields/ Eton Park
- Bob Meyer Park

OPEN SPACE FACTS:

- 25,473.4 acres of land area
- ~45% of the land area or 11,397 acres is open space, held for active, passive, and conservation purposes
- Over 700 acres of active public recreation area, equal to 30 acres of active recreation per 1,000 residents

Trail Legend

- PROPOSED REGIONAL TRAIL
- PROPOSED BIKE PATHS/LANES
- EXISTING BIKE PATHS/LANES

Open Space Legend

- Preserved Farmland
- Proposed Open Space
- ROSI Conservation
- ROSI Development Restriction
- ROSI Recreation
- Water

Full Map available on Medford TWP Website:
<https://www.medfordtownship.com/planningboard>